

ELEV 15

NZGS

TOWER: 127.3 118.2

ATIS: 126.4

GISBORNE

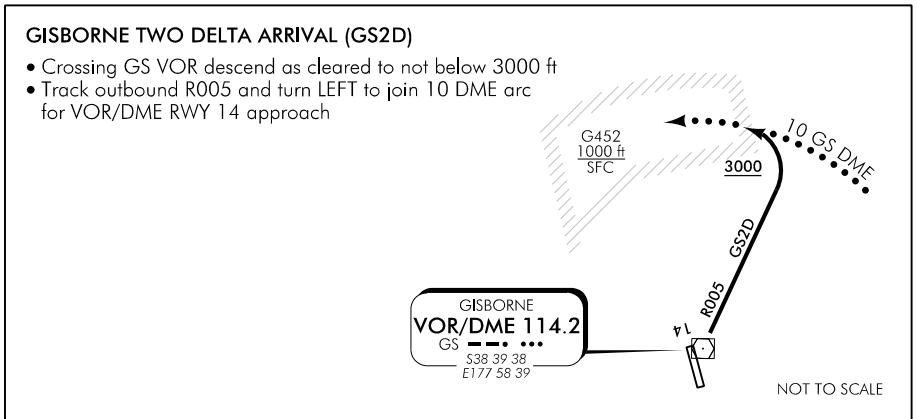
ARRIVAL/DEPARTURE

UNATTENDED: 127.3

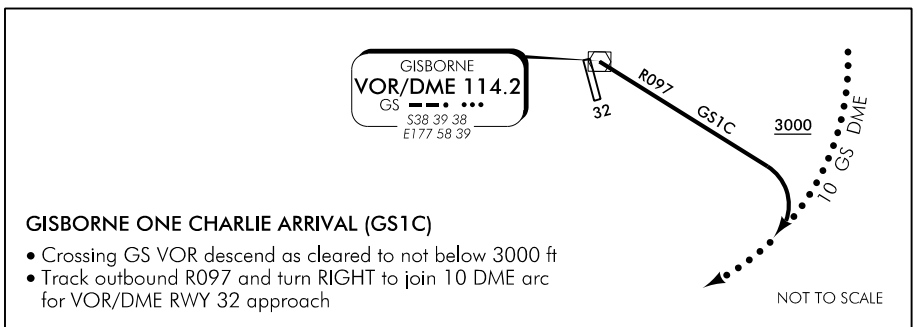
Outside ATC hours of service

- Use 127.3 MHz and unattended aerodrome RTF procedures.
- Arriving aircraft report arrival to Napier Tower 125.6 MHz, or outside Napier TWR hours Christchurch Information 125.6 MHz or 0800 626 756 (landline users only) or 0900 62 675 (cellphone users).
- Departing aircraft contact Napier Tower 125.6 MHz, or outside Napier TWR hours Christchurch Information 125.6 MHz or 0800 626 756 (landline users only) or 0900 62 675 (cellphone users), for clearance and traffic information prior to entering IMC or controlled airspace.

ARRIVAL RWY 14



ARRIVAL RWY 32



Departure Procedures

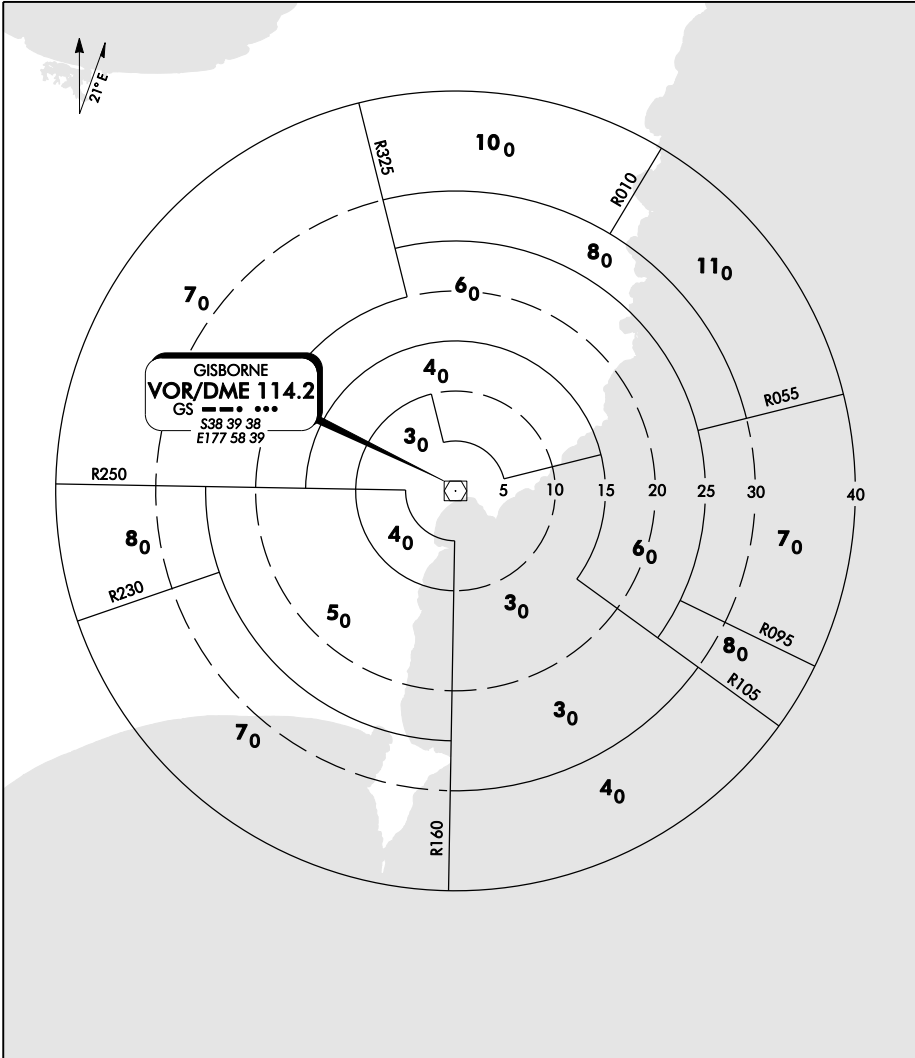
Refer Gisborne SIDs.

GSARRDEF-G

Changes from 6 FEB 14: G452 Ormond added.

GISBORNE

VOR/DME MRA SECTORS (VORSEC)



Changes from 4 SEP 03: Republished.

Effective: 10 FEB 11