

ELEV 15

CAT A,B,C

# GISBORNE

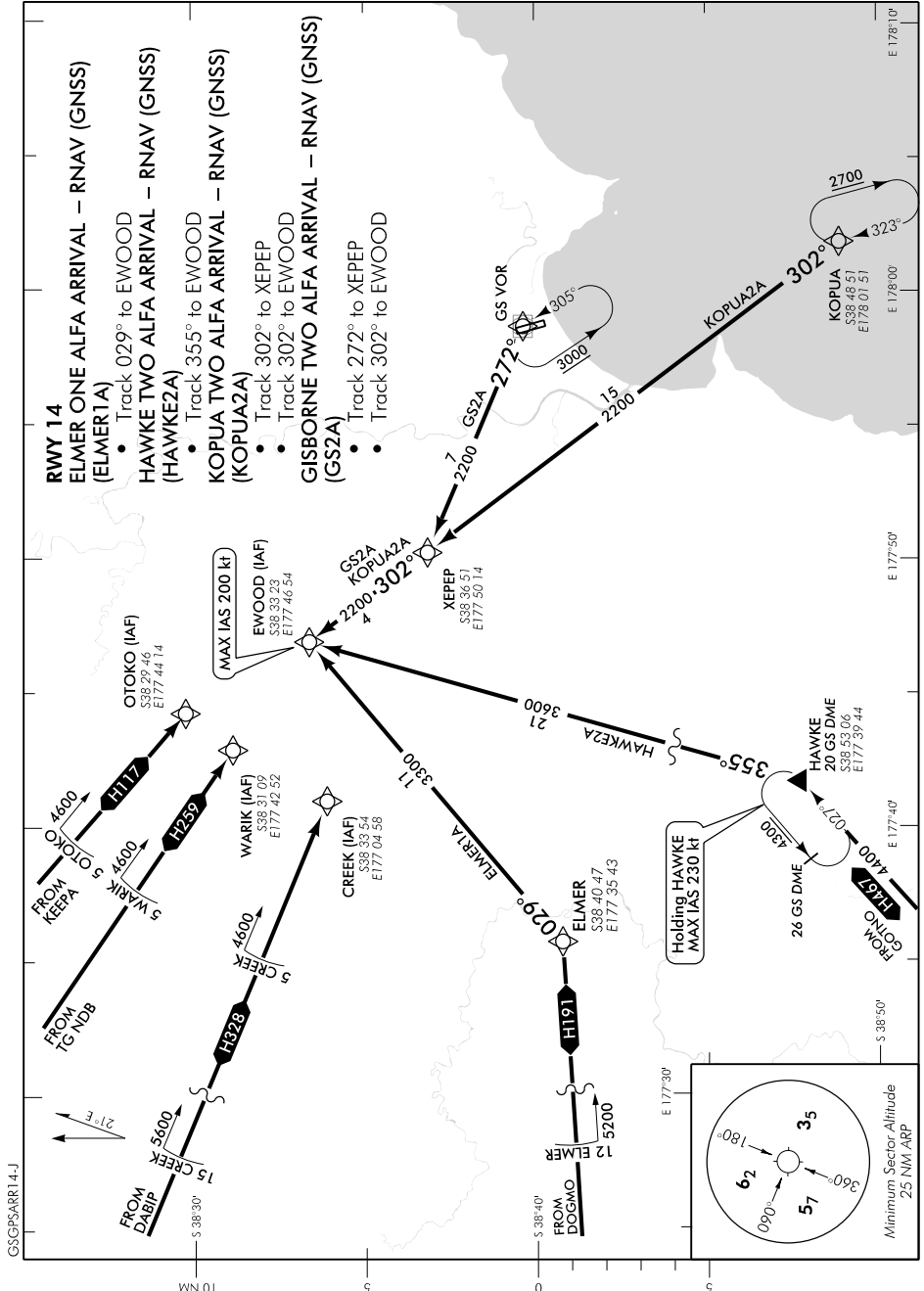
NZGS

## RNAV (GNSS) ARRIVAL RWY 14

TOWER: 127.3 118.2

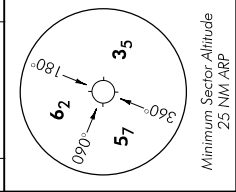
ATIS: 126.4

UNATTENDED: 127.3



Changes from 10 NOV 16: H191 arrival now via DOGMO.

Effective: 14 SEP 17



ELEV 15

CAT A,B,C

NZGS

# GISBORNE RNAV (GNSS) ARRIVAL RWY 32

TOWER: 127.3 118.2

ATIS: 126.4

UNATTENDED: 127.3

