

ELEV 15

CAT A,B,C

GISBORNE

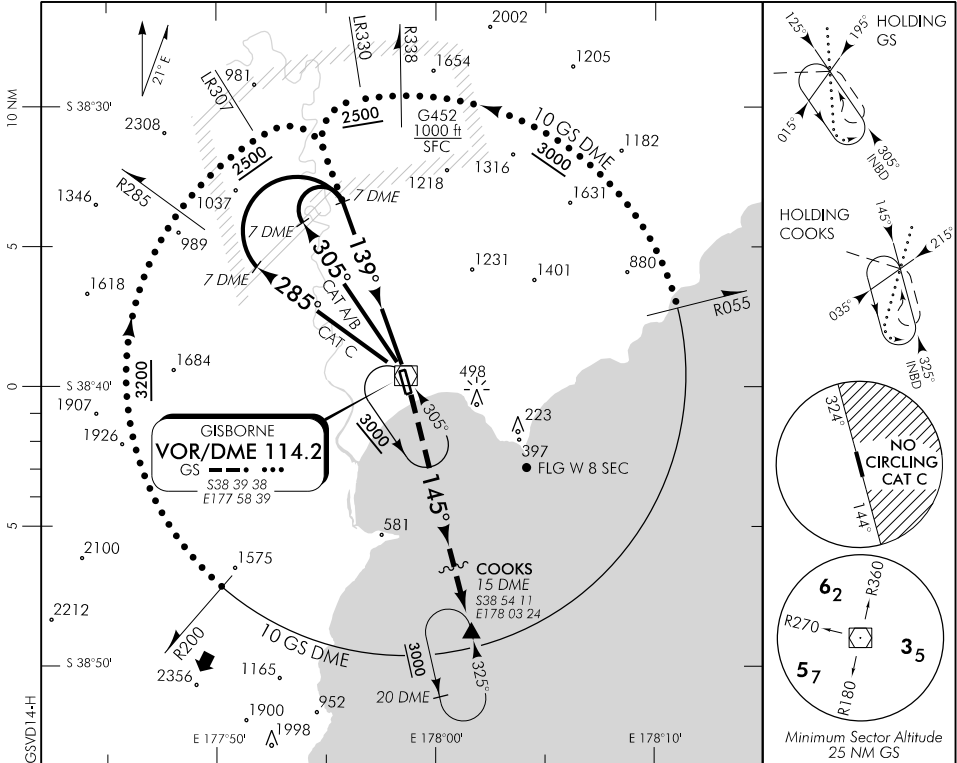
RWY 14 THR ELEV 12

VOR/DME RWY 14

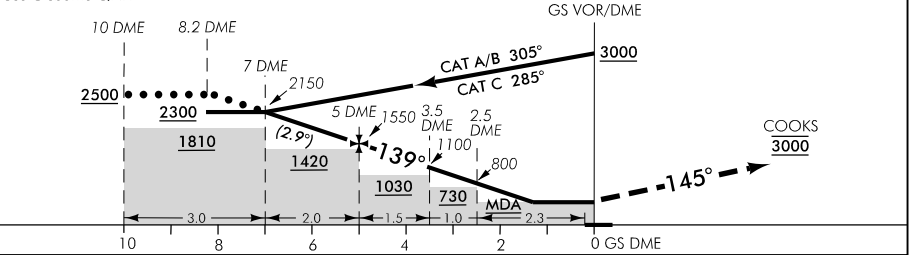
TOWER: 127.3 118.2

ATIS: 126.4

UNATTENDED: 127.3



Use Gisborne QNH



MISSED APCH: Track 145° to COOKS 3000

GS DME DIST	10	9	8	7	6	5	4	3	2	1.3	MAPH VOR
Advisory Altitude 5%	3050	2750	2450	2150	1850	1550	1250	950	650	MDA	MDA
Category	A			B			C			D	
VOR/DME	440(425) - 1600			440(425) - 2400							
Circling (West)	500(485) - 1900			500(485) - 2800			860(845) - 3700			NA	
Circling (East)				890(875) - 2800			NA				

Effective: 12 NOV 15

Changes from 06 FEB 14: G452 Ormond added.

