

ELEV 15

CAT A,B,C

GISBORNE

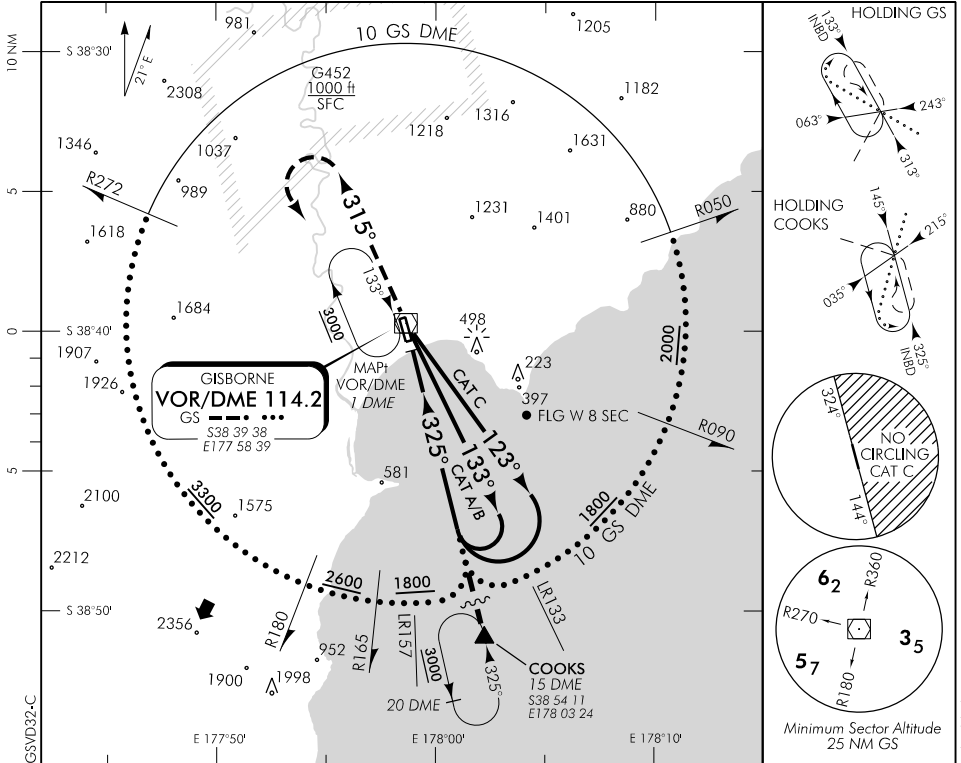
RWY 32 THR ELEV 15

VOR/DME RWY 32

TOWER: 127.3 118.2

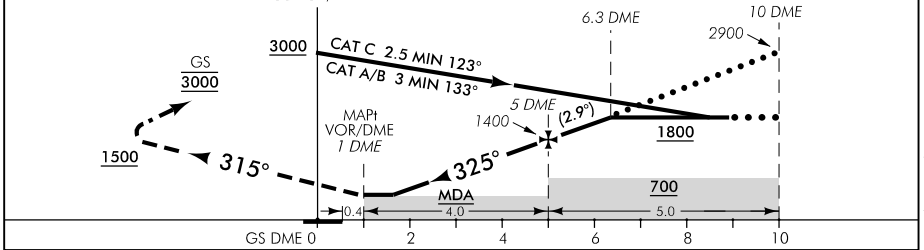
ATIS: 126.4

UNATTENDED: 127.3



Use Gisborne QNH

GS VOR/DME



MISSED APCH: Track 315° to 1500, turn LEFT, direct to GS VOR 3000

GS DME DIST	MAPt 1	1.7	2	3	4	5	6	7	8	9	10
Advisory Altitude 5%	MDA	MDA	500	800	1100	1400	1700	2000	2300	2600	2900
Category	A		B			C			D		
VOR/DME	400(385)-1600		400(385)-2000			400(385)-2000			NA		
Circling (West)	500(485)-1900		500(485)-2800			860(845)-3700			NA		
Circling (East)	500(485)-1900		890(875)-2800			NA			NA		

Effective: 12 NOV 15

Changes from 6 FEB 14: G452 Ormond added.

ELEV 15

CAT A,B,C

GISBORNE

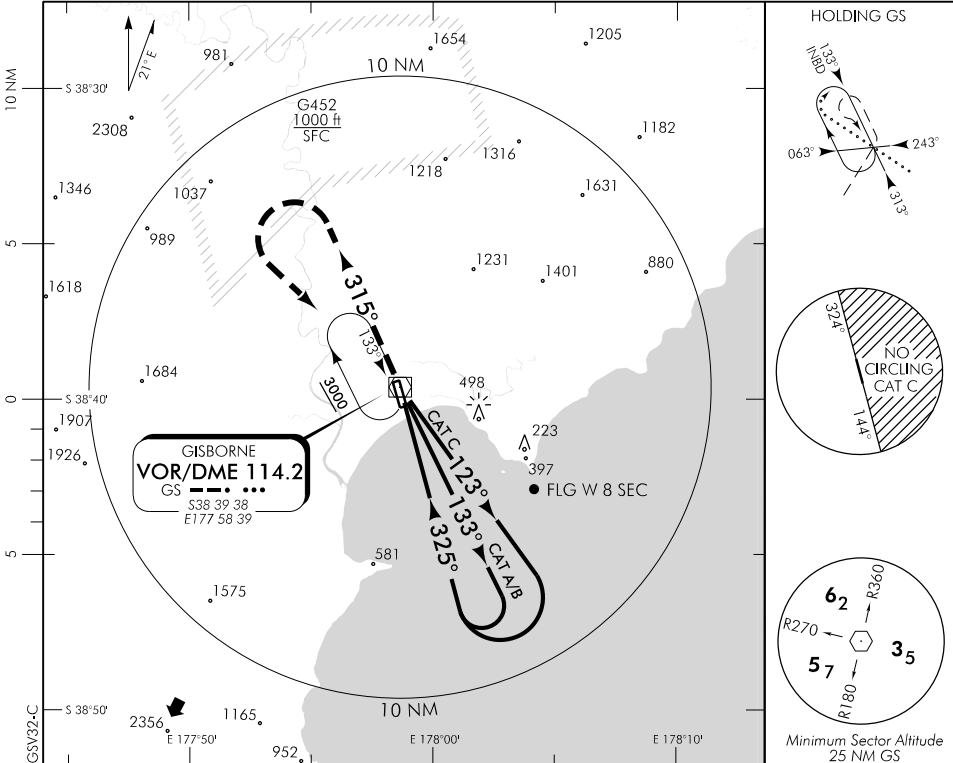
RWY 32 THR ELEV 15

VOR RWY 32

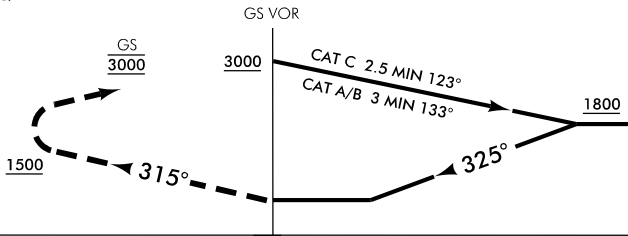
TOWER: 127.3 118.2

ATIS: 126.4

UNATTENDED: 127.3



Use Gisborne QNH



MISSED APCH: Track 315° to 1500, turn LEFT direct to GS VOR 3000

Category	A	B	C	D
VOR	450(435) – 1600		450(435) – 2400	
Circling (West)	500(485) – 1900	500(485) – 2800	860(845) – 3700	NA
Circling (East)		890(875) – 2800	NA	

Changes from 6 FEB 14: G452 Ormond added.

Effective: 12 NOV 15