

ELEV 15

CAT A,B,C

GISBORNE

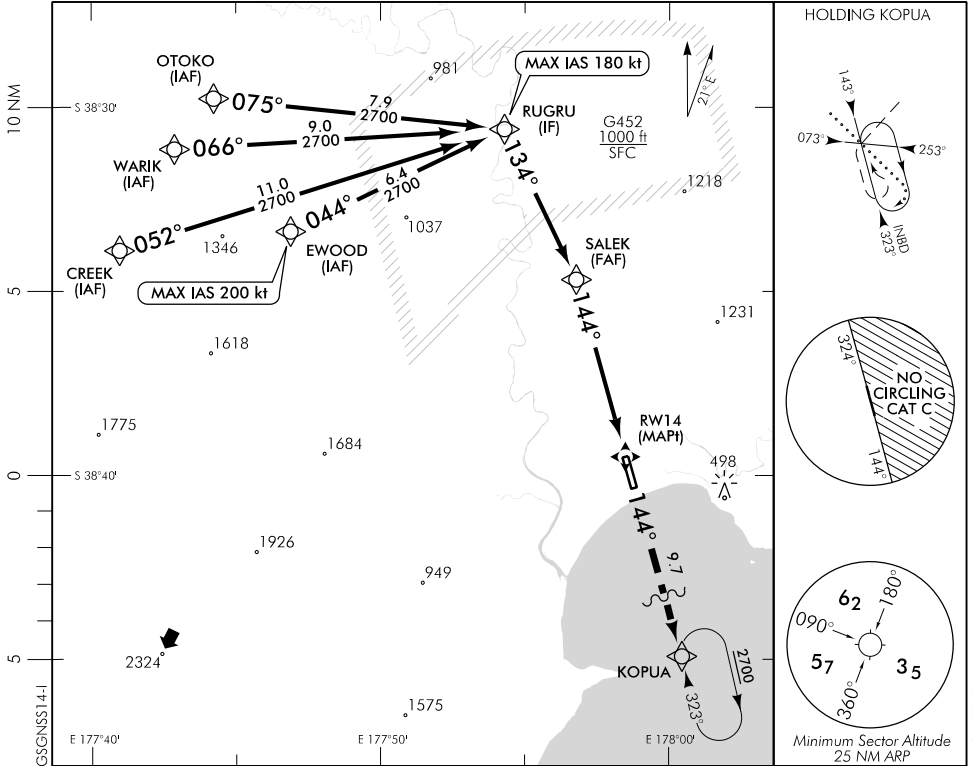
RWY 14 THR ELEV 12

RNAV (GNSS) RWY 14

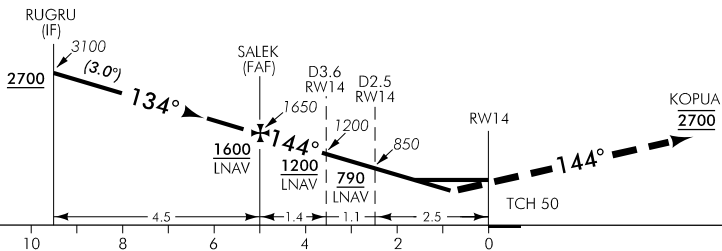
TOWER: 127.3 118.2

ATIS: 126.4

UNATTENDED: 127.3



Use Gisborne QNH



MISSED APCH: Track 144° to KOPIUA 2700

DISTANCE to WPT	RUGRU	4	3	2	1	SALEK	4	3	2	1.2	1	RW14
Advisory Altitude 3°	3100	2930	2610	2290	1970	1650	1340	1020	700	MDA	DA	DA/MDA
Category	A			B			C			D		
LNAV/VNAV *	370(358) - 1600						370(358) - 2000			NA		
LNAV	440(425) - 1600						440(425) - 2400					
Circling (West)	500(485) - 1900			500(485) - 2800			860(845) - 3700					
Circling (East)				890(875) - 2800			NA					

* Valid to AD temperature -5°C. Use of remote QNH NA.

Effective: 12 NOV 15

