

ELEV 15

NZGS

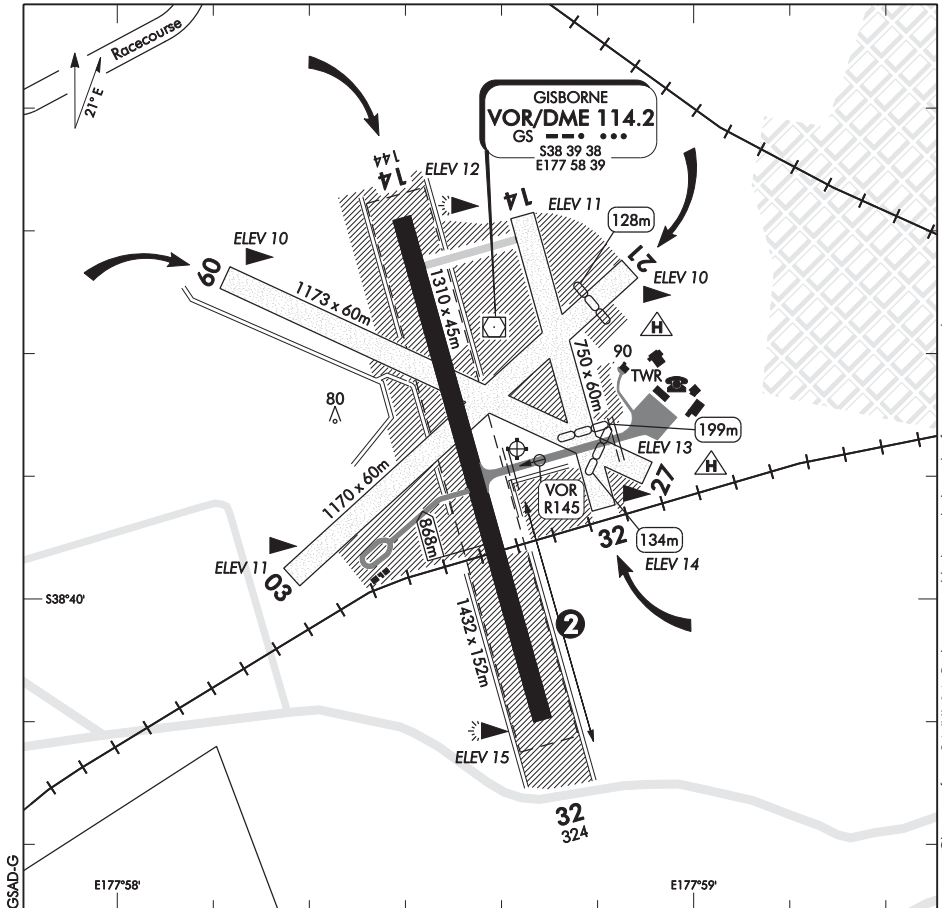
TOWER: 127.3 118.2

ATIS: 126.4

GISBORNE

AERODROME (1)

UNATTENDED: 127.3



1. Circuit: RWY 32, Grass RWY 03, 14, 27 — Left hand
RWY 14, Grass RWY 09, 21, 32 — Right hand
2. Aircraft landing on Grass RWY 32 or Grass RWY 27 are to exercise caution if trains are holding on the city side of RWY 14/32.
3. Same direction simultaneous operations on parallel paved and grass runways 14/32 permitted.
4. ESWL for grass taxiways is 5700 kg.
5. **CAUTION:** Bird hazard. Birds continually present.
6. **CAUTION:** Sea breezes rise slowly during the morning and in NW conditions are often unpredictable and intermittent. Threshold windsocks can indicate wind direction up to 180° different to each other, and the wind reported from the anemometer (located SW of RWY 14/32) can indicate up to 90° different to either windsock.
7. Extensive lucerne harvesting takes place six times per year, men and machines present on all grass areas except grass runways.

(continued)

S 38 39 48 E 177 58 42

Effective: 13 NOV 14

© Civil Aviation Authority

GISBORNE

AERODROME (1)

ELEV 15

NZGS

**GISBORNE
AERODROME (2)**

8. Model aircraft flying takes place most Sunday mornings, up to 500 ft AGL. Low level circuits for RWY 14/32 or Grass RWY 09/27 will not be approved during model operations.
9. Hot refuelling of helicopters on the scheduled aircraft apron is prohibited.
10. Nearest public phone (cardphone) available within terminal building during hours of scheduled air transport operations.