

ELEV 15

CAT A,B,C

NZGS

GISBORNE

RNAV (GNSS) SID RWY 32

TOWER: 127.3 118.2

ATIS: 126.4

UNATTENDED: 127.3

ALL DEPARTURES
 Note 1. Minimum net climb gradient 3.3% (200 ft/NM) unless higher stated

RWY 32
NODE ONE DEPARTURE – RNAV (GNSS) (NODEX1)
 • Track 324° to NODEX (fly-over)

TRANSITIONS:

OTOKO
 MNM net climb gradient 4.3% (270 ft/NM) to 4300 ft
 Airspace containment – MNM net climb gradient 7.0% (430 ft/NM) to 6000 ft
 – From NODEX turn LEFT, track 283° to OTOKO

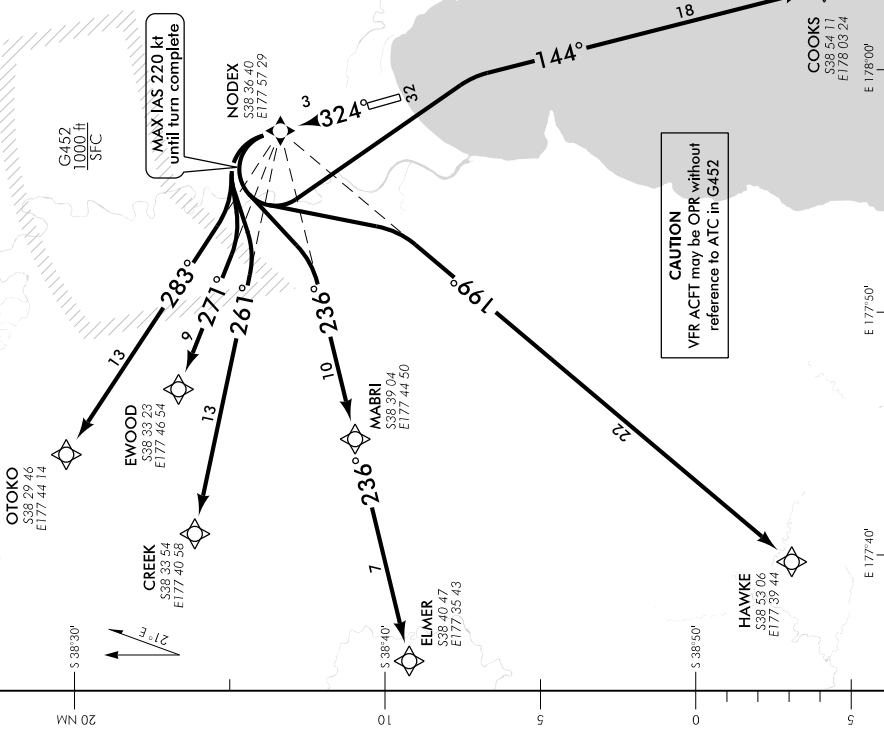
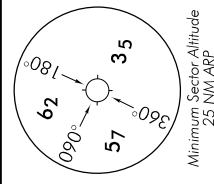
EWOOD
 MNM net climb gradient 4.3% (270 ft/NM) to 4300 ft
 Airspace containment – MNM net climb gradient 6.9% (420 ft/NM) to 4000 ft
 – From NODEX turn LEFT, track 271° to EWOOD

CREEK
 MNM net climb gradient 4.3% (270 ft/NM) to 4300 ft
 Airspace containment – MNM net climb gradient 7.1% (440 ft/NM) to 4000 ft
 – From NODEX turn LEFT, track 261° to CREEK

ELMER
 MNM net climb gradient 4.3% (270 ft/NM) to 4300 ft
 Airspace containment – MNM net climb gradient 7.2% (440 ft/NM) to 4000 ft
 – From NODEX turn LEFT, track 236° via MABRI to ELMER, MAX IAS 220 kt until turn complete

HAWKE
 MNM net climb gradient 4.3% (270 ft/NM) to 4300 ft
 Airspace containment – MNM net climb gradient 6.7% (410 ft/NM) to 4000 ft
 – From NODEX turn LEFT, track 199° to HAWKE, MAX IAS 220 kt until turn complete

COOKS
 MNM net climb gradient 4.3% (270 ft/NM) to 2400 ft
 – From NODEX turn LEFT, track 144° to COOKS, MAX IAS 220 kt until turn complete



GSRNAV SID32-A

New chart.

Effective: 12 NOV 15