

ELEV 0

CAT H

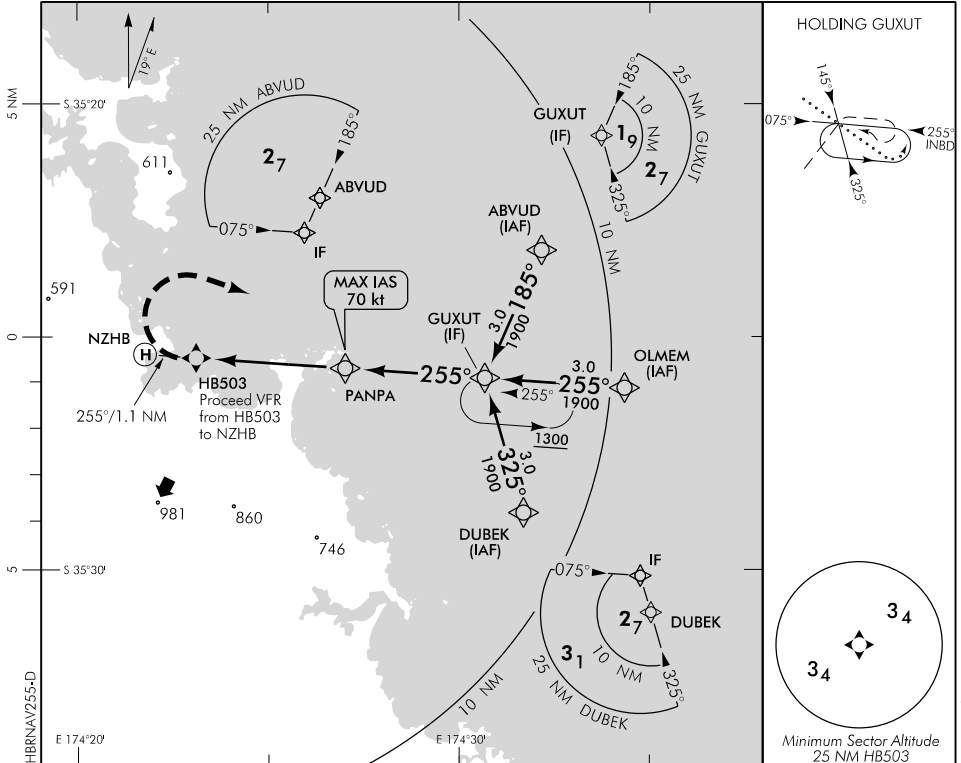
HELENA BAY

NZHB

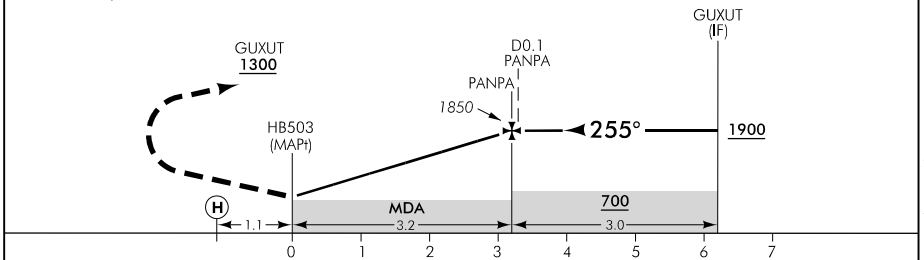
RNAV (GNSS) 255

CHRISTCHURCH INFORMATION: 124.9

UNATTENDED: 118.6



Use Helena Bay QNH.



MISSED APCH: MAX IAS 70 kt until turn complete. Turn RIGHT direct to GUXUT 1300

DISTANCE to WPT	HB503	1	2	3	PANPA	1	2	GUXUT
Advisory Altitude 6.5%	MDA	1000	1400	1800	1850	2250	2650	3050
Category	H							
LNAV	610(610) – 1500							

FOR HELETRANZ APPROVED OPERATORS ONLY

Effective: 1 FEB 18

Changes from 10 NOV 16: Procedure reviewed.

ELEV 0

CAT H

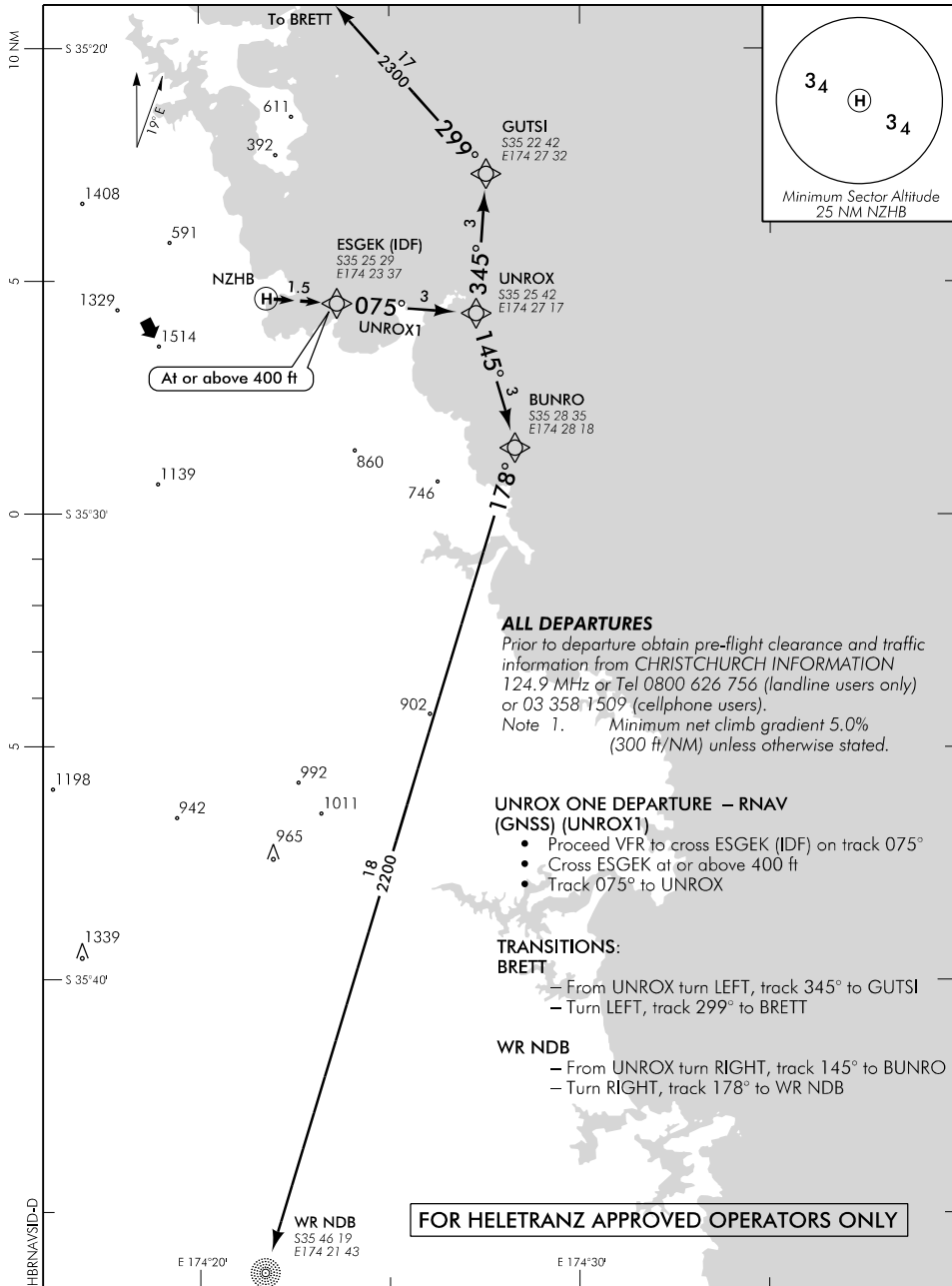
NZHB

HELENA BAY

RNAV (GNSS) SID

CHRISTCHURCH INFORMATION: 124.9

UNATTENDED: 118.6



ALL DEPARTURES

Prior to departure obtain pre-flight clearance and traffic information from CHRISTCHURCH INFORMATION 124.9 MHz or Tel 0800 626 756 (landline users only) or 03 358 1509 (cellphone users).

Note 1. Minimum net climb gradient 5.0% (300 ft/NM) unless otherwise stated.

UNROX ONE DEPARTURE – RNAV (GNSS) (UNROX1)

- Proceed VFR to cross ESGEK (IDF) on track 075°
- Cross ESGEK at or above 400 ft
- Track 075° to UNROX

TRANSITIONS:

BRETT

- From UNROX turn LEFT, track 345° to GUTSI
- Turn LEFT, track 299° to BRETT

WR NDB

- From UNROX turn RIGHT, track 145° to BUNRO
- Turn RIGHT, track 178° to WR NDB

FOR HELETRANZ APPROVED OPERATORS ONLY

Changes from 10 NOV 16 - Procedure reviewed.