

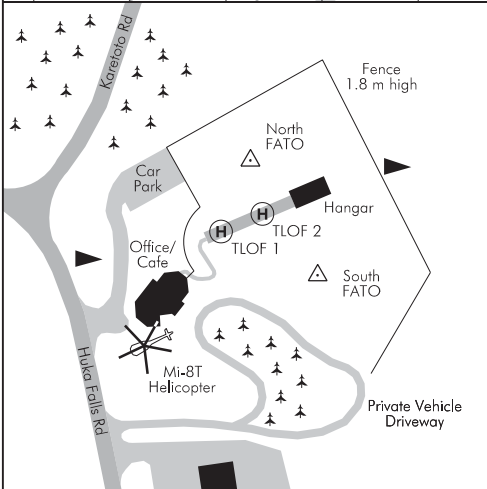
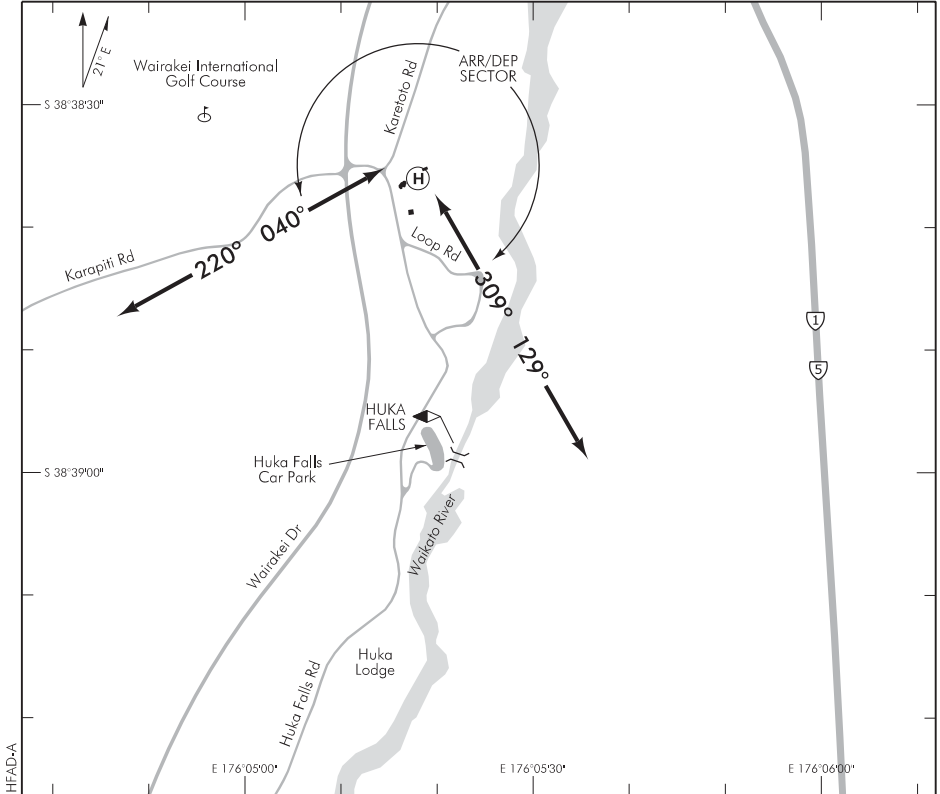
ELEV 1270

NZHF

NON-CERTIFICATED

HUKA FALLS HELIPORT

UNATTENDED: 118.4



1. Heliport located within Taupo MBZ.
2. **CAUTION:** Drone activity at Huka Falls — 0.4 NM south of heliport.
3. Do not overfly Huka Lodge — 0.7 NM south of heliport.
4. Huka Falls is a high traffic area with a lot of aircraft viewing the falls. It is important to make a lifting call.

S 38 38 36 E 176 05 18*

Effective: 8 NOV 18

NZHF

NON-CERTIFICATED

OPERATIONAL DATA**FATO/TLOF**

	SIZE	SFC	STRENGTH	MARKINGS
FATO (North)*	60 m x 30 m	Gr		Contained within deer fence
FATO (South)	60 m x 25 m			
TLOF 1 and 2	5 m x 5 m	B		Standard

* North FATO slopes away approximately 5–6 m

TLOFs are elevated above both FATOs

LIGHTING

Nil

FACILITIES

Telephone

Cafe

SUPPLEMENTARY

Operator: Helisika Ltd,
Poronui, RD 3, Taupo
Tel (07) 384 2816

Administered by: Heli Adventure Flights Taupo
415 Huka Falls Rd,
RD 4, Taupo 3384
Tel (07) 374 8680
Email: adventure@helicoptertours.co.nz

Available with prior approval from the administrator.