

ELEV 200

NZHH

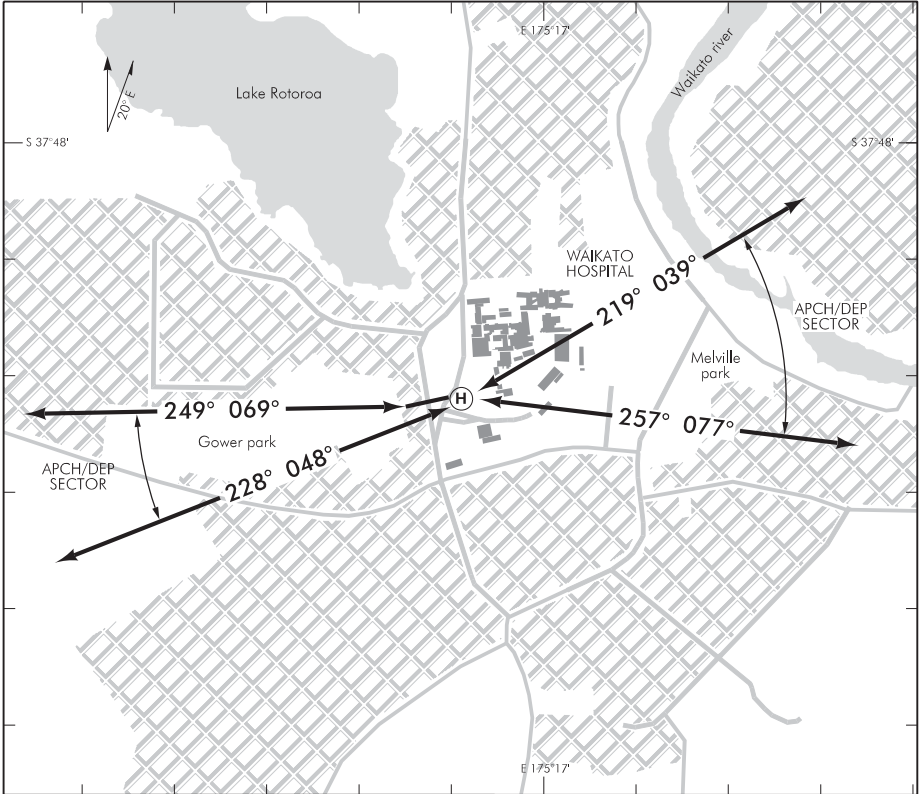
NON-CERTIFICATED

WAIKATO HOSPITAL

HELIPORT

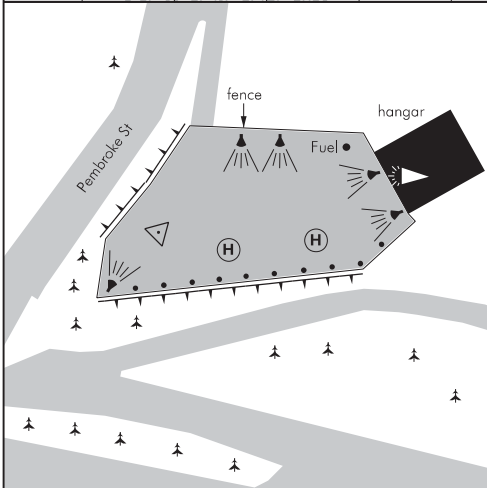
UNATTENDED: 123.75

HAMILTON ATIS: 128.6



HHAD-B

Changes from 28 JUL 11: AD FREQ amended, lighting.



1. Remain clear of populous areas.
2. Preferred APCH/DEP to/from the west.
3. If hangar door is open make final approach to hold initially at western end.

S 37 48 22 E 175 16 51*

Effective: 10 NOV 16

© Civil Aviation Authority

**WAIKATO HOSPITAL
HELIPORT**

FATO/TLOF

	SIZE	SFC	STRENGTH	MARKINGS
FATO	26 m x 50 m	B	6000 kg	Standard
TLOF*	5.6 m	B	6000 kg	Standard

*Applies to both TLOFs

Maximum helicopter size 17.5 m overall length.

LIGHTING

PAL 124.0: Non-standard operation. Transmit 4 pulses within 5 seconds.

TLOF: Amber and blue

WDI: On hangar roof

Floodlighting: From hangar and FATO perimeter

FACILITIES

Fuel: Jet A1 by prior arrangement

SUPPLEMENTARY

Operator: Search and Rescue Services Ltd, PO Box 9308, Hamilton
Tel (07) 839 8869 or 027 492 4305

Available H24 for air ambulance helicopters only unless prior arrangement with the operator.

Contact Waikato Hospital (Tel 07 839 8899) with 15 min ETA.

ELEV 200

CAT H

WAIKATO HOSPITAL

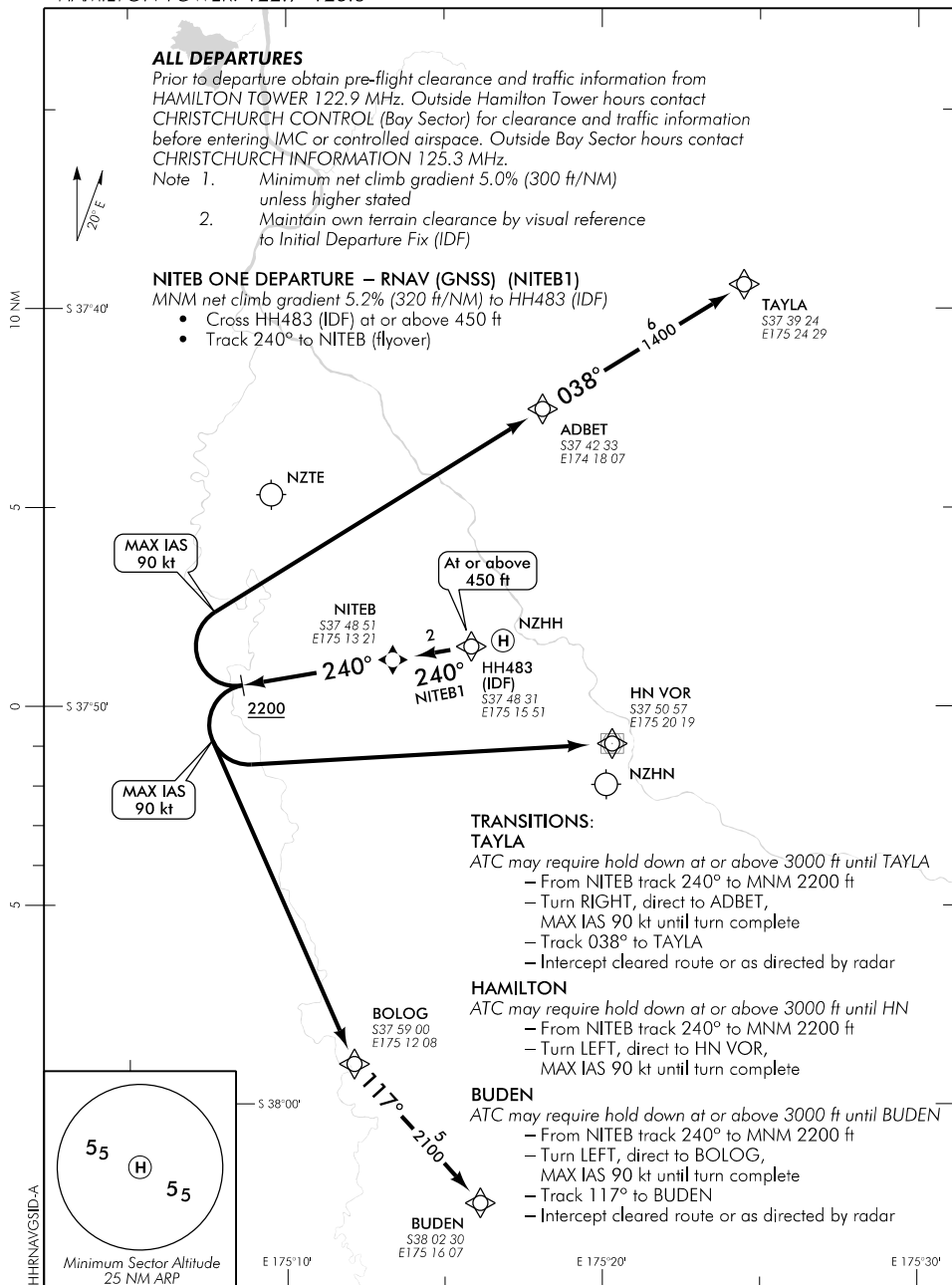
NZHH

RNAV (GNSS) SID

BAY APPROACH: 125.3 123.8
HAMILTON TOWER: 122.9 126.8

HAMILTON ATIS: 128.6

UNATTENDED: 123.75



Effective: 13 SEP 18

