

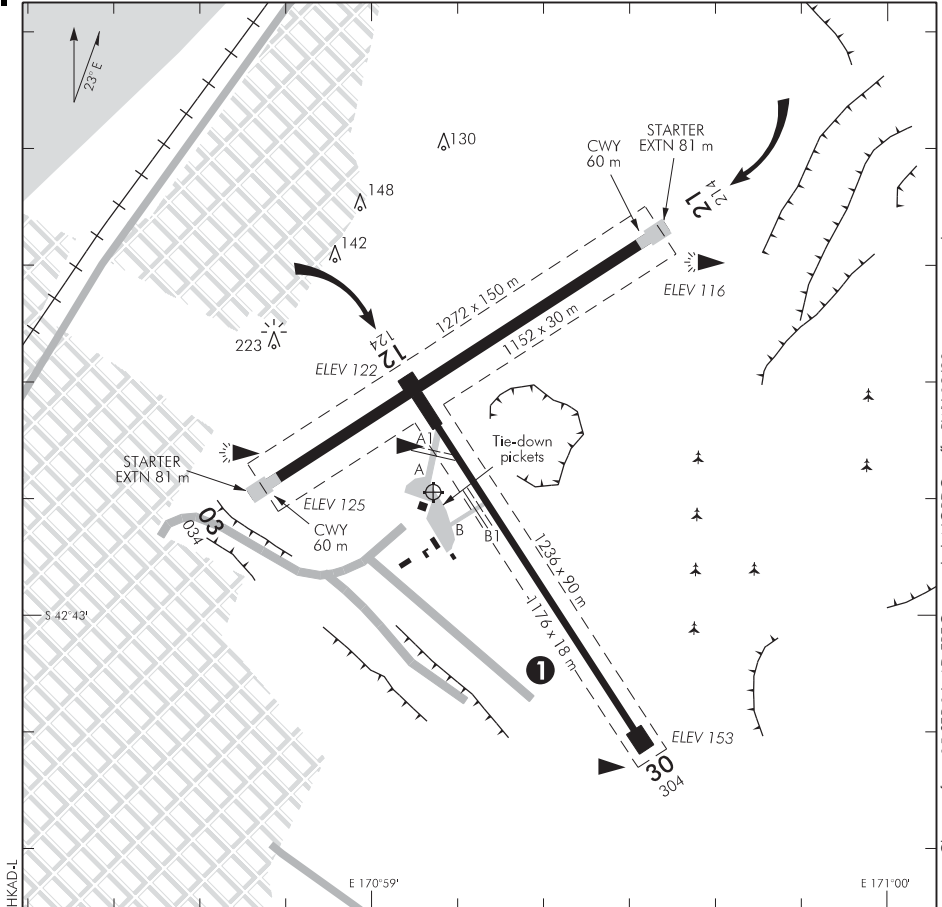
ELEV 153

NZHK

CHRISTCHURCH INFORMATION: 118.5

**HOKITIKA
AERODROME**

UNATTENDED: 119.8



1. Model aircraft flying may take place.
2. Circuit: RWY 03, 30 — Left hand
RWY 21, 12 — Right hand
3. **CAUTION:** a) Microlight aircraft operations. Circuit height 500 ft AGL.
b) Bird hazard. Pukekos and plovers on aerodrome.
c) Mower operates adjacent to operational runway.
4. All aircraft operations confined to sealed runways and taxiways. Stay off grass. Surface very soft.
5. U-turns on sealed runways by aircraft with MCTOW 5700 kg and above to be made in turning bays at RWY ends.
6. ☎ In terminal. Available only during hours of scheduled services.
7. Tie-down pickets located west of TWY B.

D

S 42 42 49 E 170 59 07

Effective: 9 NOV 17

© Civil Aviation Authority

**HOKITIKA
AERODROME**

NZHK

OPERATIONAL DATA**RWY**

RWY	SFC	Strength	Gp	Slope	ASDA	Take-off distance			LDG DIST
						1:20	1:30	1:62.5	
03 21	B	PCN 20 F/A/X/T	8	0.20D 0.20U	1233*			1293*	1152
12 30	B	PCN 20 F/A/X/T	8	0.75U 0.75D	1176		1176		1176

RESA: RWY 03/21 — 90 x 60 m each end

* Includes 81 m starter extension

MINIMA

IFR Take-off		
RWY	Day	Night
12	800–3000	NA
30	300–1500	NA
03/21	300–1500	500–3000

LIGHTINGRunway: 03/21 LIL RWY, APAPI — RWY 03 3.0°/TCH 45
RWY 21 3.0°/TCH 46

RWY edge light spacing — 60 m

Aerodrome: WDI

Taxiway: Edge Apron: Edge and floodlighting

Aerodrome lighting and standby power available by prior arrangement with operator.

FACILITIESFuel: Z Energy Jet A1, access via Z card
RD Petroleum AVGAS, access via RD Petroleum swipe card

Flight crew toilet available outside terminal hours. Toilet access code: 808#

Ground handling Tel (03) 755 6318, (03) 755 7820.

Cafe open during terminal hours.

Access code on pedestrian gate leading to terminal: 808

SUPPLEMENTARYOperator: Hokitika Airport Ltd, PO Box 76, Hokitika 7842
Administration: Tel (03) 755 6318
Operations: Tel (03) 755 6318 or (03) 755 7820
Email: management@hokitikaairport.co.nz
Website: www.hokitikaairport.co.nzLanding fees charged through 'Aimn' — late payments incur an admin fee. By visiting NZHK you agree to our Terms and Conditions of Use — these can be found in full at www.AerodromeIT.co.nz/ad/nzhk

Available for general use without the permission of the operator.

An automatic recording system monitors all landings.

Landing fee allows unlimited landings for that day.

Effective: 25 MAY 17