

ELEV 172

CAT A,B,C,D

# HAMILTON

NZHN

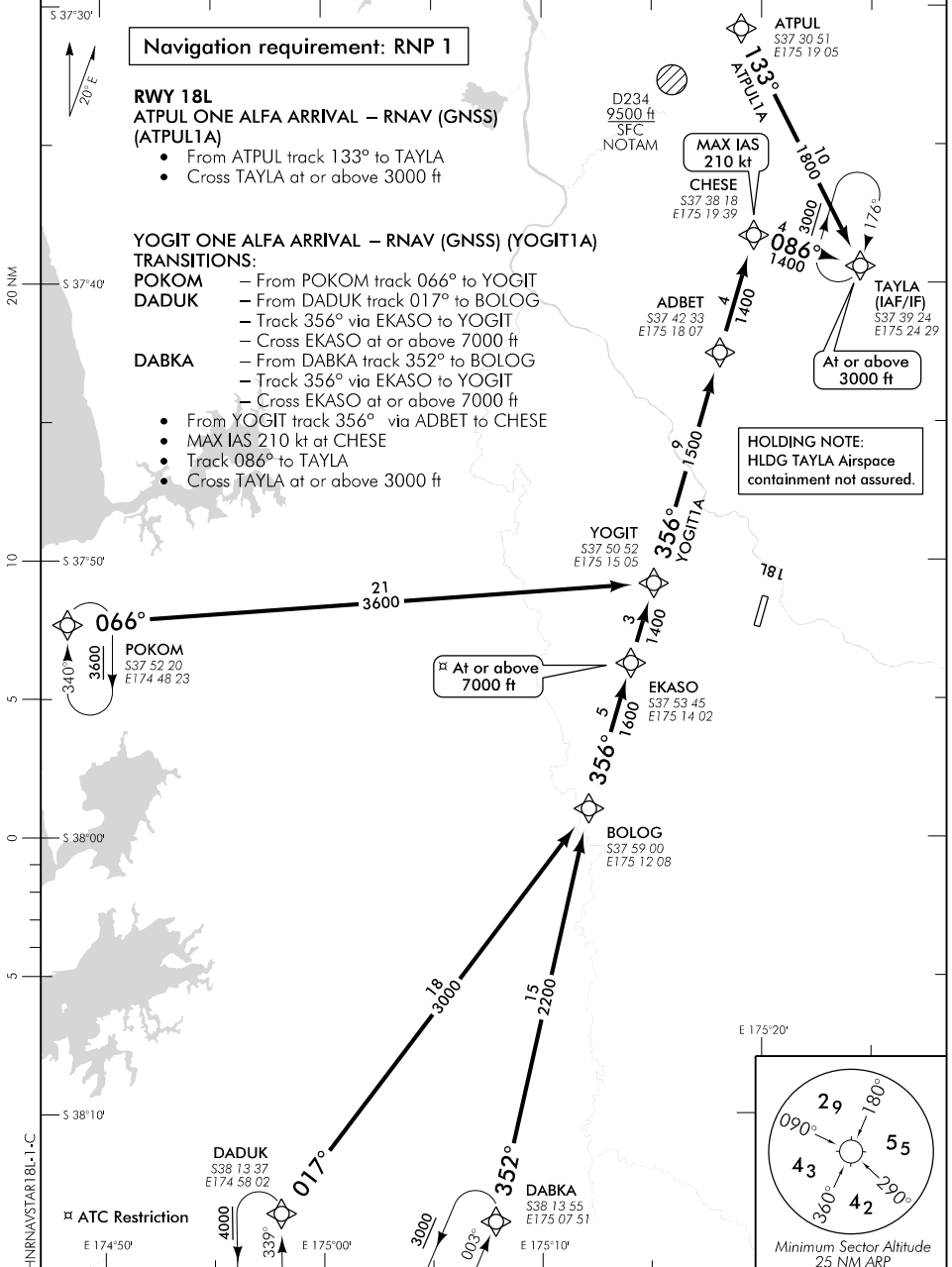
## RNAV (GNSS) STAR RWY 18L (1)

BAY APPROACH: 125.3 123.8

TOWER: 122.9 126.8 119.8

ATIS: 128.6

UNATTENDED: 122.9



Effective: 18 JUL 19

ELEV 172

CAT A,B,C,D

NZHN

# HAMILTON RNAV (GNSS) STAR RWY 18L (2)

BAY APPROACH: 125.3 123.8

TOWER: 122.9 126.8 119.8

ATIS: 128.6

UNATTENDED: 122.9

Navigation requirement: RNP 1

**RWY 18L**  
LAKES TWO CHARLIE ARRIVAL – RNAV (GNSS)  
(LAKES2C)

- From LAKES track 120° to VATNA
- Cross VATNA at or above 2500 ft

ATPUL TWO CHARLIE ARRIVAL – RNAV (GNSS)  
(ATPUL2C)

- From ATPUL track 133° to TAYLA
- Track 176° to VATNA
- Cross VATNA at or above 2500 ft

YOGIT TWO CHARLIE ARRIVAL – RNAV (GNSS) (YOGIT2C)  
TRANSITIONS:

**POKOM** – From POKOM track 066° to YOGIT  
**DADUK** – From DADUK track 017° to BOLOG

– Track 356° via EKASO to YOGIT  
 – Cross EKASO at or above 7000 ft  
**DABKA** – From DABKA track 352° to BOLOG  
 – Track 356° via EKASO to YOGIT  
 – Cross EKASO at or above 7000 ft

- From YOGIT track 356° to ADBET
- MAX IAS 210 kt at ADBET
- Track 086° to VATNA
- Cross VATNA at or above 2500 ft

