

ELEV 172

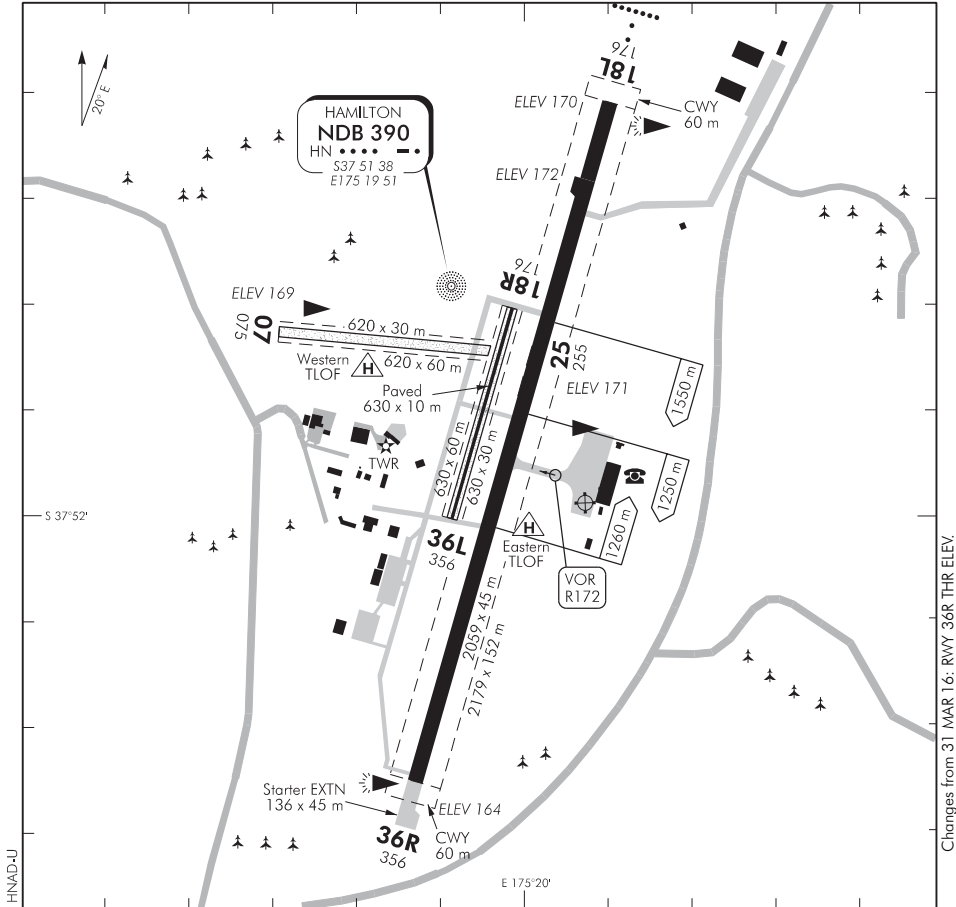
NZHN

TOWER: 122.9 126.8 119.8

ATIS: 128.6

**HAMILTON  
AERODROME (1)**

UNATTENDED: 122.9



1. ▲ = Aircraft holding points.
2. **CAUTION:** TWY K width 5 m.
3. **CAUTION:** Turning bay markings B767 only.
4. Simultaneous operations — visual conditions on paved RWY 18L/36R and grass/paved 18R/36L permitted only for ACFT 2300 kg or less in VMC and when ATC is on watch.
5. In westerly winds severe turbulence and wind shear conditions often exist close to threshold of RWY 25.
6. Ground movements restricted to close mown areas.
7. **CAUTION:** Bird hazard. Plovers, hawks, magpies and various small birds continually present.
8. Parking of general aviation aircraft on the eastern terminal apron or adjacent grass is prohibited without prior authorisation from the airport company.

*(continued)*

S 37 51 59 E 175 20 07

**Effective: 10 NOV 16**

© Civil Aviation Authority

**HAMILTON  
AERODROME (1)**

---

**HAMILTON  
AERODROME (2)**

---

9. Aircraft parking on grass areas adjacent to the eastern terminal apron are requested to park well clear of the apron in order to provide wingtip clearance and protection from potential jet/prop blast from aircraft using the apron.
10. When ATC is on watch, unless otherwise instructed, circuit altitudes are:  
Fixed Wing — 1200 ft AMSL  
Helicopters — 700 ft AMSL
11. **CAUTION:** TWY B, C, E and G width 6 m. Suitable for aircraft 5700 kg MAUW and below. Taxiway BRAVO (B) is approved for use with aircraft taking off and landing on grass/paved RWY 18R/36L.
12. TWY D width 13 m — suitable for B1900 size aircraft.
13. Aircraft instructed to hold at D1 are to remain clear of the taxiway intersection in order to allow aircraft access to and from the runway.
14. When ATC are on watch, aircraft vacating RWY 18L/36R via TWY G, D and E require an ATC clearance to cross grass/sealed RWY 18R/36L to the western side of the runway.
15. Intersection of TWYs D, E and G and RWY 18L/36R marked by single blue runway edge lights 290 mm high and 1.5 m either side of the sealed portion of TWYs D, E and G.
16. RWY 18L/36R end lights do not serve as stop bar lights. Aircraft are permitted to taxi over them to utilise runway extensions and turning bays.
17. Operators using air ambulance park area on the western taxiway are not to park in such a way as to prevent aircraft taxiway access to hangars located on the western side of the air ambulance park area. Additional aircraft parking for ambulance flights is available on the terminal apron, north of Rescue Fire. Refer Hamilton Ground Movements chart.
18. 767 type aircraft arrivals using RWY 36R — LDA of 1824 m applies as turning bay does not extend to end of runway.
19. All jet aircraft Code C and above, should use turning nodes where practicable. Turning nodes are located at threshold of RWY 36R and 235 m south of threshold RWY 18L.
20. Night flying restrictions apply for aircraft below 5700 kg MCTOW. Refer AIPNZ Volume 1 NZHN AD 2-13 para 2.21 Noise Abatement Procedures.
21. Simultaneous operations — visual conditions on RWY 18L/36R and Eastern TLOF permitted only for ACFT 2300 kg or less in VMC and when ATC is on watch.
22. Simultaneous operations — visual conditions on RWY 07/25 and Western TLOF permitted only for ACFT 2300 kg or less in VMC and when ATC is on watch.
23. Helicopters using the Waikato Aero Club Fuel pumps are requested to park on the north side of the fuel pumps safely clear of refuelling equipment.