

ELEV 172

CAT A,B,C,D

HAMILTON

NZHN

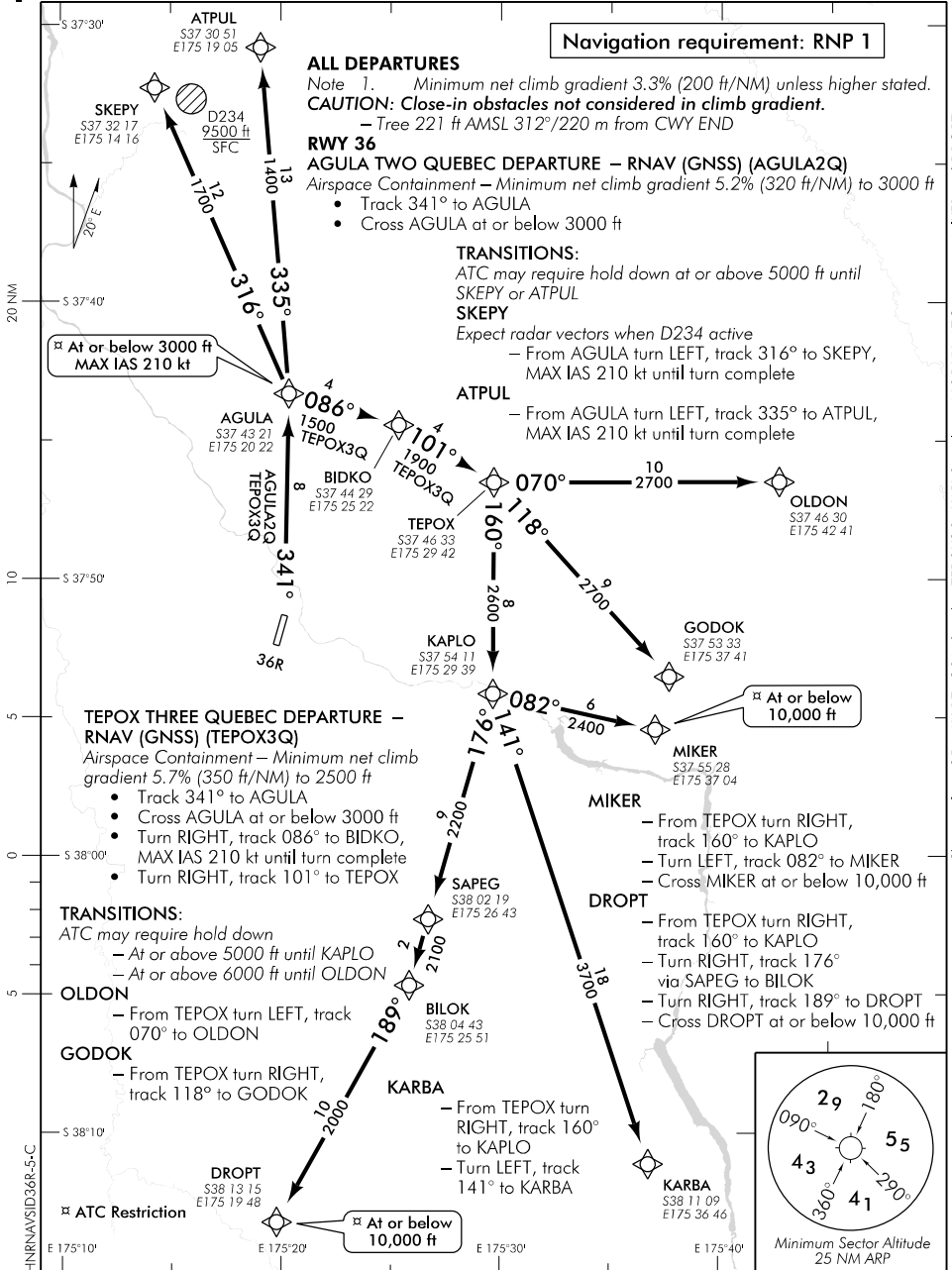
RNAV (GNSS) SID RWY 36R (5)

BAY APPROACH: 125.3 123.8

TOWER: 122.9 126.8 119.8

ATIS: 128.6

UNATTENDED: 122.9



Changes from 25 MAY 17: COM header, TEPOX3Q, KAPLO replaces NODUX, ATC restriction MIKER and DROPT.

Effective: 14 SEP 17

ELEV 172

CAT A,B,C,D

NZHN

HAMILTON

RNAV (GNSS) SID RWY 36R (6)

BAY APPROACH: 125.3 123.8

TOWER: 122.9 126.8 119.8

ATIS: 128.6

UNATTENDED: 122.9

ALL DEPARTURES

Note 1. Minimum net climb gradient 3.3% (200 ft/NM) unless higher stated.

CAUTION: Close-in obstacles not considered in climb gradient.

- Tree 272 ft AMSL 026°/855 m from CWY END

Navigation requirement: RNP 1

✘ ATC Restriction

RWY 36R

TEPOX THREE UNIFORM DEPARTURE - RNAV (GNSS) (TEPOX3U)

- Track 011° to BIDKO
- Cross BIDKO at or below 3000 ft
- Turn RIGHT, track 101° to TEPOX

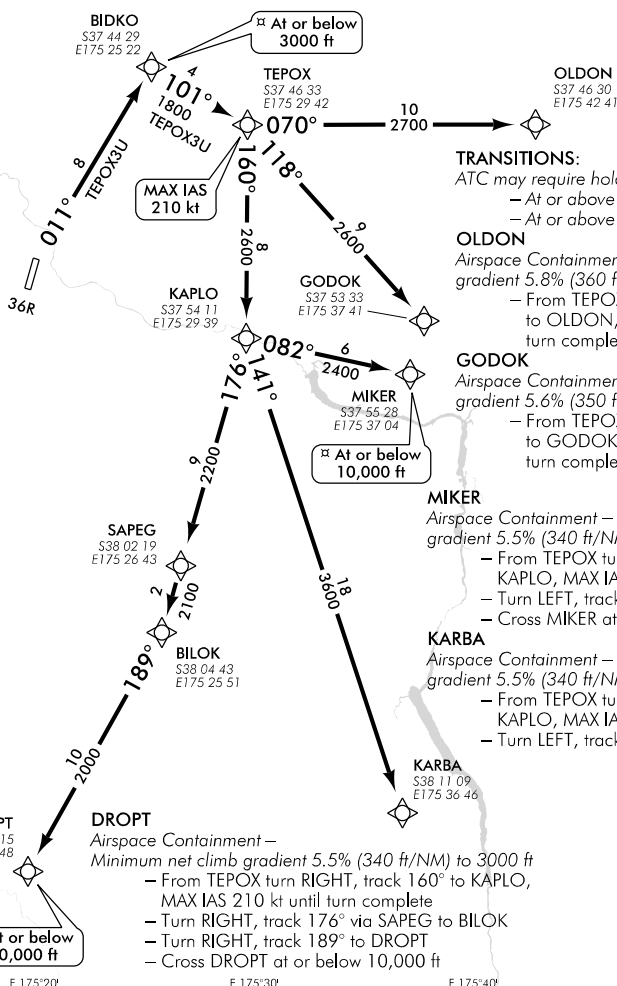
20 NM

S 37°40'

S 37°50'

S 38°00'

S 38°10'



TRANSITIONS:

- ATC may require hold down
- At or above 5000 ft until KAPLO
- At or above 6000 ft until OLDON

OLDON

Airspace Containment - Minimum net climb gradient 5.8% (360 ft/NM) to 5000 ft

- From TEPOX turn LEFT, track 070° to OLDON, MAX IAS 210 kt until turn complete

GODOK

Airspace Containment - Minimum net climb gradient 5.6% (350 ft/NM) to 3000 ft

- From TEPOX turn RIGHT, track 118° to GODOK, MAX IAS 210 kt until turn complete

MIKER

Airspace Containment - Minimum net climb gradient 5.5% (340 ft/NM) to 3000 ft

- From TEPOX turn RIGHT, track 160° to KAPLO, MAX IAS 210 kt until turn complete
- Turn LEFT, track 082° to MIKER
- Cross MIKER at or below 10,000 ft

KARBA

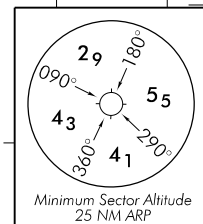
Airspace Containment - Minimum net climb gradient 5.5% (340 ft/NM) to 3000 ft

- From TEPOX turn RIGHT, track 160° to KAPLO, MAX IAS 210 kt until turn complete
- Turn LEFT, track 141° to KARBA

DROPT

Airspace Containment - Minimum net climb gradient 5.5% (340 ft/NM) to 3000 ft

- From TEPOX turn RIGHT, track 160° to KAPLO, MAX IAS 210 kt until turn complete
- Turn RIGHT, track 176° via SAPEG to BILOK
- Turn RIGHT, track 189° to DROPT
- Cross DROPT at or below 10,000 ft



Minimum Sector Altitude 25 NM ARP

Changes from 25 MAY 17: COM header, TEPOX3U, KAPLO replaces NODUX, ATC restrictions MIKER and DROPT.

HNRNAVSID36-6-C

Effective: 14 SEP 17

© Civil Aviation Authority

HAMILTON

RNAV (GNSS) SID RWY 36R (6)