

ELEV 172

CAT A,B,C,D

HAMILTON

NZHN

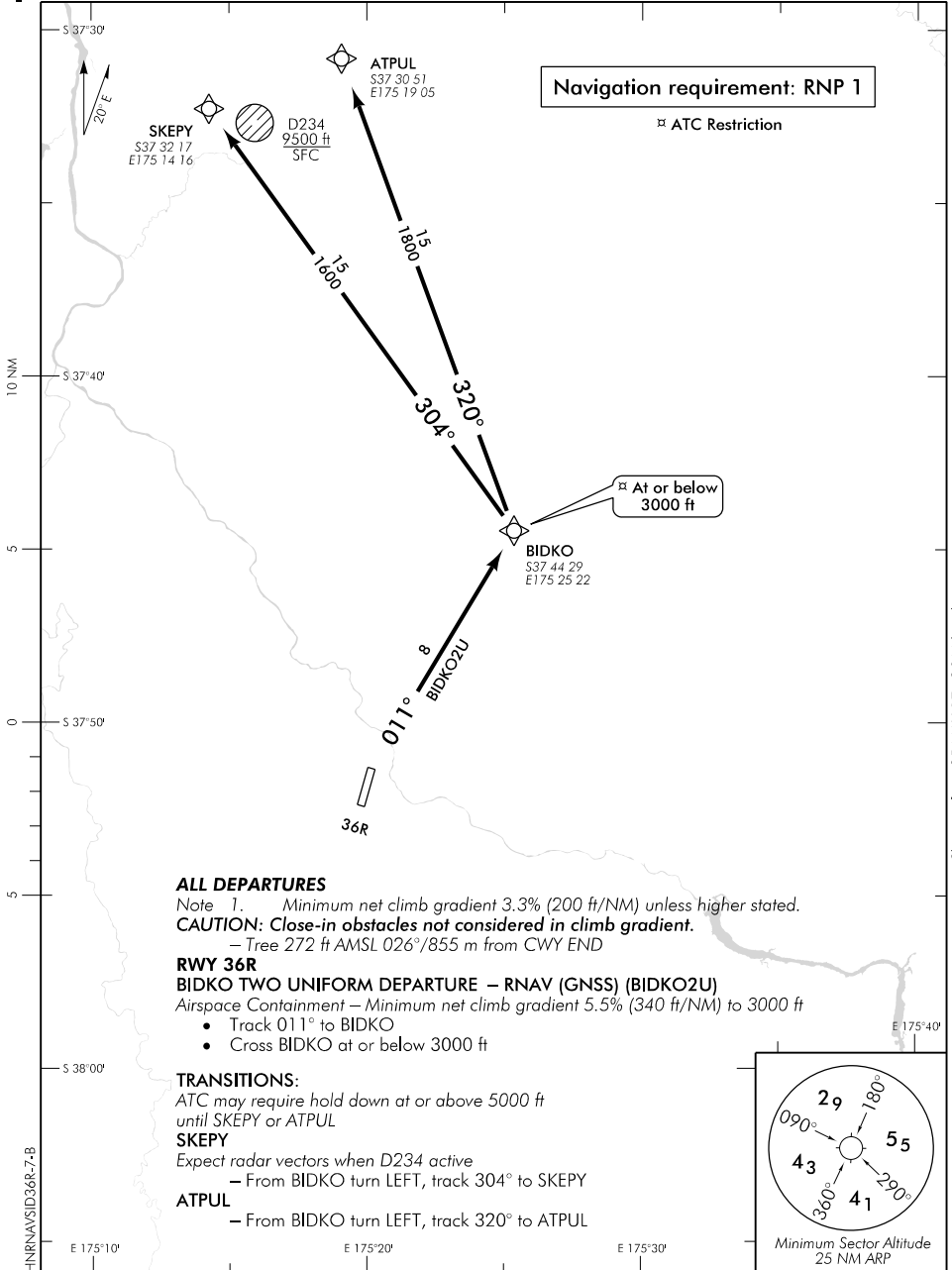
RNAV (GNSS) SID RWY 36R (7)

BAY APPROACH: 125.3 123.8

TOWER: 122.9 126.8 119.8

ATIS: 128.6

UNATTENDED: 122.9



ALL DEPARTURES

Note 1. Minimum net climb gradient 3.3% (200 ft/NM) unless higher stated.

CAUTION: Close-in obstacles not considered in climb gradient.

– Tree 272 ft AMSL 026°/855 m from CWY END

RWY 36R

BIDKO TWO UNIFORM DEPARTURE – RNAV (GNSS) (BIDKO2U)

Airspace Containment – Minimum net climb gradient 5.5% (340 ft/NM) to 3000 ft

- Track 011° to BIDKO
- Cross BIDKO at or below 3000 ft

TRANSITIONS:

ATC may require hold down at or above 5000 ft

until SKEPY or ATPUL

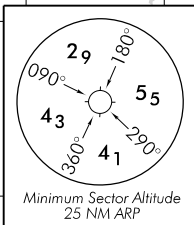
SKEPY

Expect radar vectors when D234 active

– From BIDKO turn LEFT, track 304° to SKEPY

ATPUL

– From BIDKO turn LEFT, track 320° to ATPUL



Effective: 14 SEP 17

