

ELEV 172

CAT A,B,C,D

HAMILTON

NZHN

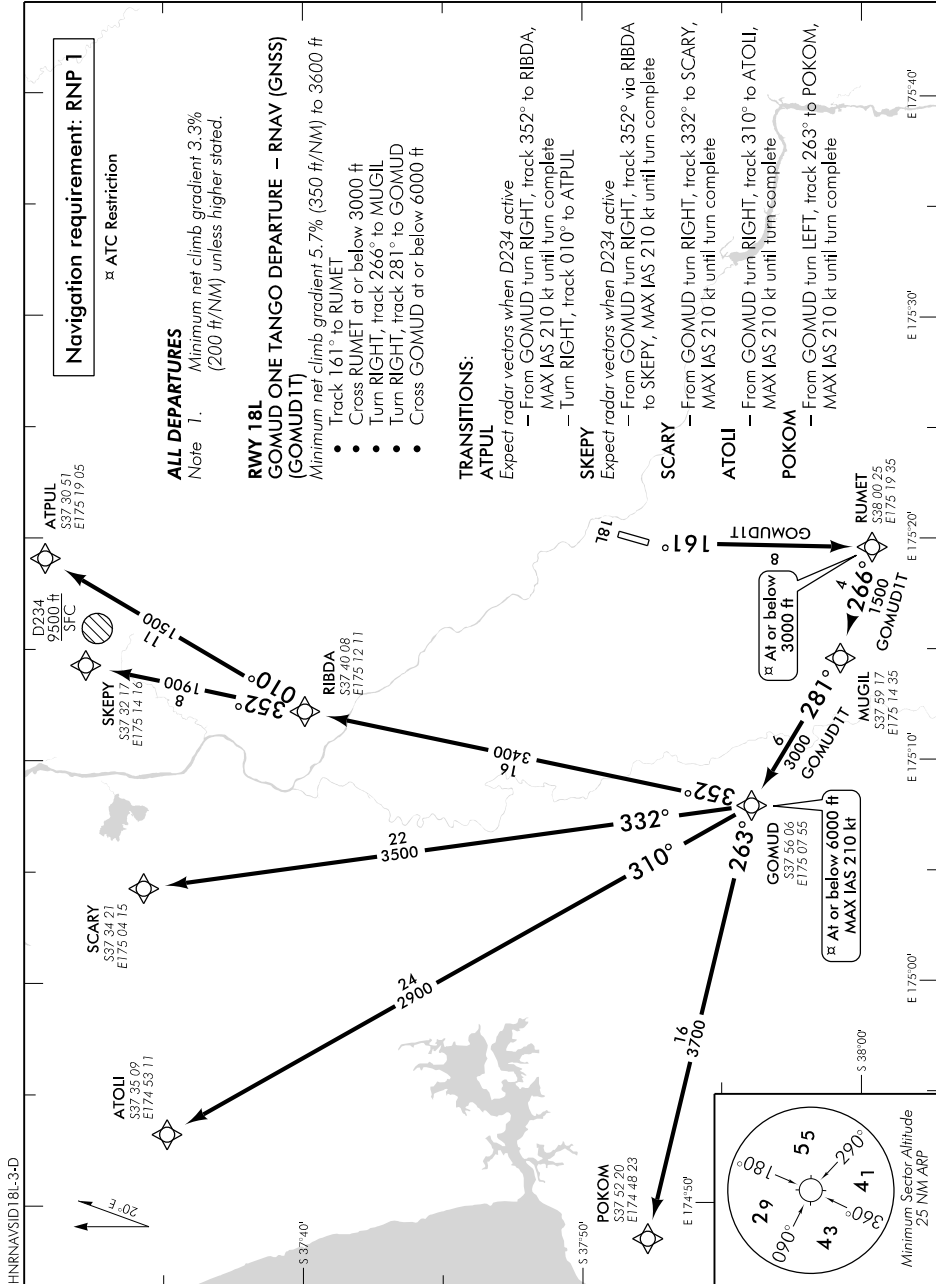
RNAV (GNSS) SID RWY 18L (3)

BAY APPROACH: 125.3 123.8

TOWER: 122.9 126.8 119.8

ATIS: 128.6

UNATTENDED: 122.9



Effective: 1 FEB 18

© Civil Aviation Authority

HAMILTON

RNAV (GNSS) SID RWY 18L (3)

Changes from 14 SEP 17: Airspace Containment text removed from GOMUD1T.

ELEV 172

CAT A,B,C,D

NZHN

HAMILTON

RNAV (GNSS) SID RWY 18L (4)

BAY APPROACH: 125.3 123.8

TOWER: 122.9 126.8 119.8

ATIS: 128.6

UNATTENDED: 122.9

HNRNAV/SID18L-4-C

ALL DEPARTURES

Note 1. Minimum net climb gradient 3.3% (200 ft/NM) unless higher stated.
CAUTION: Close-in obstacles not considered in climb gradient
- Trees MAX 269 ft AMSL located in sector 190° - 208° between 440 m and 940 m from CWY END

RWY 18L GUNDA THREE ROMEO DEPARTURE - RNAV (GNSS) (GUNDA3R)

- Track 176° to GUNDA (fly-over)
- Cross GUNDA at or below 3000 ft

TRANSITIONS:

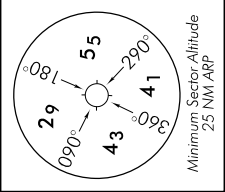
- ATC may require hold down at or above 7000 ft until DADUK, DABKA or DROPT
- DADUK** - From GUNDA turn RIGHT, track 207° to DADUK, MAX IAS 210 kt until turn complete
- Cross DADUK at or below 10,000 ft
- DABKA** - From GUNDA turn RIGHT, track 187° to DABKA, MAX IAS 210 kt until turn complete
- Cross DABKA at or below 10,000 ft
- DROPT** - From GUNDA turn LEFT, track 150° to DROPT, MAX IAS 210 kt until turn complete
- Cross DROPT at or below 10,000 ft

SAPEG THREE ROMEO DEPARTURE - RNAV (GNSS) (SAPEG3R)

- Airspace Containment - Minimum net climb gradient 5.1% (310 ft/NM) to 3000 ft
- Track 176° to GUNDA (fly-over)
- Cross GUNDA at or below 3000 ft
- Turn LEFT, track 086° to SAPEG, MAX IAS 210 kt until turn complete
- Cross SAPEG at or below 6000 ft

TRANSITIONS:

- OLDON** - From SAPEG turn LEFT, track 018° to OLDON, MAX IAS 220 kt until turn complete
- GODOK** - From SAPEG turn LEFT, track 024° to GODOK, MAX IAS 220 kt until turn complete
- MIKER** - From SAPEG turn LEFT, track 030° to MIKER, MAX IAS 220 kt until turn complete
- Cross MIKER at or below 10,000 ft



Navigation requirement: RNP 1

OLDON
S37 46.30
E175 42 41

GODOK
S37 53.33
E175 37 41

MIKER
S37 53.26
E175 37 04

KARBA
S38 11.09
E175 36 46

DROPT
S38 03.15
E175 19 48

DABKA
S38 13.55
E175 07 51

Changes from 25 MAY 17: COM header, transition text update, ATC restrictions, SAPEG3R, GUNDA3R.