

ELEV 64

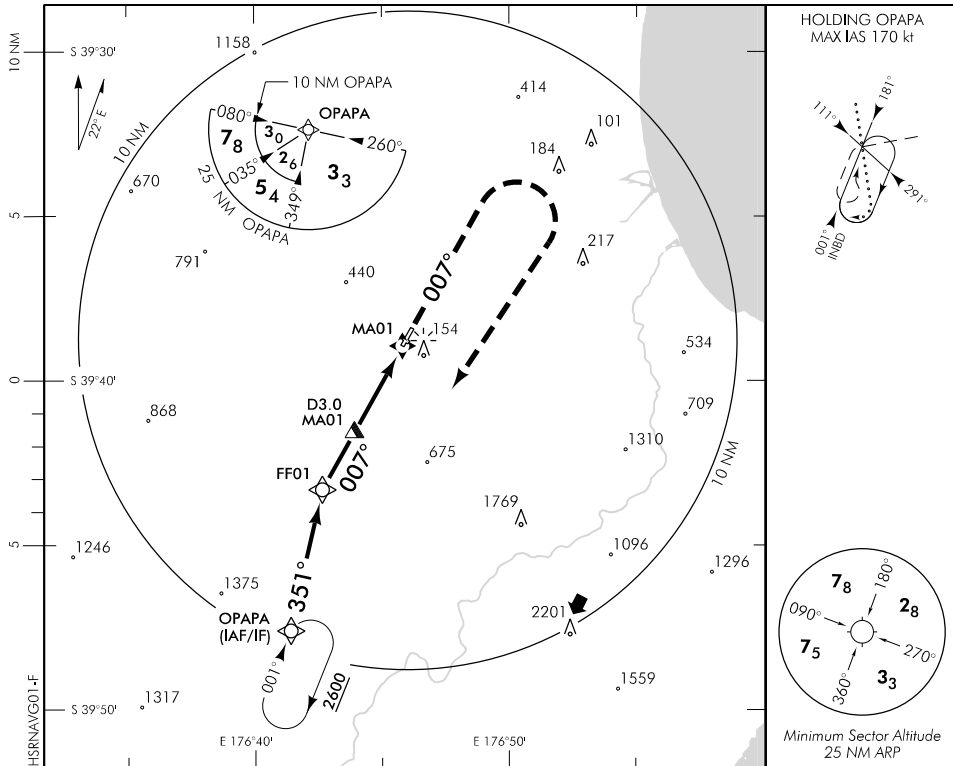
CAT A,B

**HASTINGS**

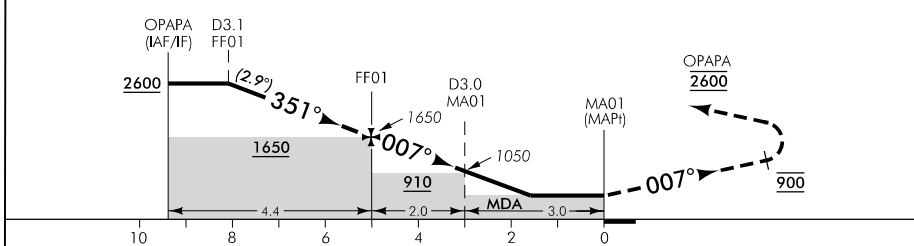
RWY 01 THR ELEV 62

**RNAV (GNSS) RWY 01**

NAPIER TOWER: 124.8 118.1 UNATTENDED: 125.8 AWIB: 132.95 NAPIER ATIS: 128.0



Use remote QNH



MISSED APCH: Track 007° to 900, turn RIGHT direct to OPAPA 2600

DISTANCE TO WPT	OPAPA	4	3	2	1	FF01	4	3	2	1.7	MA01
Advisory Altitude 5%	3000	2850	2550	2250	1950	1650	1350	1050	750	MDA	MDA
Category	A		B			C			D		
LNAV	660(596) - 2000					NA					
Circling	690(626) - 2000			850(786) - 2800							

**Effective: 29 MAR 18**

Changes from 31 MAR 16: Procedure reviewed, minor track changes, minima, AD and THR ELEV, profile, TAA added, MAGVAR and MNM SECT ALT.

ELEV 64

CAT A,B

# HASTINGS

RWY 19 THR ELEV 64

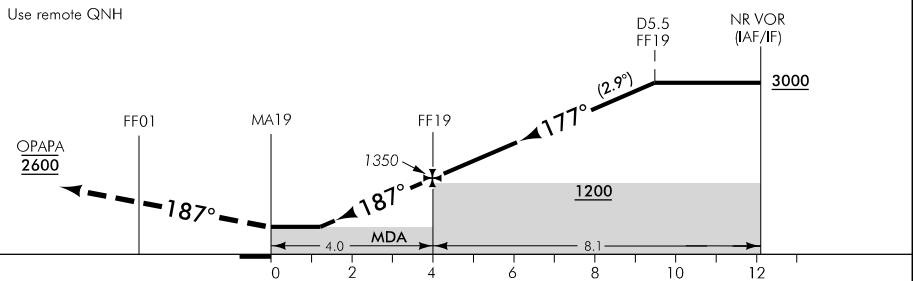
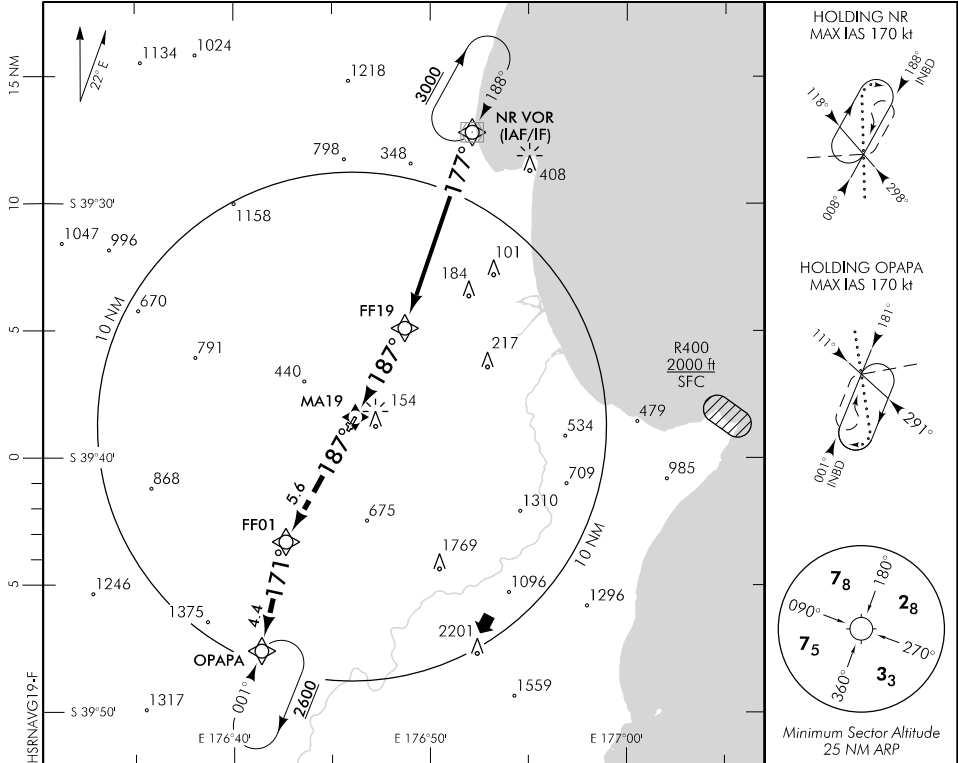
**RNAV (GNSS) RWY 19**

NAPIER TOWER: 124.8 118.1

UNATTENDED: 125.8

AWIB: 132.95

NAPIER ATIS: 128.0



**MISSED APCH:** Track 187° to FF01, turn LEFT track 171° to OPAPA 2600

DISTANCE to WPT	MA19	1.2	2	3	FF19	1	2	3	4	5	6
Advisory Altitude 5%	MDA	MDA	750	1050	1350	1650	1950	2250	2550	2850	3150
Category	A			B			C		D		
LNAV	480(416) - 1600						NA				
Circling	690(626) - 1900			850(786) - 2800							

Changes from 31 MAR 16: Procedure reviewed, minor track changes, minima, MAGVAR, AD and THR ELEV, profile and MNM SECT ALT.

**Effective: 29 MAR 18**