

ELEV 64

NZHS

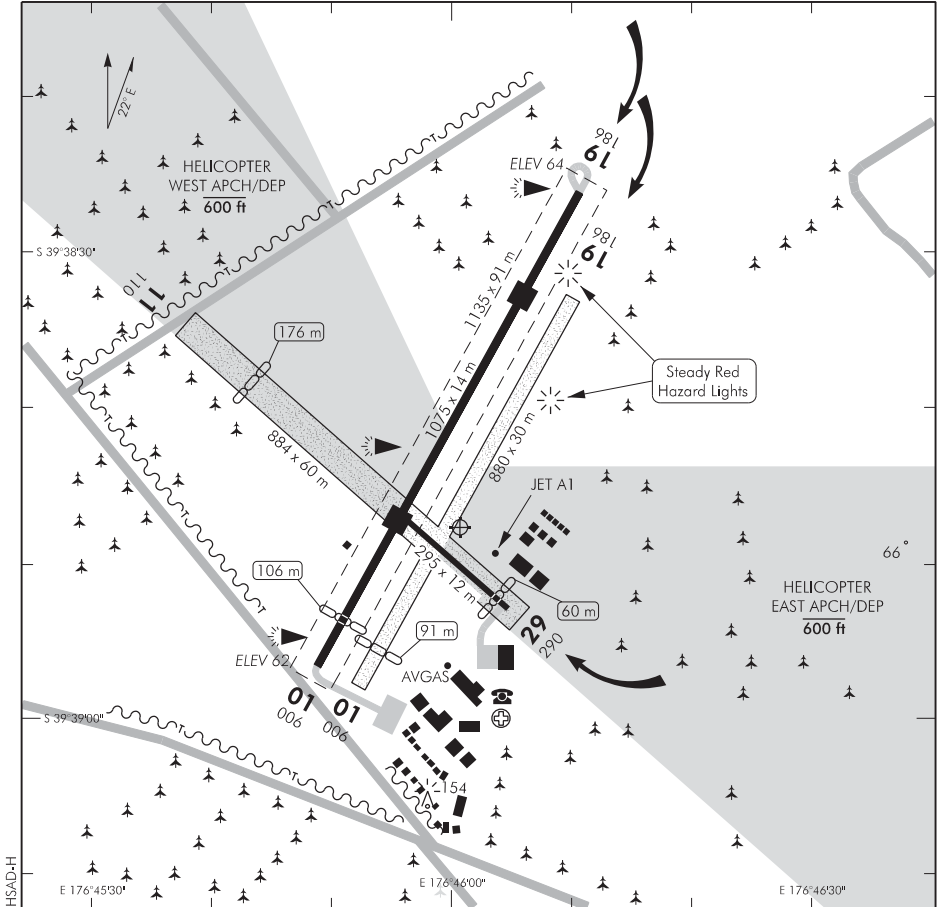
NON-CERTIFICATED

**HASTINGS
AERODROME (1)**

UNATTENDED: 125.8

NAPIER TOWER: 129.9

AWIB: 132.95



- Circuit: *Powered aircraft 1100 ft QNH*
 RWY 01, 11 — Left hand
 RWY 19, 29 — Right hand
 (Powered aircraft in circuit to give way to gliders) Helicopters 600 ft QNH
 RWY 01 — Right hand
 RWY 19 — Left hand

Gliders and tugs 800 ft QNH
 RWY 19, 29 — Left hand
 RWY 01 — Right hand
- Helicopter RWY 01/19 circuit is the same side as the gliding circuit.
- Prior to circuit joining, monitor AWIB 132.95 for notification of gliding operations, mowing and notam related RWY closures, wind, QNH, temperature, etc. Continuous transmission with 10 second interval before repeat.
- Simultaneous take-offs and landings on paved/grass runways are prohibited.
- Once established on final approach all aircraft are to make a FINAL call.
- Intensive gliding may take place, particularly during weekends and public holidays.
- Caution:** Powerlines cross the threshold to RWY 11.

(continued)

S 39 38 48 E 176 46 01*

Effective: 25 FEB 21

© Civil Aviation Authority

**HASTINGS
AERODROME (1)**

HASTINGS
AERODROME (2)

8. Whilst gliding is in progress:
 - (i) all pilots must not depart from the overhead
 - (ii) pilots of powered aircraft should avoid using the overhead joining procedure
 - (iii) gliding takeoffs are prohibited on RWY 11
9. Helicopters APCH/DEP:
 - (i) use East/West procedures as on chart, not above 600 ft QNH within circuit
 - (ii) comply with circuit procedures in use
 - (iii) call prior to crossing the active runway, giving way to all fixed-wing traffic
 - (iv) helicopter circuit operations will sequence or give way as appropriate to fixed-wing aircraft
10. Helicopter operators must contact the aerodrome operator for approval prior to operating in the helicopter circuit.
11. NORDO operators must contact the aerodrome operator (Tel 06 879 8466) for traffic information and intentions prior to operating at NZHS.
12. Noise Abatement: There is a night curfew ban for training circuits between 2200 – 0700 LMT.
13. On the ground at NZHS contact with Napier TWR is available on 129.90.