

ELEV 64

CAT A,B

HASTINGS

NZHS

DEPARTURE RWY 01

NAPIER TOWER: 124.8 118.1

NAPIER ATIS: 128.0

AWIB: 132.95

UNATTENDED: 125.8



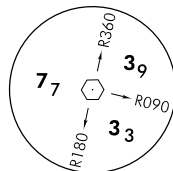
Departure procedure – Take-off RWY 01

During Napier Tower hours, pre-flight clearance required from NAPIER TOWER 129.9 MHz.
 Outside Napier Tower hours contact CHRISTCHURCH INFORMATION 129.9 MHz for clearance and traffic information prior to departure. If airborne, contact 125.6 MHz prior to entering IMC or controlled airspace for clearance and traffic information.

- Note
1. Minimum net climb gradient 3.3% (200 ft/NM) unless higher stated
 2. ATC requirement: H24 – all flights cleared at 11,000 ft or above:
 – maintain 10,000 ft to 30 NR

CAUTION: Close-in obstacles not considered in climb gradient

- Trees MAX 150 ft AMSL left and right of centre-line between RWY END and 720 m from RWY END



Minimum Sector Altitude
25 NM NR

RWY 01

VICTOR TWO DEPARTURE (VICTOR2)

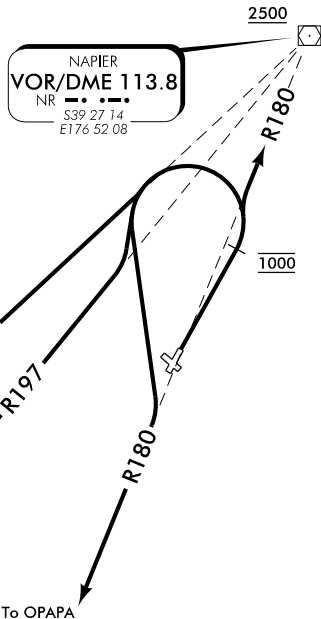
To NR VOR

Minimum net climb gradient 3.5% (210 ft/NM)

- Maintain RWY CL to 1000 ft
- At 1000 ft, turn LEFT intercept R180 to NR VOR
- Cross NR VOR at MNM 2500 ft
- Intercept cleared route

To YARRO, RIDLA, OPAPA

- Maintain RWY CL to 1000 ft
- At 1000 ft, turn LEFT intercept cleared route



CAUTION
 Napier AD lies 002°/11.8 NM from Hastings AD. Simultaneous IFR operations may conflict.

HSDEP01-L

Changes from 5 NOV 20: Minor radial updates.

ELEV 64

CAT A,B

NZHS

HASTINGS
DEPARTURE RWY 19

NAPIER TOWER: 124.8 118.1 NAPIER ATIS: 128.0 AWIB: 132.95 UNATTENDED: 125.8



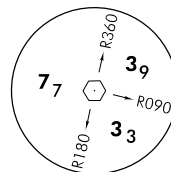
Departure procedure – Take-off RWY 19

During Napier Tower hours, pre-flight clearance required from NAPIER TOWER 129.9 MHz.
Outside Napier Tower hours contact CHRISTCHURCH INFORMATION 129.9 MHz for clearance and traffic information prior to departure. If airborne, contact 125.6 MHz prior to entering IMC or controlled airspace for clearance and traffic information.

- Note
1. Minimum net climb gradient 3.3% (200 ft/NM) unless higher stated
 2. ATC requirement: H24 – all flights cleared at 11,000 ft or above:
– maintain 10,000 ft to 30 NR

CAUTION: Close-in obstacles not considered in climb gradient

– Trees MAX 190 ft AMSL left and right of centre-line between RWY END and 700 m from RWY END



Minimum Sector Altitude
25 NM NR

RWY 19

WHISKEY TWO DEPARTURE (WHISKEY2)

To NR VOR

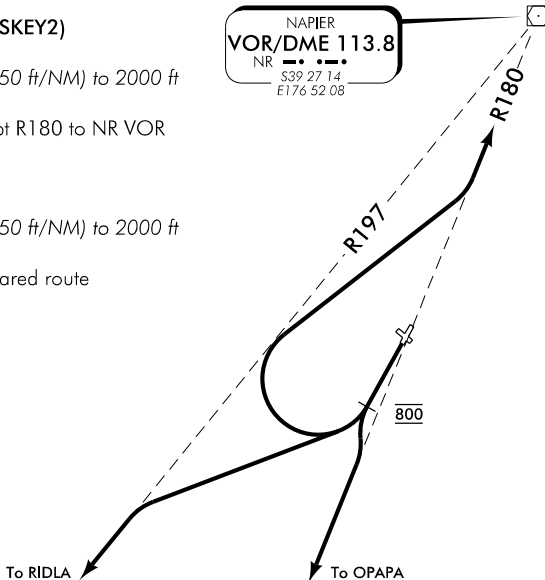
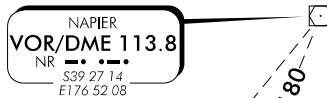
Minimum net climb gradient 4.0% (250 ft/NM) to 2000 ft

- Maintain RWY CL to 800 ft
- At 800 ft, turn RIGHT intercept R180 to NR VOR
- Intercept cleared route

To RIDLA, OPAPA

Minimum net climb gradient 4.0% (250 ft/NM) to 2000 ft

- Maintain RWY CL to 800 ft
- At 800 ft, turn to intercept cleared route



CAUTION
Napier AD lies 002°/11.8 NM from Hastings AD. Simultaneous IFR operations may conflict.

HSDEP19-L

Changes from 5 NOV 20: Minor radial updates.