

ELEV 154

# WHANGAREI HOSPITAL

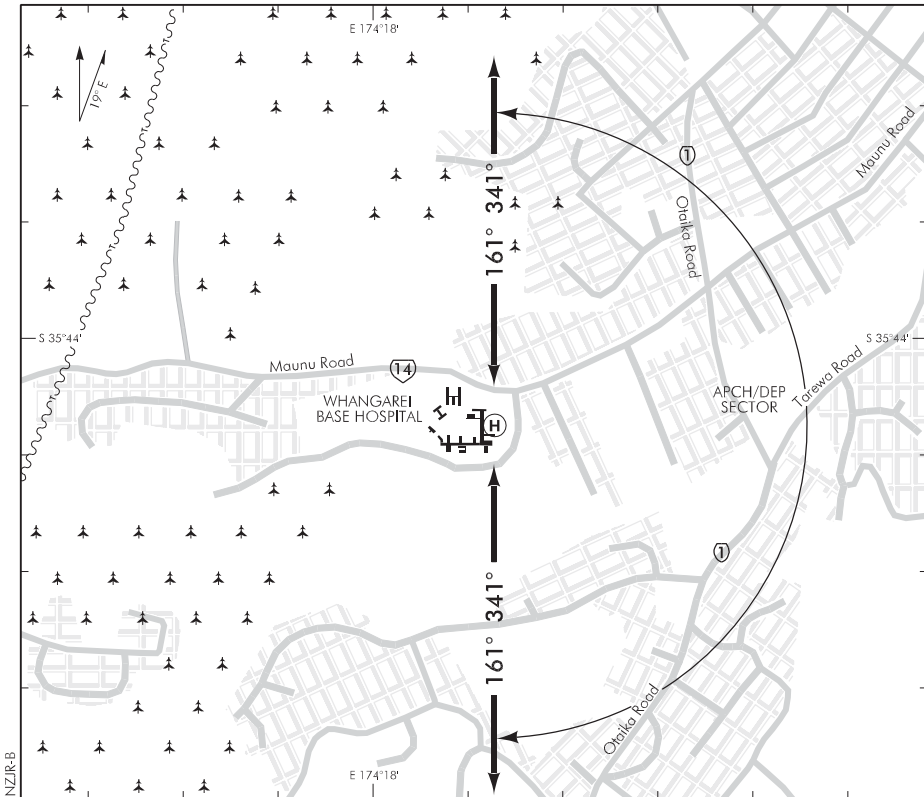
NZJR

NON-CERTIFICATED

HELIPORT

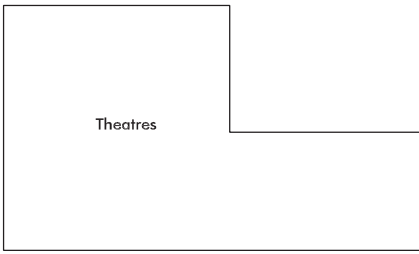
FLIGHT INFORMATION CHRISTCHURCH INFORMATION: 124.9

UNATTENDED: 118.6

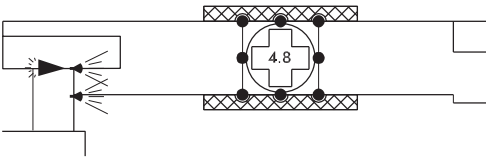


NZJR-B

Changes from 4 SEP 03: Helipad mass marking.



Rooftop heliport.  
Obstacles: Buildings to west.



S 35 44 05 E 174 18 11\*

Effective: 13 APR 06

# WHANGAREI HOSPITAL HELIPORT

Non-Certificated Heliport 1NM SW of  
Whangarei city centre

**WHANGAREI HOSPITAL**

NZJR

**OPERATIONAL DATA****FATO/TLOF**

	SIZE	SFC	STRENGTH	MARKINGS
FATO	12.8m x 12.8m	Conc	4800	Hospital
TLOF				

**D****LIGHTING**

PAL: 124.0 Standard operation — transmit 5 pulses within 3 seconds

TLOF: Perimeter and floodlighting

WDI

**FACILITIES**

Nil

**SUPPLEMENTARY**

Operator: Northland District Health Board, Private Bag 9742, Whangarei.  
Tel (09) 430 4100 Fax (09) 430 4116

Available for limited use subject to the prior agreement of the operator.