

ELEV 675

# TAUMARUNUI HOSPITAL

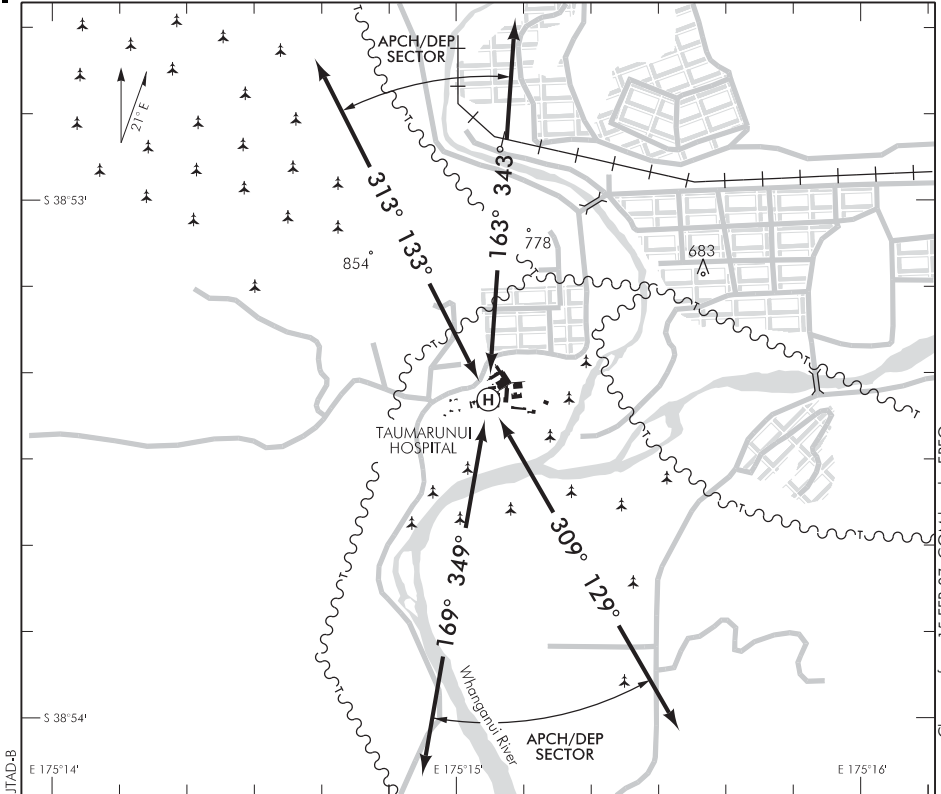
NZJT

NON-CERTIFICATED

HELIPORT

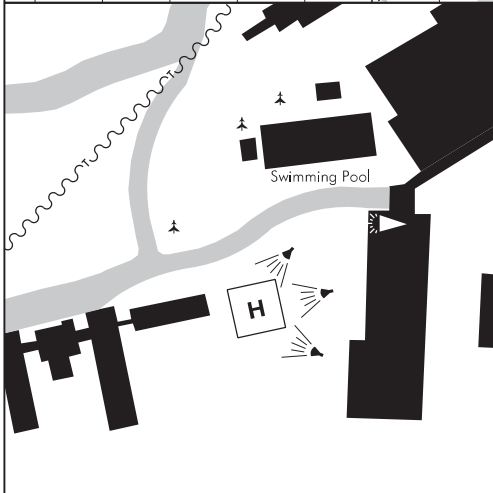
AUCKLAND CONTROL: 126.0

UNATTENDED: 119.1



JTAD-B

Changes from 15 FEB 07: COM header FREQ.



Obstacles: Power lines below FATO level in APCH/DEP sector.

Departing IFR helicopters — Contact Christchurch Information prior to entering controlled airspace or IMC.

S 38 53 23 E 175 15 05

# TAUMARUNUI HOSPITAL HELIPORT

**Effective: 14 SEP 17**

**FATO/TLOF**

	SIZE	SFC	STRENGTH	MARKINGS
FATO	Diameter 16 m	Gr		Nil
TLOF	5 m x 5 m	Conc	5000	Standard H

Maximum helicopter size 13 m overall length.

**LIGHTING**

TLOF: Floodlighting. Call hospital to have lights switched on.

WDI

**FACILITIES**

Nil

**SUPPLEMENTARY**

Operator: Health Waikato Ltd, Private Bag 1002, Taumarunui.  
Tel (07) 896 0020 Fax (07) 896 0025

Available for limited use subject to the prior agreement of the operator.