

ELEV 675

CAT H

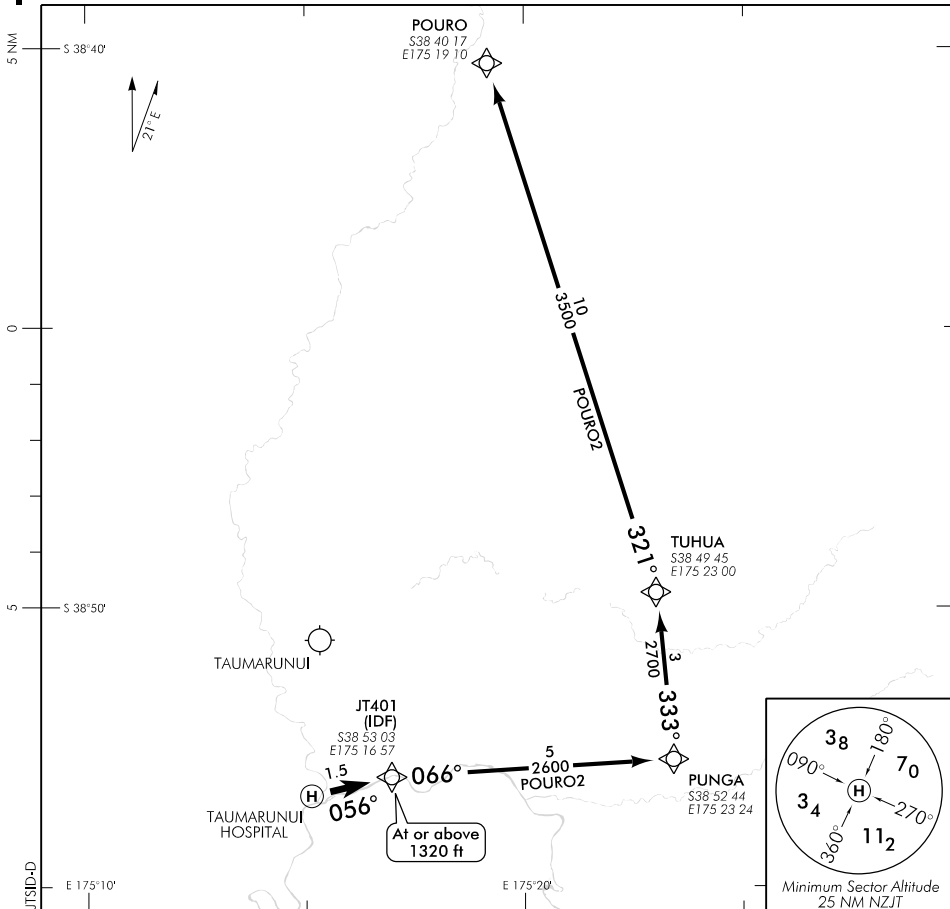
TAUMARUNUI HOSPITAL

NZJT

RNAV (GNSS) SID

AUCKLAND CONTROL: 126.0

UNATTENDED: 119.1



ALL DEPARTURES

- Note
1. Prior to departure obtain pre-flight clearance and traffic information from AUCKLAND CONTROL 126.0 MHz or Tel 0800 626 756 (landline users only) or 03 358 1509 (cellphone users).
 2. Minimum net climb gradient 5.0% (300 ft/NM) unless higher stated.
 3. Maintain own terrain clearance by visual reference to Initial Departure Fix (IDF).

POURO TWO DEPARTURE – RNAV (GNSS) (POURO2)

Minimum net climb gradient 7.2% (440 ft/NM) to JT401 (IDF)

Minimum net climb gradient from IDF 5.4% (330 ft/NM) to 3500 ft

- Track 056° to JT401 (IDF)
- Cross JT401 (IDF) at or above 1320 ft
- Track 066° to PUNGA
- Turn LEFT, track 333° to TUHUA
- Turn LEFT, track 321° to POURO

Effective: 20 JUL 17

TAUMARUNUI HOSPITAL

