

ELEV 149

CAT H

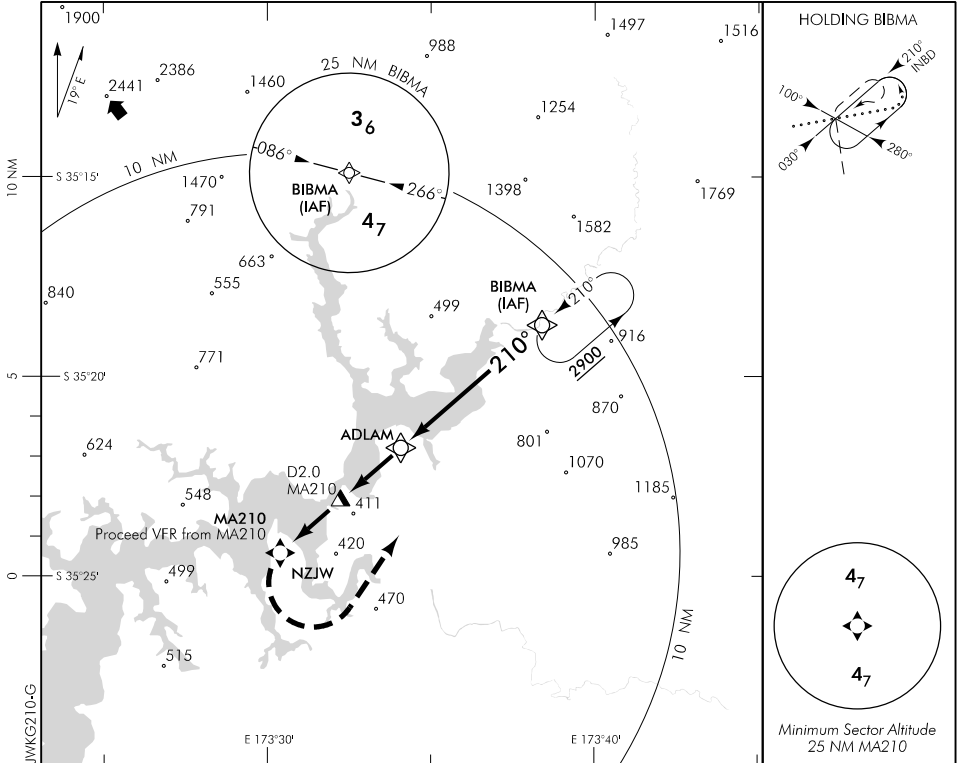
RAWENE HOSPITAL

NZJW

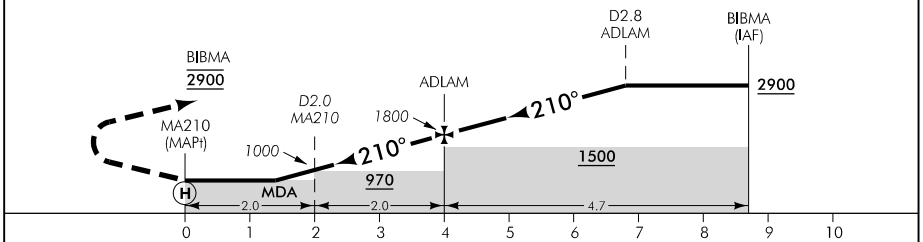
RNAV (GNSS) 210

CHRISTCHURCH INFORMATION: 127.1 118.5

UNATTENDED: 119.1



Use Rawene Hospital QNH.



MISSED APCH: Turn LEFT direct to BIBMA 2900

DISTANCE to WPT	MA210	1.4	2	3	ADLAM	1	2	3	4	BIBMA
Advisory Altitude 6.5%	MDA	MDA	1000	1400	1800	2200	2600	3000	3400	3800
Category	H									
LNAV	750(601) – 2600									

FOR NORTHLAND EMERGENCY SERVICES TRUST APPROVED OPERATORS ONLY

Effective: 30 MAR 17

Changes from 31 MAR 16: TOGOL WPT replaced by BIBMA.

