

NZKE

VFR ARRIVAL AND DEPARTURE PROCEDURES (1)

UNATTENDED: 120.4

Requirement to Comply with Published Procedures

All aircraft arriving and departing at Waiheke aerodrome must comply with the published arrival and departure procedures.

Failure to comply with the published procedures may result in a ban on the use of the privately owned aerodrome.

Aircraft movement details must be completed on envelopes provided in honesty box, unless prior arranged.

Pilot Briefing

Pilots who are not on the Waiheke aerodrome approved operators list must contact the Airfield Manager on Tel 027 477 7339 for a briefing.

Commercial fixed wing operations require prior arrangement from Flight Hauraki on Tel 0508 235 969.

**Avoid overflying the residential area to the north of the aerodrome.
Pilots should avoid using the overhead join procedure.
Preferred departure and arrival is to and from the south if aerodrome
conditions permit.**

**Arrival and Departure Procedures
(refer diagram on NZKE AD 2-35.2)****RWY 17 Aerodrome Traffic Circuit – Left Hand****Arrival**

- If arriving from the north, join the aerodrome circuit on a 45° off-set final approach track.
- Manoeuvre by 45° off-set base leg/final approach track from the late downwind position to avoid overflying the residential area to the north of the extended runway centreline.

RWY 35 Aerodrome Traffic Circuit – Right Hand**Departure**

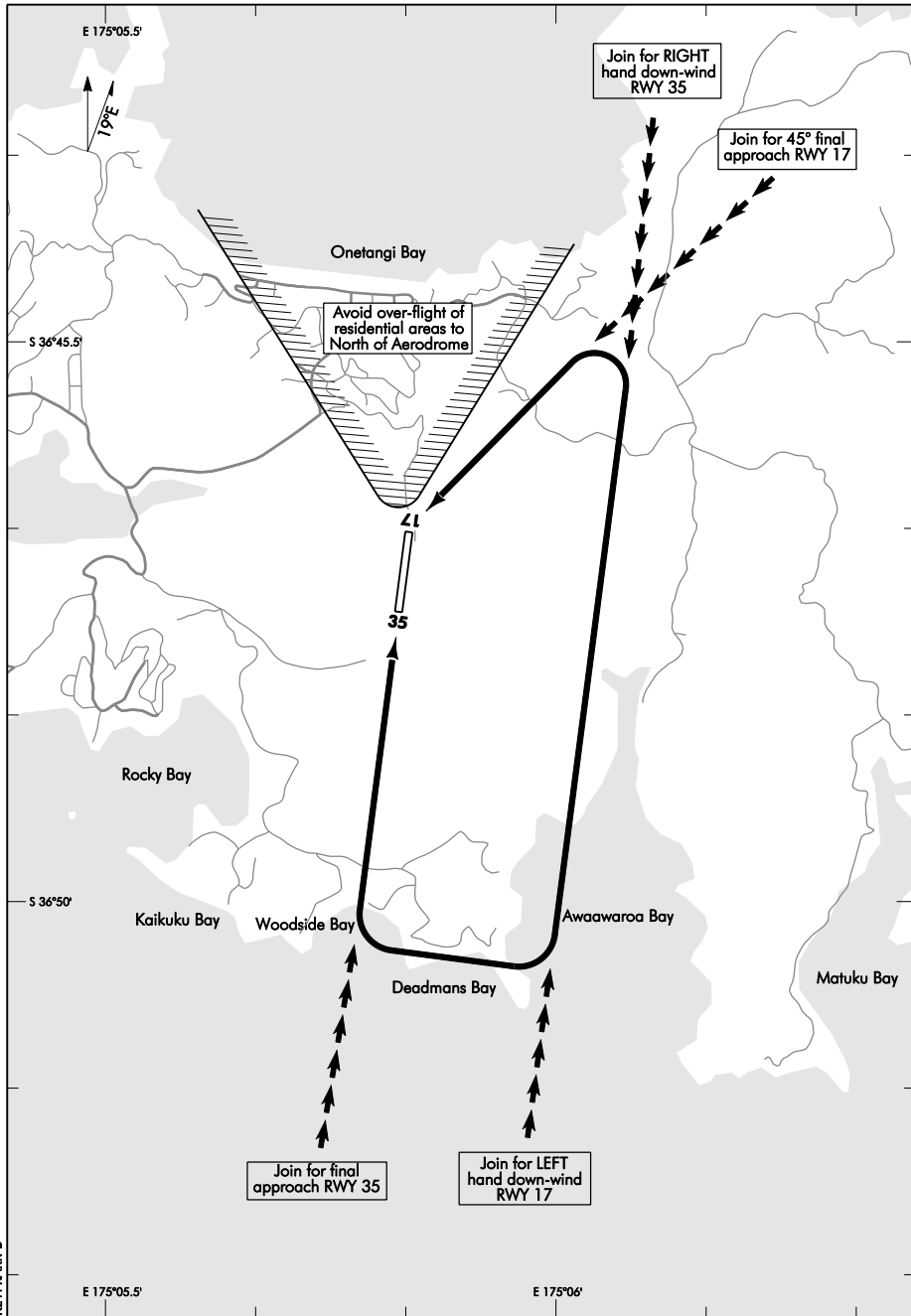
- After take-off, make a 45° RIGHT turn as soon as it is safe to do so to avoid overflying the residential area to the north of the extended runway centreline.

WAIHEKE

NZKE

VFR ARRIVAL AND DEPARTURE PROCEDURES (2)

UNATTENDED: 120.4



Changes from 25 NOV 04: MAG VAR.

Effective: 20 SEP 12

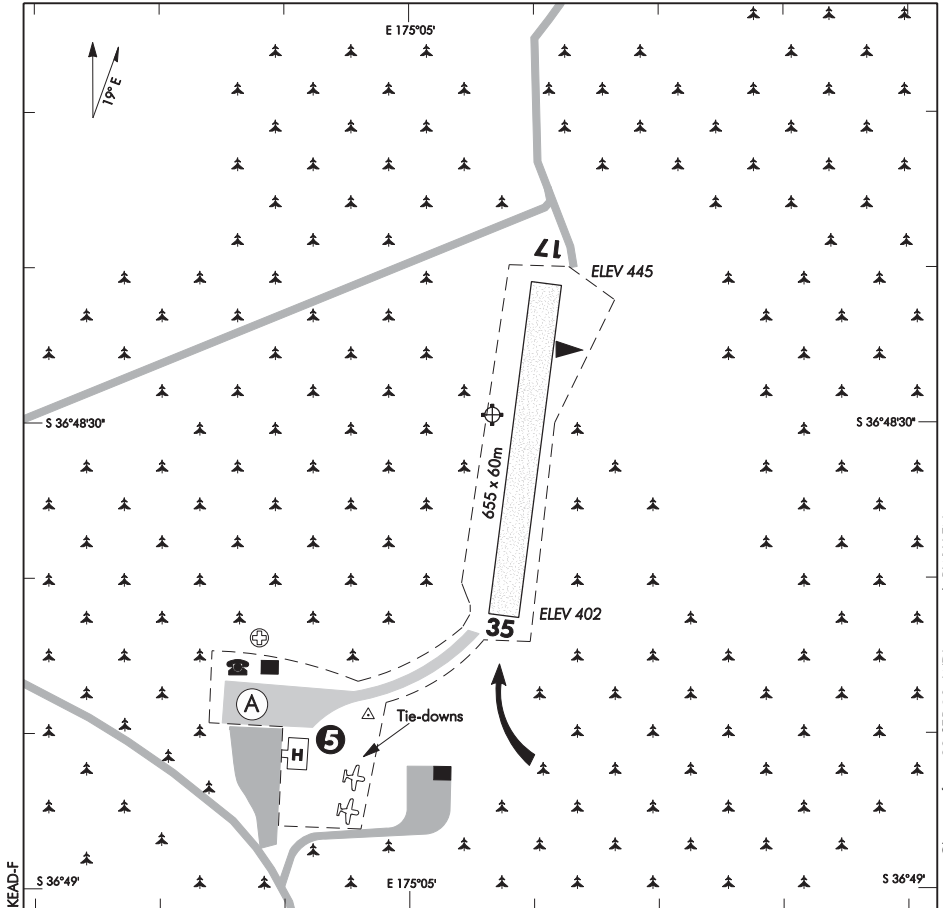
ELEV 445

NZKE

NON-CERTIFICATED

**WAIHEKE
AERODROME**

UNATTENDED: 120.4



Changes from 23 SEP 10: WDI removed, RWY LEN.

1. Circuit: RWY 17 — Left hand
RWY 35 — Right hand
2. Operational conditions: aircraft should avoid flying over houses on the extended northern centreline.
3. Touch and go landings prohibited.
4. Avoid prolonged parking in the passenger set-down area (Marked 'A').
5. Surface soft after heavy rain.
6. Possible severe turbulence in easterly wind conditions on short finals RWY 35.
7. Possible severe windshear in strong south-west wind conditions on short final RWY 17.
8. Helipad (marked 'H') to be used for passenger drop-off and pick-up operations only — no parking is allowed as area is used by emergency services.
9. **CAUTION:** During winter months confine aircraft movement to centre of runway. Areas of soft ground can develop outside runway boundaries.

S 36 48 30 E 175 05 07*

Effective: 20 SEP 12

© Civil Aviation Authority

**WAIHEKE
AERODROME**

NZKE

OPERATIONAL DATA**RWY**

RWY	SFC	Strength	Gp	Slope	ASDA	Take-off distance			LDG DIST
						1:20	1:30	1:40	
17 35	Gr	ESWL 1428	4	2.0D 2.0U		655	655		655

LIGHTING

Nil

FACILITIES

Fuel: Limited, by prior arrangement with Heliscene Tel (09) 372 5000

Parking Tie-downs Telephone Internet Toilet Facilities

Fire extinguisher: Located in SE corner of hangar

SUPPLEMENTARY

Operator: Waiheke Airfield Management Ltd, PO Box 201038, Auckland Airport, Manukau 2150
Tel (09) 620 8766 or (0274) 777339
Email: waihekeairfield@xtra.co.nz

Available for general use only with permission and briefing from operator.

Commercial fixed wing operations require prior arrangement from Flight Hauraki
Tel 0508 235 969

Landing fees payable in honesty box located on SE corner of hangar.

Private fixed wing and helicopter operations: \$15.00
Commercial fixed wing and helicopter operations: \$25.00
Training: \$25.00 per student per day

Parking:
Overnight MCT (day one) until ECT (day two): \$25.00 includes all landing fees.
Weekly MCT (day one) until ECT (day seven): \$50.00 includes all landing fees.

Training organisations must contact the operator and register before carrying out any operations.

An administration fee of \$25 applies if landing fees are unpaid at time of landing and billed later.

Aircraft movement details must be completed on envelopes provided in honesty box, unless prior arranged.