

ELEV 492

CAT A,B

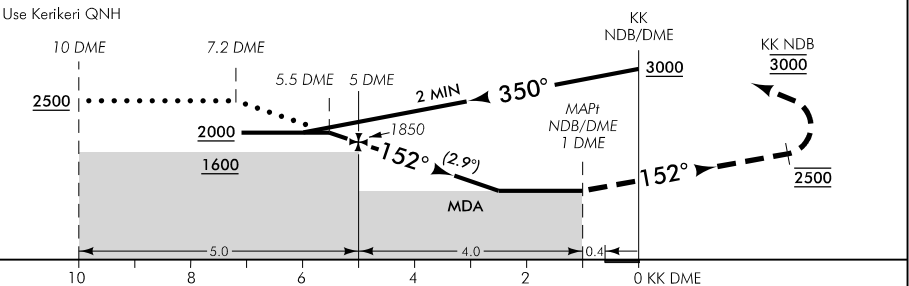
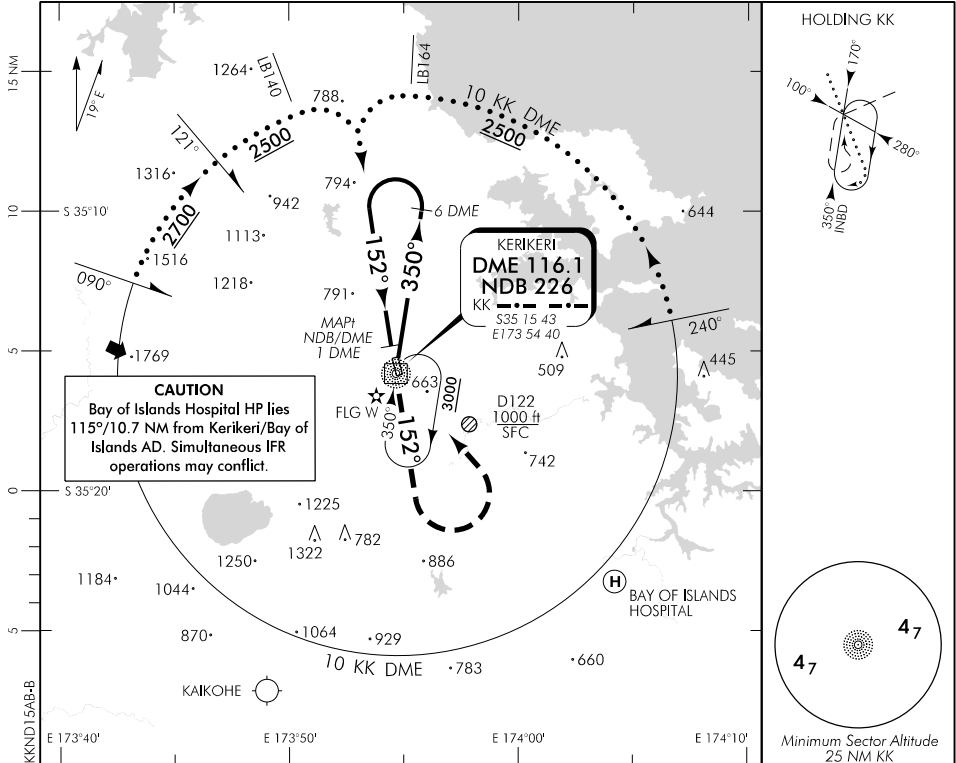
KERIKERI/BAY OF ISLANDS

RWY 15 THR ELEV 478

NDB/DME RWY 15

CHRISTCHURCH INFORMATION: 124.1 118.5

UNATTENDED: 119.4



MISSED APCH: Track 152° to 2500, turn LEFT direct to KK NDB 3000

KK DME DIST	10	9	8	7	6	5	4	3	2.6	MAPt 1
Advisory Altitude 5%	3350	3050	2750	2450	2150	1850	1550	1250	MDA	MDA
Category	A			B			C		D	
NDB/DME	1130(652) – 2500									
Circling	1280(788) – 2800									

Effective: 20 JUL 17

KERIKERI/BAY OF ISLANDS NDB/DME RWY 15

Changes from 31 JUL 08: Bay of Islands Hospital HP and caution note added, minima, missed approach text, profile, MSA 25 NM, advisory ALT table.

ELEV 492

CAT A,B

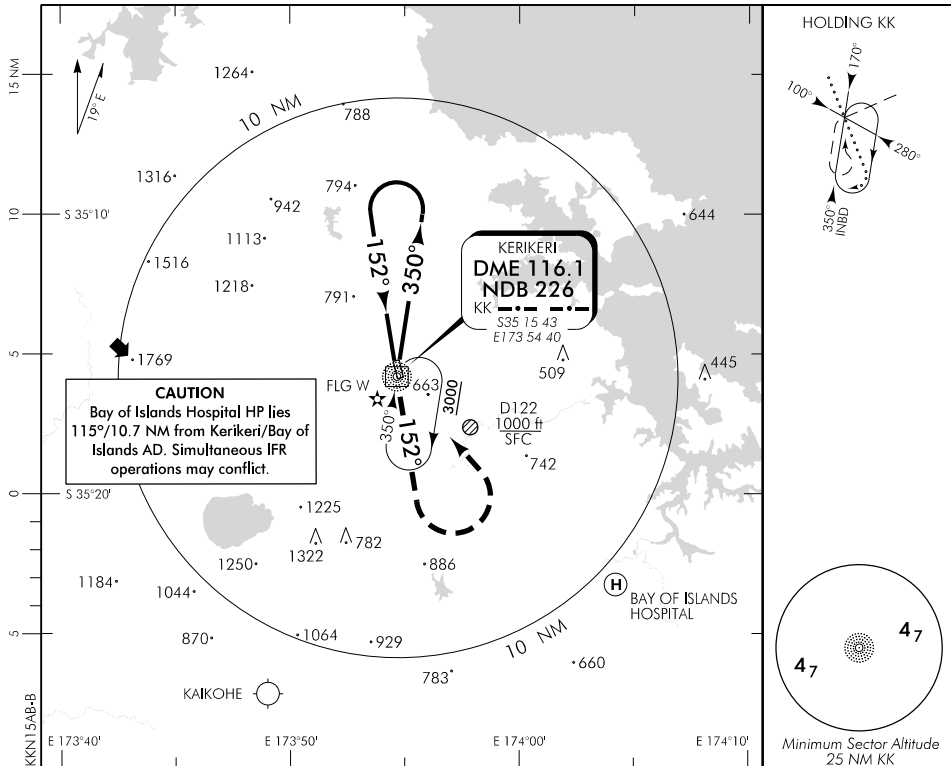
KERIKERI/BAY OF ISLANDS

RWY 15 THR ELEV 478

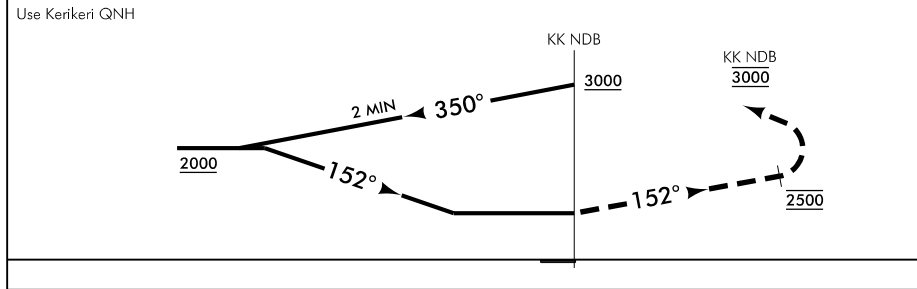
NDB RWY 15

CHRISTCHURCH INFORMATION: 124.1 118.5

UNATTENDED: 119.4



Changes from 31 JUL 08: Bay of Islands Hospital HP and caution note added; minima, missed approach text, profile, MSA 25 NM.



MISSED APCH: Track 152° to 2500, turn LEFT direct to KK NDB 3000

Category	A	B	C	D
NDB	1290(812) – 2800			
Circling	1290(798) – 2800			NA

Effective: 20 JUL 17

KERIKERI/BAY OF ISLANDS

NDB RWY 15