

ELEV 492

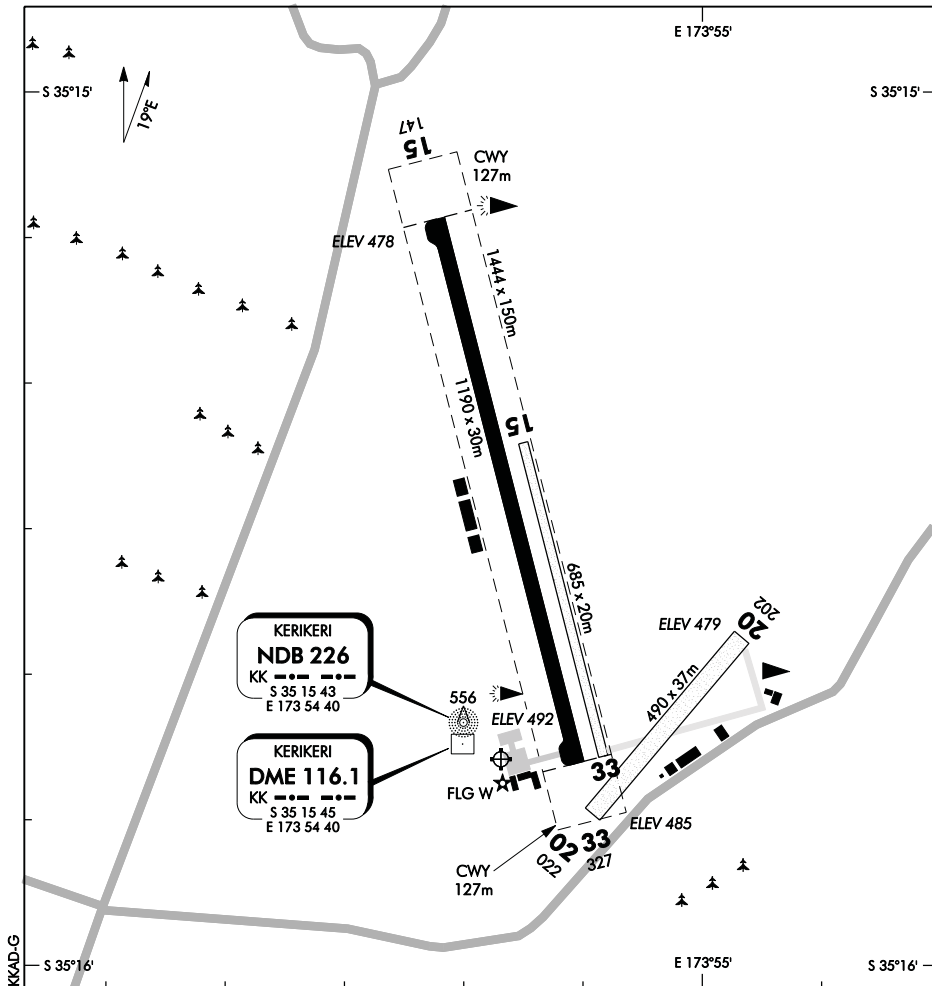
KERIKERI/BAY OF ISLANDS

NZKK

AERODROME

CHRISTCHURCH INFORMATION: 124.1 118.5

UNATTENDED: 119.4



Changes from 7 APR 11: Text change.

1. Grass taxiways suitable light aircraft only.
2. Avoid harsh braking on the runway.
3. U-turns by ACFT heavier than 5700 kg MCTOW permitted only in turning bays at end of paved RWY.
4. Simultaneous operations on parallel paved and grass runways are prohibited. Aircraft are **not** to enter the grass RWY 15/33 while aircraft are landing or taking off on the parallel paved RWY 15/33.
5. No parking closer to RWY 15/33 than the white tyre line on the west side.

S 35 15 46 E 173 54 43

KERIKERI/BAY OF ISLANDS**Effective: 2 APR 15**

© Civil Aviation Authority

AERODROME

NZKK

OPERATIONAL DATA**RWY**

RWY	SFC	Strength	Gp	Slope	ASDA	Take-off distance					LDG DIST
						1:20	1:30	1:40	1:50	1:62.5	
15 15	B	PCN 15 F/B/Y/U	8	0.36U	1190	1190			1190 1317*	1190 1317*	1190
33	B	PCN 15 F/B/Y/U	8	0.36D	1190	1190			1317	1317	1190
15 33	Gr	ESWL 1020	5	0.36U 0.36D	685	685					685
02 02	Gr	ESWL 1020	3 2	0.3D	490	490					490
20 20	Gr	ESWL 1020	2 3	0.3U	490	490					490

*Allows for clearance 127 m.

MINIMA

IFR Take-off		
RWY	Day	Night
15	300-1500	500-3000
33	300-1500	500-3000

LIGHTING

PAL 119.4 Standard operation — transmit 5 pulses within 3 seconds. PAPI, vector changes and intensity modes cycled by 5 pulses within 3 seconds, with the last pulse to be continuous.

Runway: 15/33 PAPI 3.0°/TCH 50, LIL RWY
Turning bay edge blue
Taxiway and apron edge

Aerodrome ABN FLG W, WDI

Standby power available.

FACILITIES

Fuel: Avgas 100, BP Swipecard
Z Aviation Jet A1, Avgas 100, Access via Z card

Passenger.

RFS: Fire extinguisher located in terminal area and at fuel pumps.

Vehicle access restricted outside scheduled air service hours, except by prior arrangement.

SUPPLEMENTARY

Operator: Far North Holdings Ltd, c/- Postal Centre, Opua 0241
Tel/Fax (09) 407 6133 or (027) 556 6470

Available for general use without the permission of the operator.

Landing fees payable.