

ELEV 492

CAT A,B,C

KERIKERI/BAY OF ISLANDS

NZKK

DEPARTURES RWY 15

CHRISTCHURCH INFORMATION: 124.1 118.5

UNATTENDED: 119.4

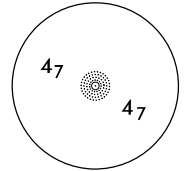
ALL DEPARTURES

Note 1. Minimum net climb gradient 3.3% (200 ft/NM)

CAUTION: Close-in obstacles not considered in climb gradient.

– Tree 521 ft AMSL 120°/265 m from RWY end.

Contact CHRISTCHURCH INFORMATION for clearance and traffic information prior to entering IMC or controlled airspace.



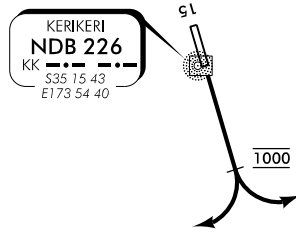
Minimum Sector Altitude
25 NM KK

DEPARTURES RWY 15

PAKARAKA TWO DEPARTURE

To KOPPA

- Maintain RWY CL to 1000 ft
- Intercept track

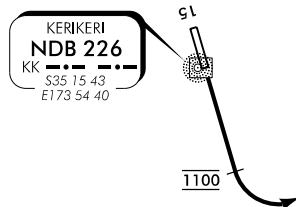


NOT TO SCALE

MOEREWA TWO DEPARTURE

To SF

- Maintain RWY CL to 1100 ft
- Turn LEFT, intercept track

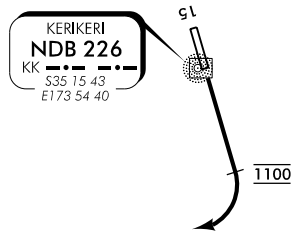


NOT TO SCALE

LAKE TWO DEPARTURE

To KAROA

- Maintain RWY CL to 1100 ft
- Turn RIGHT, intercept track



NOT TO SCALE

KKDEP15-A

New chart.

ELEV 492

CAT A,B,C

KERIKERI/BAY OF ISLANDS

NZKK

DEPARTURES RWY 33

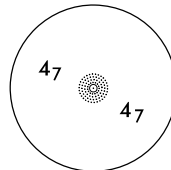
CHRISTCHURCH INFORMATION: 124.1 118.5

UNATTENDED: 119.4

ALL DEPARTURES

Note 1. Minimum net climb gradient 3.3% (200 ft/NM)

Contact CHRISTCHURCH INFORMATION for clearance and traffic information prior to entering IMC or controlled airspace.



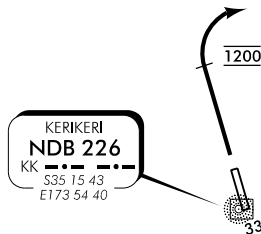
Minimum Sector Altitude
25 NM KK

DEPARTURES RWY 33

HOBSON TWO DEPARTURE

To KOPPA, SF

- Maintain RWY CL to 1200 ft
- Turn RIGHT, intercept track

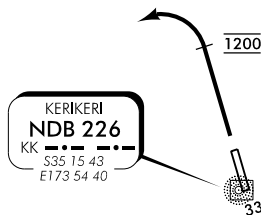


NOT TO SCALE

WAIHUKA TWO DEPARTURE

To KAROA

- Maintain RWY CL to 1200 ft
- Turn LEFT, intercept track



NOT TO SCALE

KKDEF33-A

New chart.