

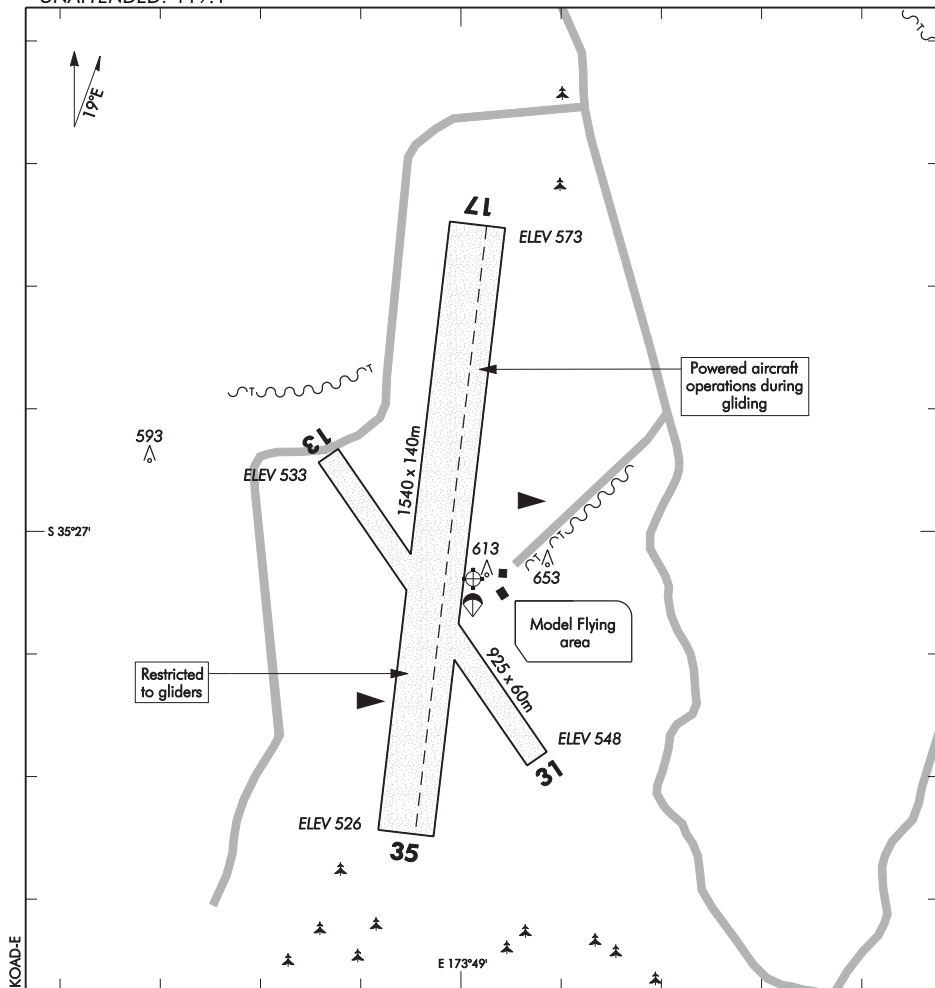
ELEV 573

NZKO

NON-CERTIFICATED

**KAIKOHE
AERODROME**

UNATTENDED: 119.1



1. Intensive gliding operations may take place on (but not restricted to) Sundays, Thursdays and public holidays.
2. Winch launching of gliders may take place with wire launches reaching up to 2500ft AGL.
3. Powered aircraft:
 - Join overhead.
 - Do not land or take-off simultaneously with a glider winch launching.
 - During gliding operations the glider strip will comprise the west side of RWY 17/35 and will be marked by a gliding arrow and an obvious strip of unmown grass. Powered aircraft use only east side of RWY 17/35 (60+m wide strip) during gliding operations.
4. Support vehicles have fluorescent orange painted bonnets. The winch is painted orange.
5. A tractor and mower may be cutting runway grass at any time. The tractor has a flashing roof light.
6. Radio controlled model aircraft may operate daily. The landing and take-off area is clearly visible from the circuit.
7. **Caution:** Skydiving operations at times from altitudes up to 12,000ft AGL. Landing area in front of old terminal. Activity broadcast on 119.1 MHz.

S 35 27 04 E 173 49 02

Effective: 30 MAY 13

© Civil Aviation Authority

**KAIKOHE
AERODROME**

NZKO

OPERATIONAL DATA**RWY**

RWY	SFC	Strength	Gp	Slope	ASDA	Take-off distance			LDG DIST
						1:20	1:30	1:40	
13 31	Gr(f)	ESWL 9080	7	0.49U 0.49D		925			925
17 35	Gr(f)	ESWL 9080	8	0.9D 0.9U		1540	1540 1465		1540

LIGHTING

Nil

FACILITIES

Nil

SUPPLEMENTARY

Operator: Far North Holdings Ltd, PO Box 7, Postal Centre, Opua 0241
Tel/Fax (09) 407 6133 or (027) 556 6470

Available for general use without the permission of the operator.

Landing fees payable.

Landing charge:	0 – 545kg	\$5.00
	546 – 1500kg	\$9.00
	1501 – 2500kg	\$15.00
	2501 – 3500kg	\$22.00

Honesty box located adjacent to club house.