

ELEV 270

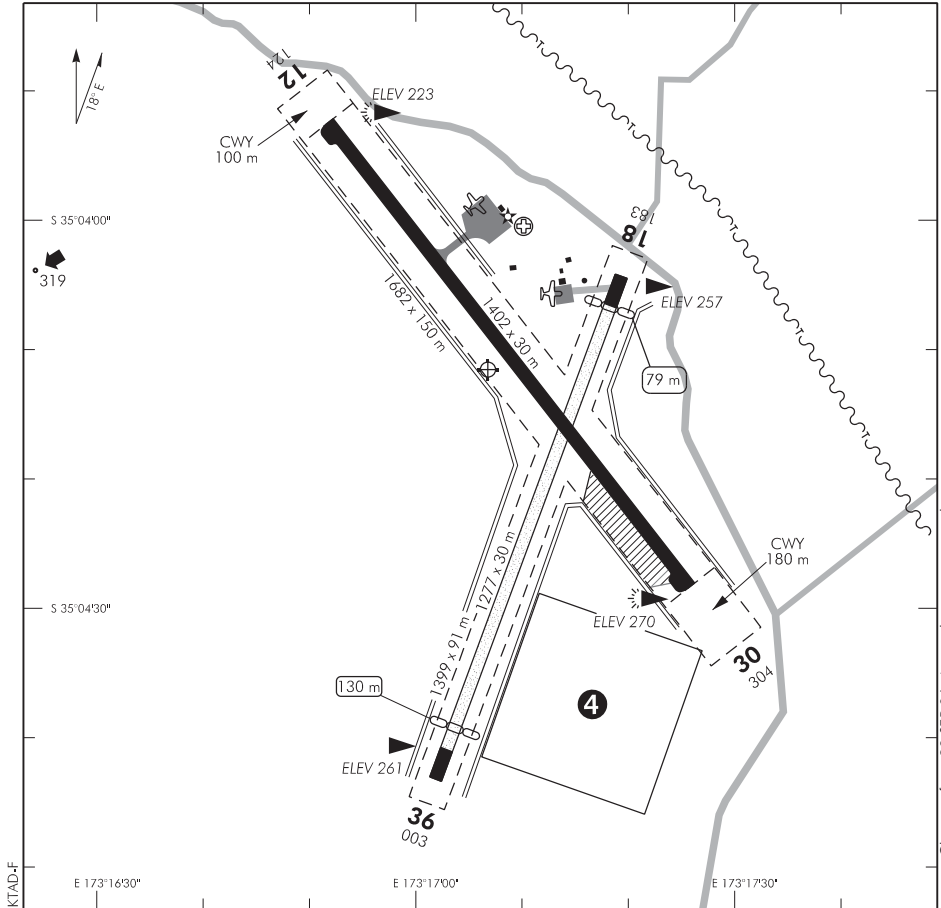
NZKT

NON-CERTIFICATED

KAITAIA**AERODROME**

CHRISTCHURCH INFORMATION: 127.1

UNATTENDED: 119.1



1. U-turns by aircraft heavier than 5700 kg MCTOW permitted only in turning bays at ends of paved runway.
2. Grass areas are permanently closed due to soft patches and ruts.
3. ☎ Nearest telephone in Awanui, 3.5 NM NNW.
4. Model aircraft flying may take place during daylight hours subject to specific prior approval of the airport operator.

S 35 04 12 E 173 17 07

Effective: 5 FEB 15

© Civil Aviation Authority

**KAITAIA
AERODROME**

Changes from 28 SEP 06: Avgas depiction removed.

NZKT

OPERATIONAL DATA**RWY**

RWY	SFC	Strength	Gp	Slope	ASDA	Take-off distance					LDG DIST
						1:20	1:30	1:40	1:50	1:62.5	
12 12	B	PCN 15 F/A/X/T	8	0.9U	1402					1402 1582*	1402
30 30	B	PCN 15 F/A/X/T	8	0.9D	1402					1402 1502#	1402
18 36	GRVL(St)	ESWL 2280	8	Nil	1277	1147 1198					1198 1147

* includes 180m CWY

includes 100m CWY

RWY 12/30 OPS by ACFT over ACN requires specific approval from the aerodrome operator.

RWY 18/36 restricted to local traffic only and not above 2500kg MCTOW.

MINIMA

IFR Take-off		
RWY	Day	Night
18/36	300-1500	NA
30	300-1500	500-3000
12	700-3000	1000-5

LIGHTING

PAL 119.1 MHz. Standard operation — Transmit 5 pulses of 0.3 second duration within 3 seconds.

RWY 12/30 LIL APAPI 3.0°/TCH 50

Turning Bay edge

Aerodrome ABN FLG W WDI

Taxiway edge

Standby power available

FACILITIES

Passenger

Fuel: Avgas 100 available by prior arrangement Tel 021 818 314.

RFS: CAT 1. Fire extinguisher located in terminal building. Available for regular air transport passenger services.

SUPPLEMENTARYOperator: Far North Holdings, PO Box 07, Opua 0241
Tel/Fax (09) 408 7233 or (021) 818 314

Available for general use without the permission of the operator.

Landing fees payable.