

ELEV 935

ROTORUA LAKEFRONT

NZLF

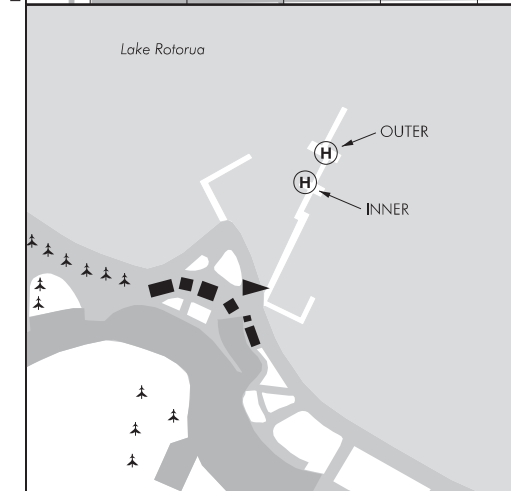
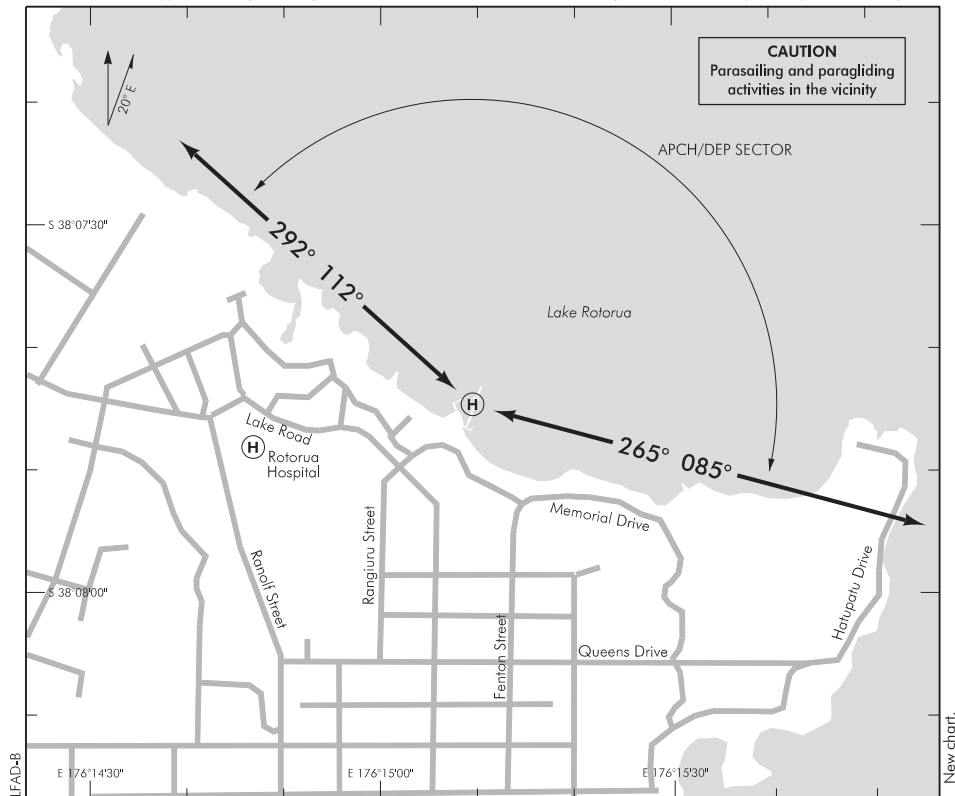
NON-CERTIFICATED

HELIPORT

ROTORUA TOWER: 121.2 120.1

ROTORUA ATIS: 128.8

UNATTENDED: 121.2



1. Heliport located within RO CTR/D.
2. Contact Volcanic Air base 130.5 MHz.
3. Obstacles:
 - Floatplanes moored or operating to and from the jetty.
 - Paddle Boat cruises operate to and from the jetty to the west, vessel height 21 ft.
4. **CAUTION:**
 - Boating activities on lake in the vicinity of the heliport.
 - Parasailing in the vicinity, ATC will advise.
 - Pedal boats/kayaks operate to the east and along the lake shore.
 - Golf Hole in One operation (GHIO) to the west.

S 38 07 46 E 176 15 10*

Effective: 29 MAR 18

© Civil Aviation Authority

**ROTORUA LAKEFRONT
HELIPORT**

FATO/TLOF

Outer Helipad

	SIZE	SFC	STRENGTH	MARKINGS
FATO	25 m (overhangs TLOF)			
TLOF	5.1 m x 10.9 m	Timber deck	2500 kg	Standard

Inner Helipad

	SIZE	SFC	STRENGTH	MARKINGS
FATO	25 m (via outer helipad FATO)			
TLOF	5 m x 5 m	Timber deck	2500 kg	Standard

LIGHTING

Nil

FACILITIES

No fuel available

SUPPLEMENTARY

Operator: Volcanic Air Safaris, PO Box 640, Rotorua
Tel (07) 348 9984

Available only with prior permission of the operator.

Landing fees apply.

Contact Volcanic Base 130.5 MHz prior to landing and departure.

Arrival — Contact Volcanic Air on base frequency no less than 2 minutes prior to arrival. If contact is not made, the approach should not be continued. Use best noise abatement procedures where possible. Approach FATO prior to maneuvering onto advised TALO. Maintain suitable clearance from all boating and parasailing activity.

Departure — Allow adequate separation from vessels inside the 200 m marker and maintain a suitable clearance from all boating and parasailing activity.

NOTE:

The importance of the arrival call is to allow GHIO operations to be halted during aircraft arrivals and departures while aircraft are within the area bound by the lakeshore, Ohinemutu Marae to the west, the 200 m channel marker, and the scout hall to the east.