

ELEV 182

NZMA

**MATAMATA****ARRIVAL/DEPARTURE**

UNATTENDED: 120.0

***Arrival Procedures*****From all routes:** VFR***Departure Procedures***

Contact Christchurch Control 125.3 MHz for clearance and traffic information prior to entering IMC or controlled airspace.

**To all routes:**

- Departure ALFA:  
Climb on track by visual reference to 4000ft.
- Departure BRAVO:  
Climb to HN VOR then set heading.
- Departure CHARLIE:  
Climb to 3000ft towards HN VOR then intercept approved track prior to first REP.



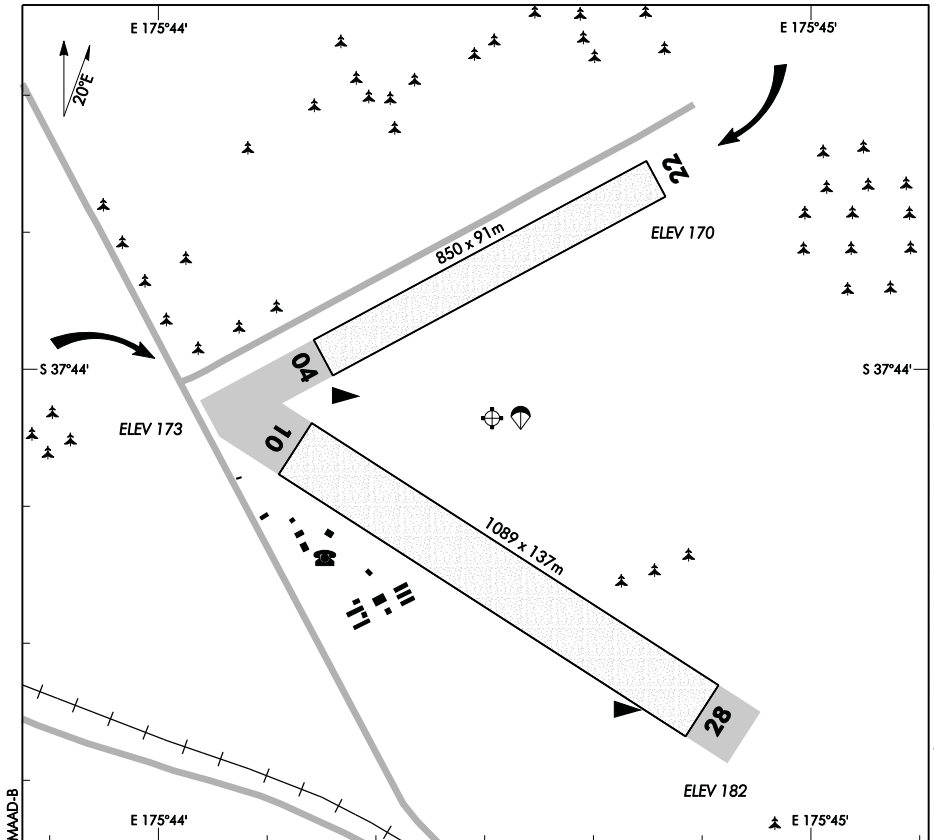
ELEV 182

NZMA

NON-CERTIFICATED

**MATAMATA  
AERODROME**

UNATTENDED: 120.0



Changes from 23 SEP 10: Overhead rejoin avoidance and PLA text.

1. Circuit Direction: RWYs 04, 28 — Left hand  
RWYs 10, 22 — Right hand
2. All pilots should avoid using the overhead join procedure at Matamata aerodrome due to parachute and gliding operations.
3. Runways may be closed at any time for grass harvest or model aircraft operations. White crosses displayed will indicate runways closed for these purposes.
4. Intensive sporting activities take place, particularly during weekends.
5. Glider Winch Launching: Operations may take place at any time. Refer to Matamata Winch Launching Chart.
6. When "Gliding Operations" marker is displayed all parachute operations will be targeted to the PLA marker.
7. A private aerodrome located approx 0.5NM north of RWY 10 threshold necessitates extra care when operating on RWYs 10, 22 and 04.
8. Enroute traffic should avoid flying through Matamata MBZ due to the presence of parachute and gliding operations.
9. Prior to start-up and taxi each pilot should make a radio call to ascertain whether there are any parachutists in the air. Aircraft within 100m of an active drop zone should have their engines turned off.
10. Aircraft and vehicles are not permitted to taxi or drive through or park inside the parachute PLA. This area is adjacent to the parachute clubrooms and marked by orange cones when in use.

S 37 44 04 E 175 44 31

**Effective: 9 FEB 12**

© Civil Aviation Authority

**MATAMATA  
AERODROME**

NZMA

**RWY**

RWY	SFC	Strength	Gp	Slope	ASDA	Take-off distance			LDG DIST
						1:20	1:30	1:40	
04 22	Gr(f)	ESWL 6350	8	Nil	850	850			850
10 28	Gr(f)	ESWL 6350	8	0.55U 0.55D	1089	1089			1089

**LIGHTING**

Nil

**FACILITIES**

Fuel: BP Avgas 100, Swipecard  
Matamata Aero Club, Tel (07) 888 8011

**SUPPLEMENTARY**

Operator: Matamata Piako District Council, PO Box 266, Te Aroha  
Tel (07) 884 0060 Fax (07) 884 8865

Details on activities associated with the aerodrome can be obtained by contacting the appropriate operator:

Gliding: Tel (07) 888 5972  
Sky Diving: Tel (029) 759 3483  
Aero Club: Tel (07) 888 8782

For general information and events at Matamata aerodrome refer to:

[www.mpdc.govt.nz/our-facilities/98.html](http://www.mpdc.govt.nz/our-facilities/98.html)

Available for aerial work or air transport operations subject to prior agreement of the operator.

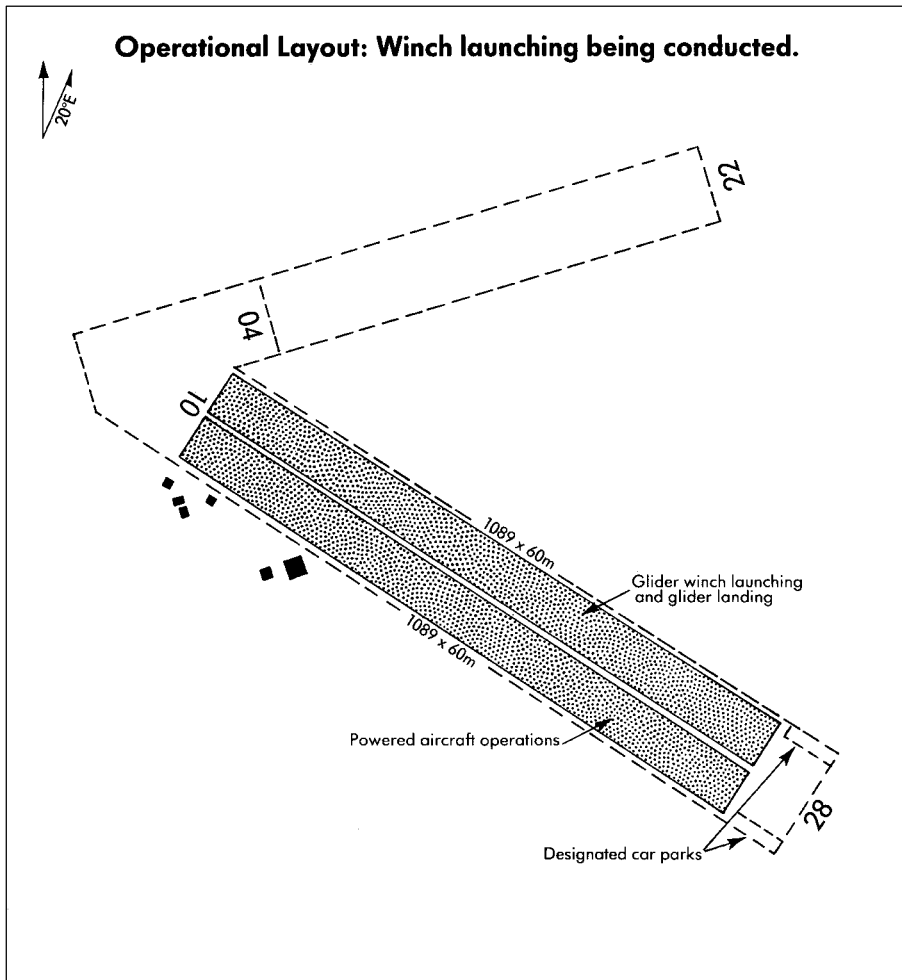
Landing fees charged through Greasr only — late payments incur an admin fee.

By landing at NZMA you agree to our Terms and Conditions of Use — these can be found in full at [www.Greasr.com/ad/nzma](http://www.Greasr.com/ad/nzma)

ELEV 182  
NZMA

# MATAMATA WINCH LAUNCHING

UNATTENDED: 120.0



Changes from 27 NOV 03: AWIB removed.

1. When RWY 10/28 is being used for winch launching a row of cone markers will be placed along the centreline.
2. The threshold of RWY 28 is 130 metres from the boundary fence and cars involved in glider operations may be parked in the designated parking areas. In transit they are required to give way to aircraft traffic and to remain adjacent to the southern boundary of the runway.
3. Powered aircraft operations are restricted to the southern side of RWY 10/28, and winch launching operations are restricted to the northern side.
4. Winch launching may not commence at any time when it could result in conflict with other traffic or when parachutes are in descent.
5. Gliders may land on the southern side of the runway but must be moved clear immediately upon completion of the landing roll.
6. All parachute descents must be targeted to the PLA active marker.

Effective: 23 SEP 10

