

ELEV 5

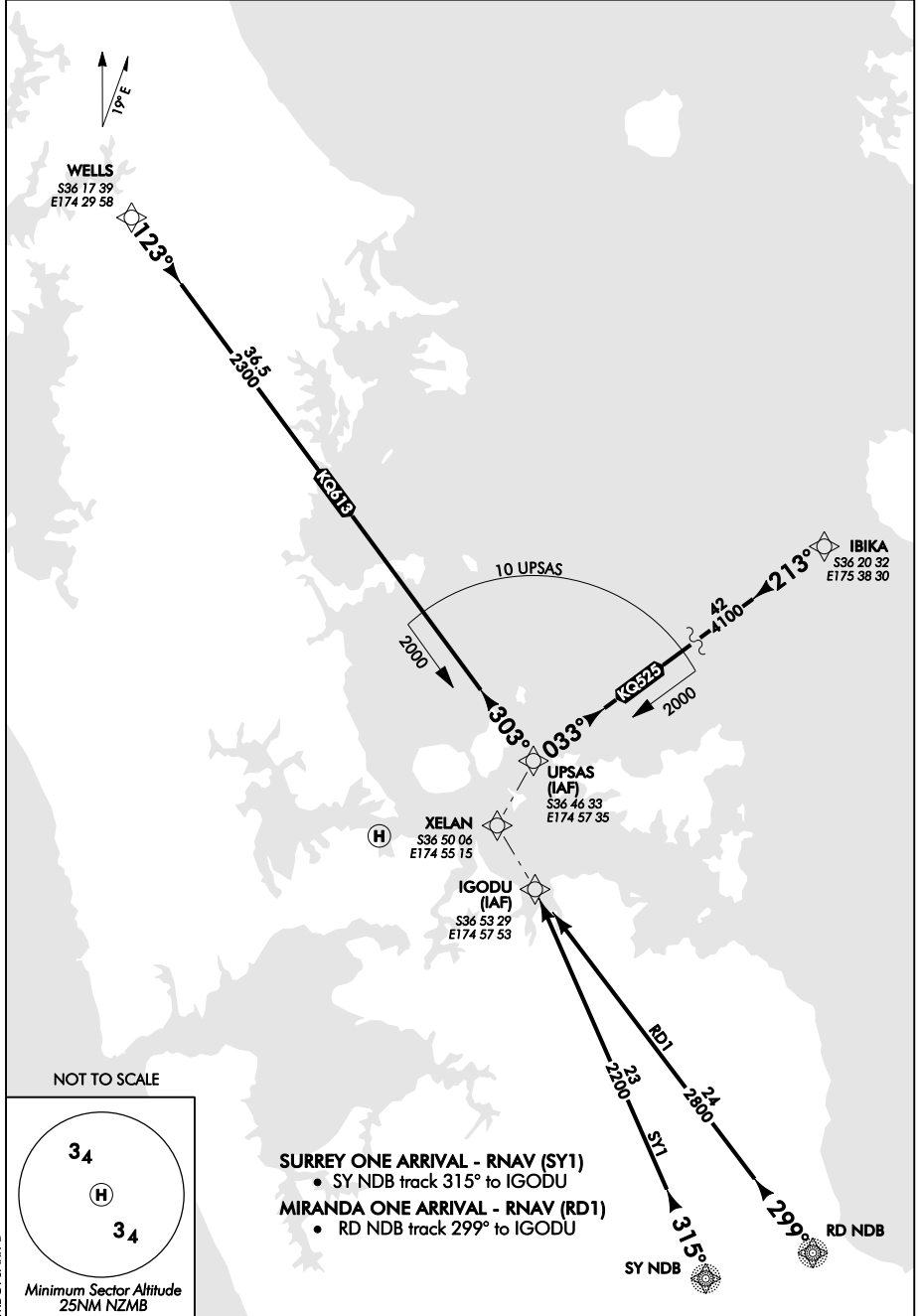
CAT H

MECHANICS BAY

NZMB

RNAV (GNSS) ARRIVAL

AUCKLAND CONTROL: 124.3 129.6 WP TWR: 134.5 119.9 WP ATIS: 128.3 CITY: 120.4



AMEGPSARR-D

Changes from 11 FEB 10: MAG VAR.

Effective: 5 APR 12

MECHANICS BAY RNAV (GNSS) ARRIVAL

ELEV 5

CAT H

MECHANICS BAY

NZMB

RNAV (GNSS) 248

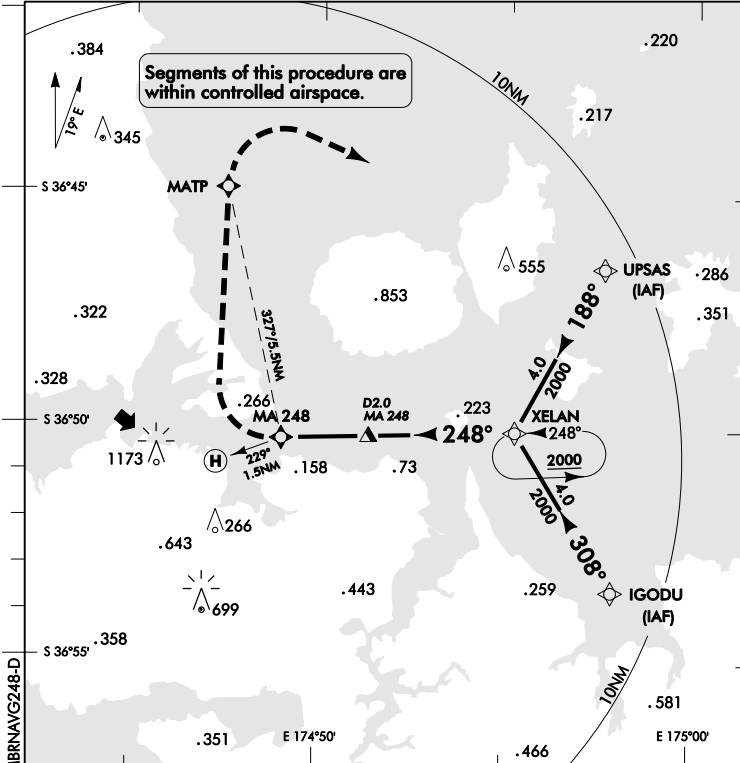
AUCKLAND CONTROL: 124.3 129.6 WP TWR: 134.5 119.9 WP ATIS: 128.3 CITY: 120.4

TONM

5

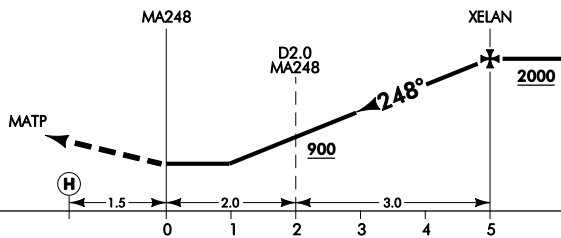
0

5



MBRNAVG248-D

Use Whenuapai QNH



MISSED APCH: Climbing RIGHT turn, track direct to MATP, thence to UPSAS 2000

DISTANCE TO WPT	MA248	1	2	3	4	XELAN			
Advisory Altitude 6.5%	MDA	800	1200	1600	2000	2400			
Category	H								
LNAV	510(505) - 2800								

Report to Control when able to proceed by visual reference or VFR, and when commencing missed approach.

Changes from 11 FEB 10: MAG VAR.

Effective: 5 APR 12

ELEV 5

NZMB

NON-CERTIFICATED

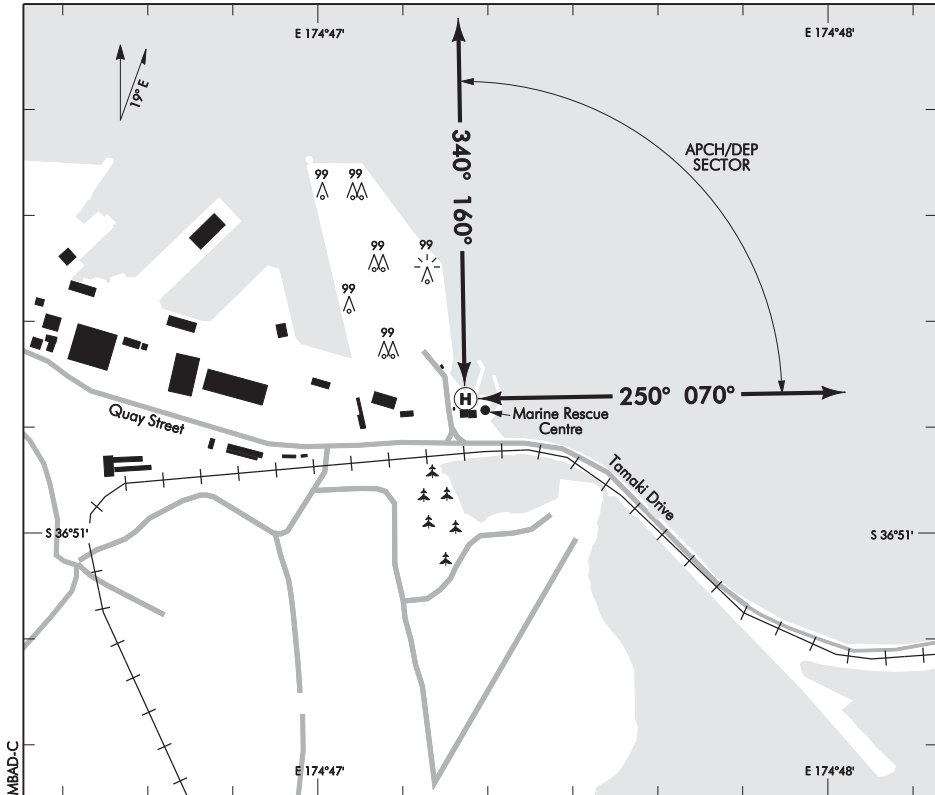
MECHANICS BAY

HELIPORT

CITY TRAFFIC: 120.4

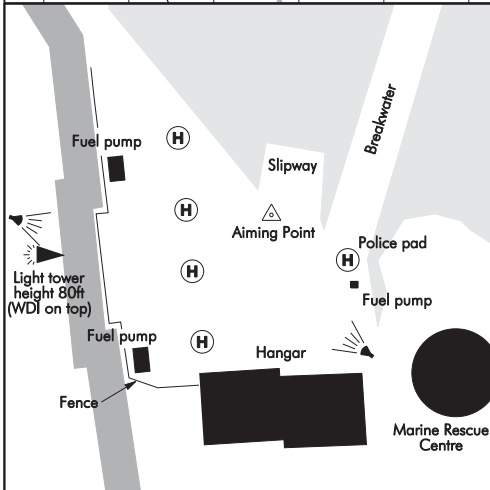
ATIS AUCKLAND: 127.8

ATIS WHENUAPAI: 128.3



MBAD-C

Changes from 11 FEB 10; Police pad and associated restriction added.



1. Mechanics Bay base 120.4 MHz.
2. Noise Abatement: Pilots shall observe the Auckland Noise Abatement chart and avoid overflying adjacent residential areas.
3. Obstacles: Light tower and WDI 80ft AGL SW 37m SW of TLOF centre. Hangar 26ft AGL 28m south side of landing pad.
4. **CAUTION:** Turbulence may be experienced from buildings, shipping containers and harbour breakwaters.
5. Police pad restricted to Police operations only.

Arrival — Descend remaining clear of populous areas to harbour centre to commence approach. Approach to aiming point located on slipway. Proceed to landing markings located parallel to fence.

Departure — Maintain best rate of climb to harbour centre then track as required to remain clear of populous areas until able to maintain adequate terrain clearance.

S 36 50 48 E 174 47 19*

Effective: 6 FEB 14

© Civil Aviation Authority

MECHANICS BAY
HELIPORT

FATO/TLOF

	SIZE	SFC	STRENGTH	MARKINGS
FATO	27m x 27m	B	6000	Standard
TLOF	5m x 5m	B	6000	Standard

Maximum helicopter size 13.36m overall length.

MINIMA

IFR Take-off	
Day	Night
500* - 1500	

*Unless higher required by the departure procedure flown

LIGHTING

Floodlighting

WDI

FACILITIES

Passenger reception, restaurant, toilet facilities, passenger embarking/disembarking available by prior arrangement.

Z Energy Jet A1, Access via Z Card.

SUPPLEMENTARY

Operator: Helilink Limited, PO Box 3271, Auckland
Tel (09) 377 4406 Fax (09) 377 4597
Email: info@inflitecharters.com

Mechanics Bay Heliport is available with prior telephone approval only. Refer operator details above for contact telephone numbers. Heliport operating procedures are available on request and all users are required to comply with these.

Operating hours:

Summer Hours (NZDT) — Strictly 0700 to 2100 only
Winter Hours (NZST) — Strictly 0700 to 1900 only

ELEV 5

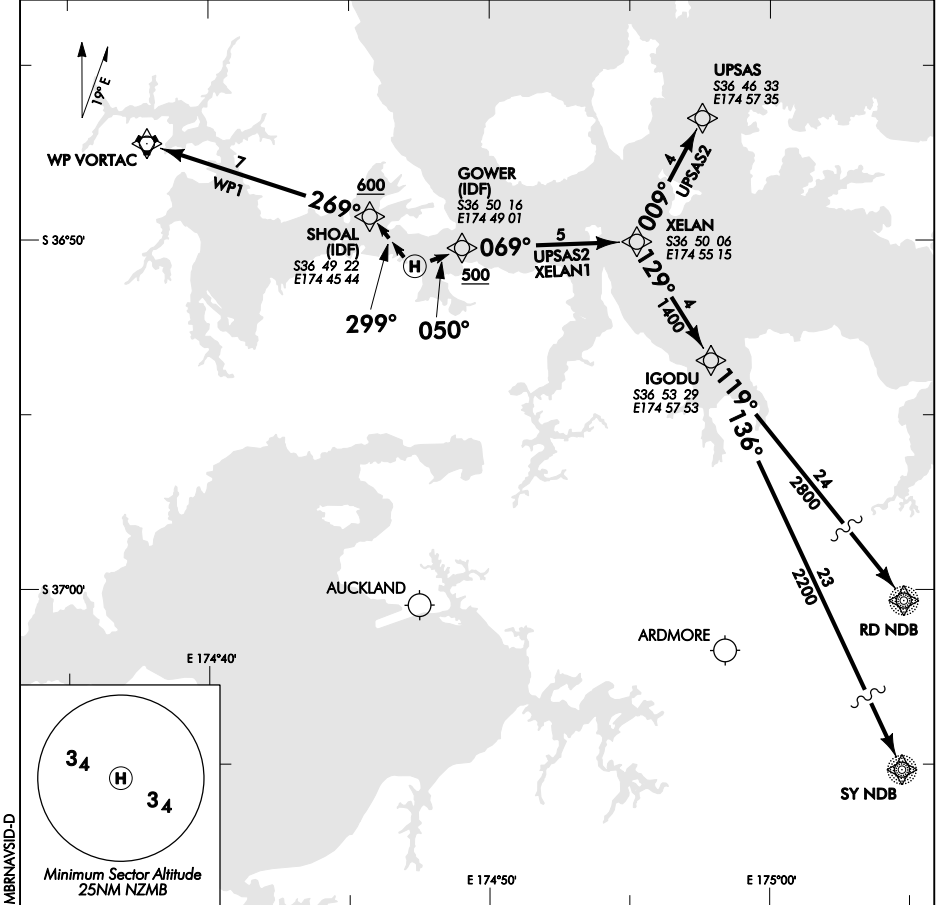
CAT H

MECHANICS BAY

NZMB

RNAV (GNSS) SID

AUCKLAND CONTROL: 124.3 129.6 WP TWR: 134.5 119.9 WP ATIS: 128.3 CITY: 120.4



MBRNAVSID-D

Changes from 7 APR 11: XELAN1, UPSAS2 departures, SY NDB and RD NDB transitions, MAG VAR.

ALL DEPARTURES

Prior to departure obtain pre-flight clearance and traffic information from Christchurch Information 118.5 MHz or Auckland Control (Ground) 129.5 MHz or Tel 0800 626 756 (landline users only) or 0900 62 675 (cellphone users).
 Maintain own terrain clearance by visual reference to initial departure fix (IDF).
 Minimum net climb gradient 5% (300ft/NM) from IDF.

MINIMUM ONE DEPARTURE – RNAV (XELAN1)

- Track 050° to GOWER (IDF)
- Cross GOWER at MNM 500ft
- Track 069° to XELAN

UPSAS TWO DEPARTURE – RNAV (UPSAS2)

- Track 050° to GOWER (IDF)
- Cross GOWER at MNM 500ft
- Track 069° to XELAN
- Track 009° to UPSAS

WHENUAPAI ONE DEPARTURE – RNAV (WP1)

- Track 299° to SHOAL (IDF)
- Cross SHOAL at MNM 600ft
- Track 269° to WP

TRANSITIONS

SURREY TRANSITION

- XELAN track 129° to IGODU
- Track 136° TO SY NDB

MIRANDA TRANSITION

- XELAN track 129° to IGODU
- Track 119° TO RD NDB

Effective: 5 APR 12

