

ELEV 10

MILFORD SOUND

NZMF

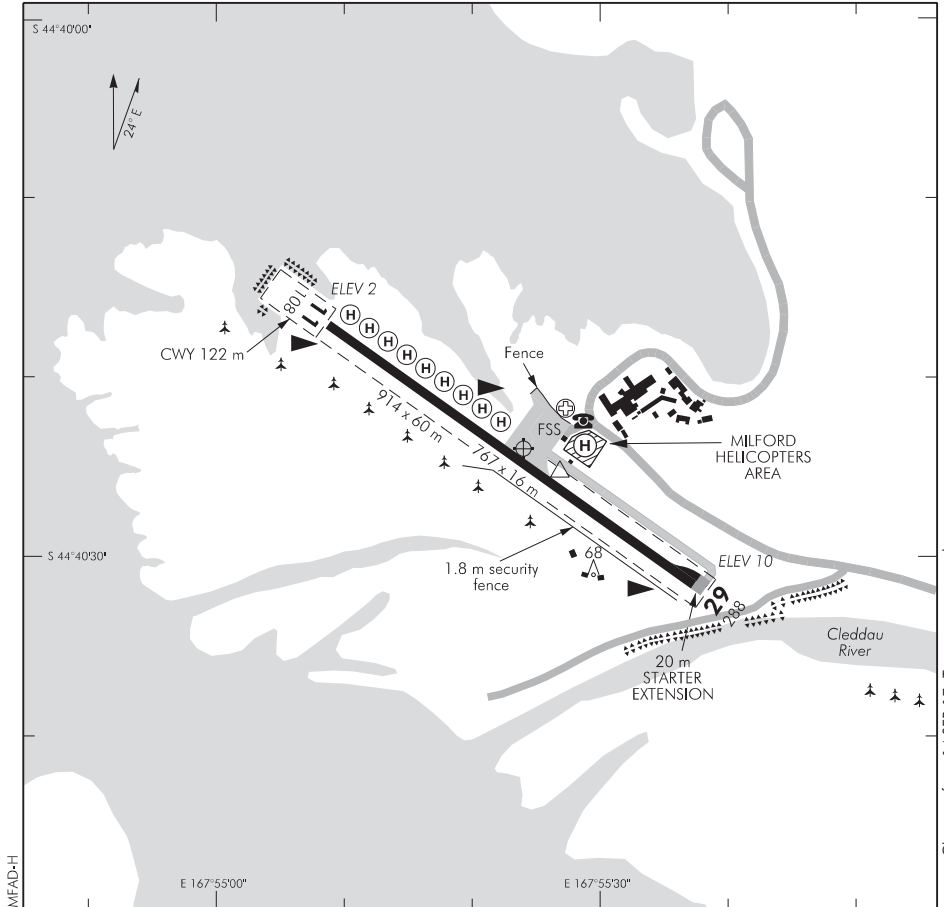
NON-CERTIFICATED

AERODROME

FLIGHT SERVICE: 118.2

COLLISION AVOIDANCE: 119.2

UNATTENDED: 118.2



1. All aircraft operations confined to sealed runway and taxiway. Stay off grass. Surface very soft.
2. Parking: To preserve side clearance, no part of an aircraft shall be closer to the runway centreline than the runway holding position marking.
3. Aircraft must have serviceable radio equipment capable of two-way communication on Milford Flight Service and collision avoidance frequencies.
4. Refer also to Milford Sound Procedures and Location Chart.
5. **CAUTION:**
 - Marked windshear in NW and S wind conditions over 15 kt.
 - Stop bank at SE boundary of aerodrome.
 - High trees on south side of Cleddau River 350 m from RWY 29 THR.
 - Take-off RWY 11: Exercise extreme caution due to restricted flight path, rising terrain and down draughts.

D

S 44 40 24 E 167 55 24*

Effective: 23 MAY 19

© Civil Aviation Authority

**MILFORD SOUND
AERODROME**

NZMF

RWY

RWY	SFC	Strength	Gp	Slope	ASDA	Take-off distance			LDG DIST
						1:20	1:30	1:40	
11	B	ESWL 2730	6	0.46U		767			767
29 29	B	ESWL 2730	7 6	0.46D		909*			767

* Includes 20 m starter extension

MINIMA

VFR		
	Day	Night
Fixed wing	1500-8	NA
Helicopter	600-1500	NA

LIGHTING

Nil

FACILITIES

As briefed.

RFS: Fire extinguishers located inside the base of the control tower. Available during flight service hours or by prior arrangement.

SUPPLEMENTARYOperator: Ministry of Transport, PO Box 3175, Wellington
Tel (04) 439 9354 Fax (04) 439 9004
www.transport.govt.nz/ourwork/air/nzmf

Available for general use without the permission of the operator.

Pilot briefing required. See Arrival/Departure pages.