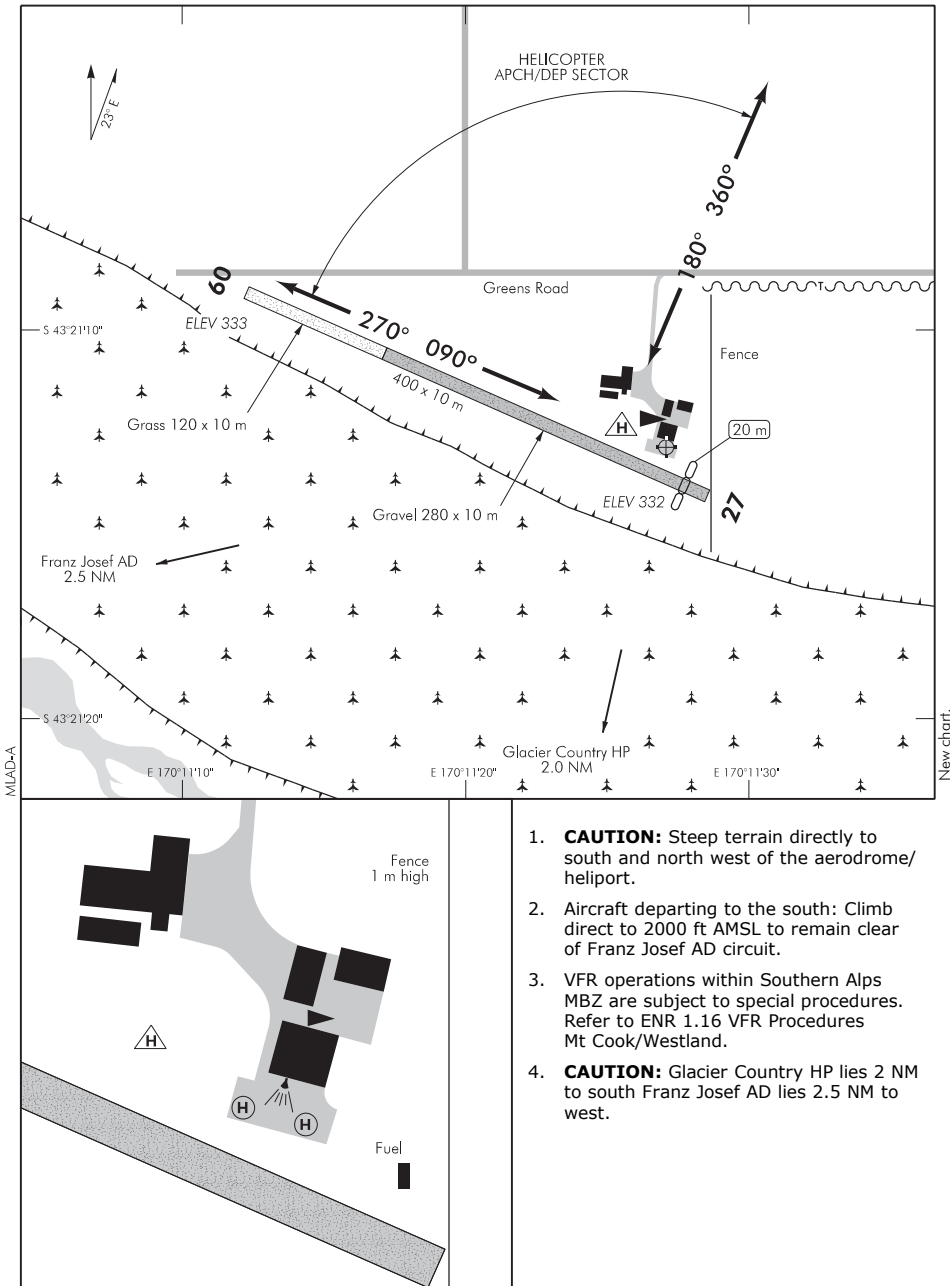


ELEV 333  
NZML

NON-CERTIFICATED

**MID WAIHO LOOP  
AERODROME**

ALPS TRAFFIC/UNATTENDED: 118.6



1. **CAUTION:** Steep terrain directly to south and north west of the aerodrome/heliport.
2. Aircraft departing to the south: Climb direct to 2000 ft AMSL to remain clear of Franz Josef AD circuit.
3. VFR operations within Southern Alps MBZ are subject to special procedures. Refer to ENR 1.16 VFR Procedures Mt Cook/Westland.
4. **CAUTION:** Glacier Country HP lies 2.0 NM to south Franz Josef AD lies 2.5 NM to west.

S 43 21 13 E 170 11 27\*

**Effective: 24 MAY 18**

© Civil Aviation Authority

**MID WAIHO LOOP  
AERODROME**

NZML

**RWY**

RWY	SFC	Strength	Gp	Slope	ASDA	Take-off distance			LDG DIST
						1:20	1:30	1:40	
09	GRVL/Gr		1 2	Nil		380			400
27	GRVL/Gr		2 1	Nil		400			380

**FATO/TLOF**

	SIZE	SFC	STRENGTH	MARKINGS
FATO	20 m x 20 m	Gr		Nil
TLOF	20 m x 20 m	Gr		Nil

**LIGHTING**

Hangar floodlighting

**FACILITIES**

Fuel: Jet A1 by prior arrangement with operator

**SUPPLEMENTARY**

Operator: Glacier Country Helicopters  
 PO Box 131  
 Franz Josef Glacier 7856  
 Tel 021 896 502 or (03) 752 0688

Available for use strictly subject to prior approval (and briefing) by the aerodrome operator.