

ELEV 97

NEW PLYMOUTH

NZNP

ARRIVAL

TOWER: 124.7 125.4

ATIS: 127.05

UNATTENDED: 124.7

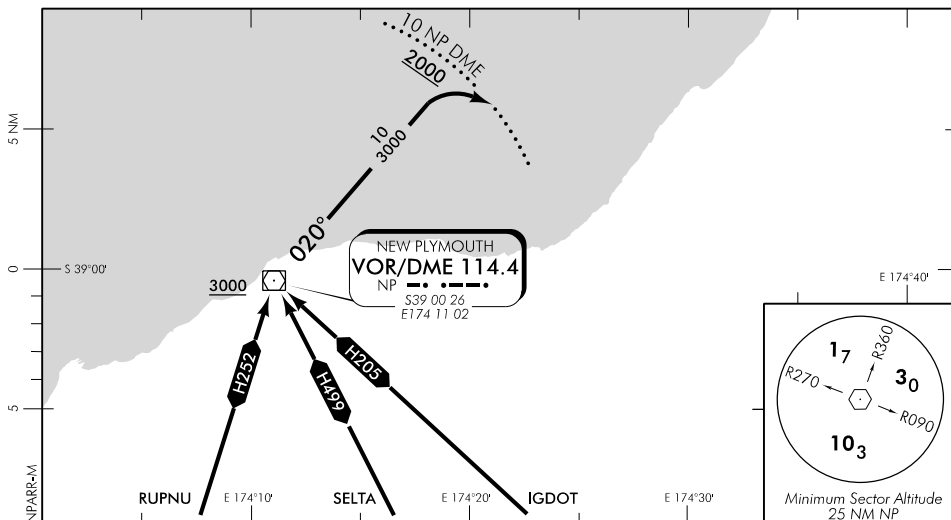
Instrument Training Operations:

Due to traffic congestion at times, all instrument training operations must be pre-coordinated by telephone with the New Plymouth ATC duty controller. Instrument training is not available 0900–1030 MON–FRI local time.

Note: The minimum levels of the DME arc and NP VOR/DME holding patterns are not totally contained within controlled airspace

NEW PLYMOUTH TWO ARRIVAL (NP2)

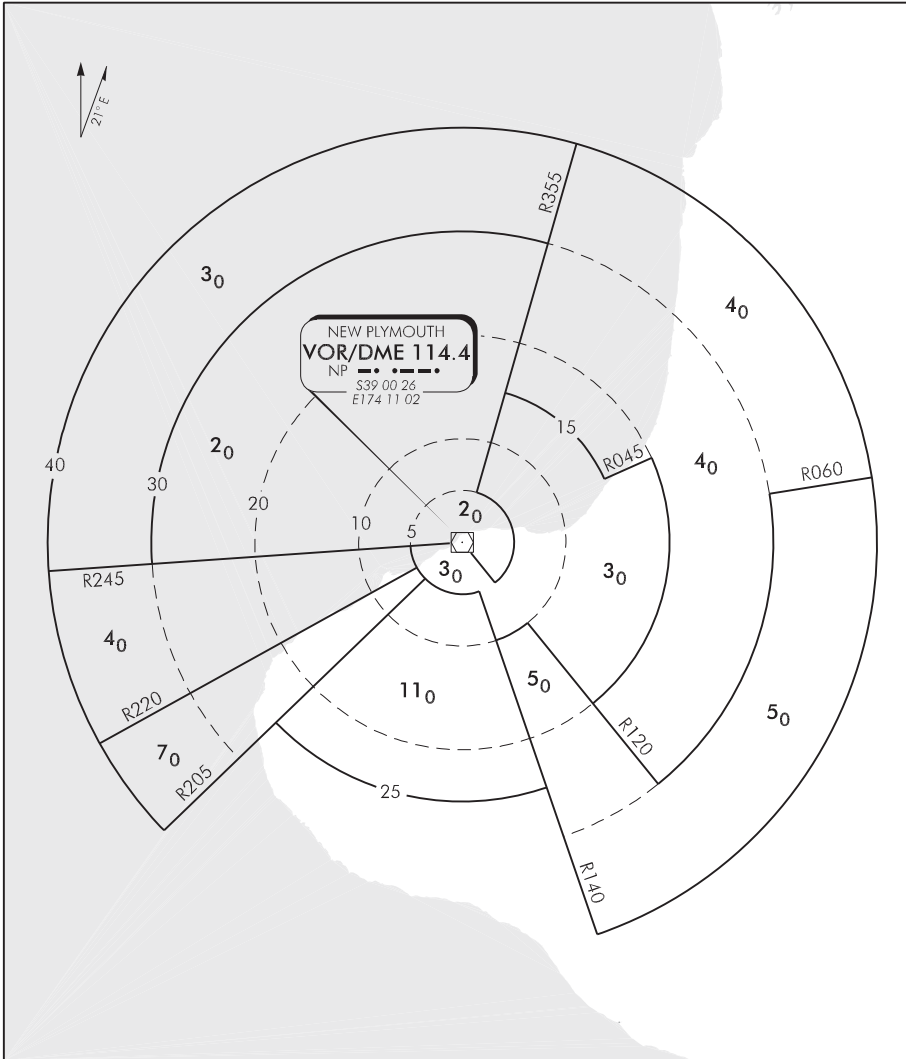
- Crossing NP VOR descend as cleared to not below 3000 ft
- Track outbound R020 to join NP 10 DME arc for VOR/DME RWY 23 approach



Changes from 23 JUL 15: H352 removed.

Effective: 9 NOV 17

NEW PLYMOUTH VOR/DME MRA SECTORS (VORSEC)



NP/VORSEC

Changes from 4 SEP 03: R045 label added.

Effective: 7 JUL 05