

ELEV 97

CAT A,B,C

# NEW PLYMOUTH

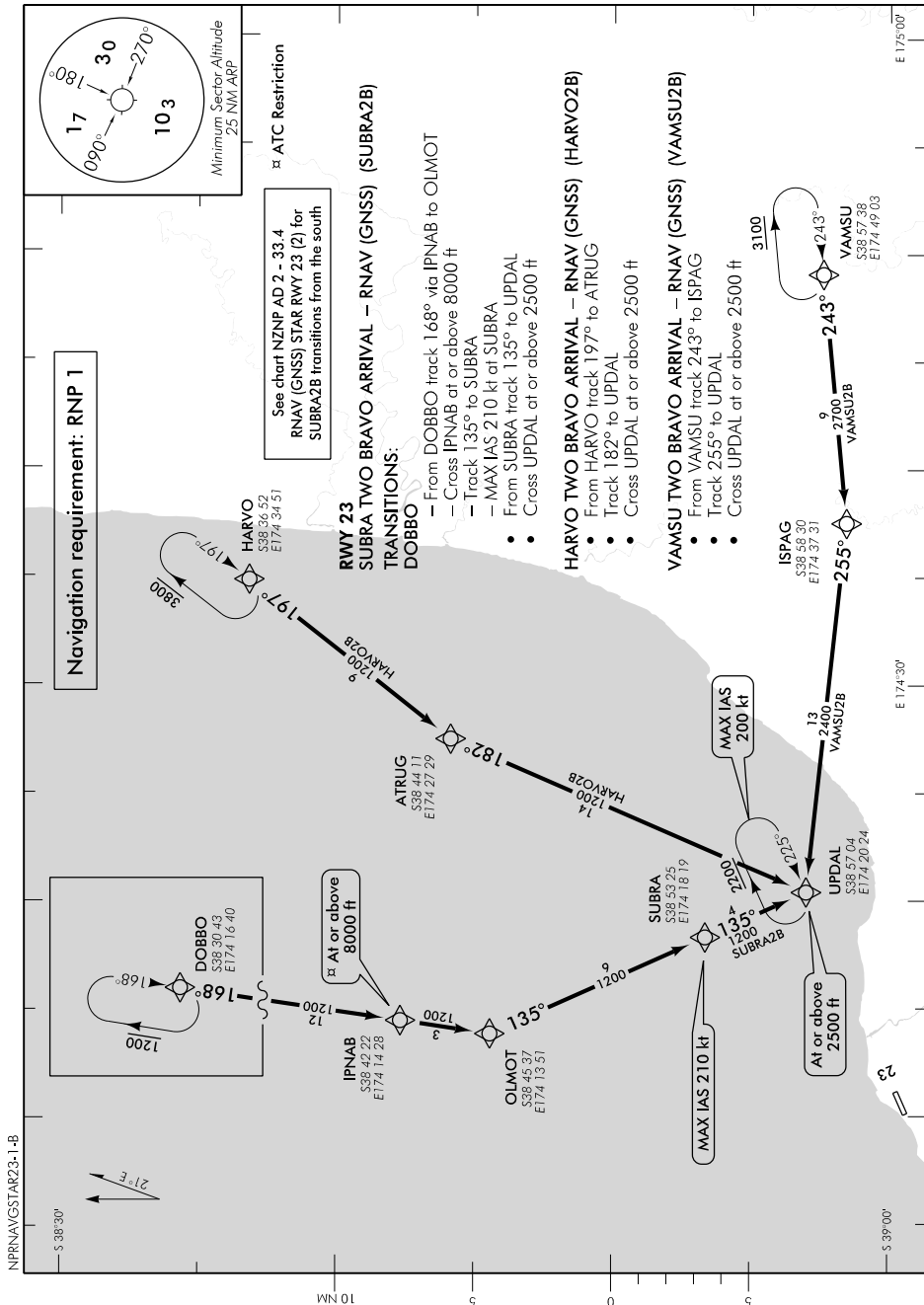
NZNP

## RNAV (GNSS) STAR RWY 23 (1)

TOWER: 124.7 125.4

ATIS: 127.05

UNATTENDED: 124.7



Effective: 19 JUL 18

ELEV 97

CAT A,B,C

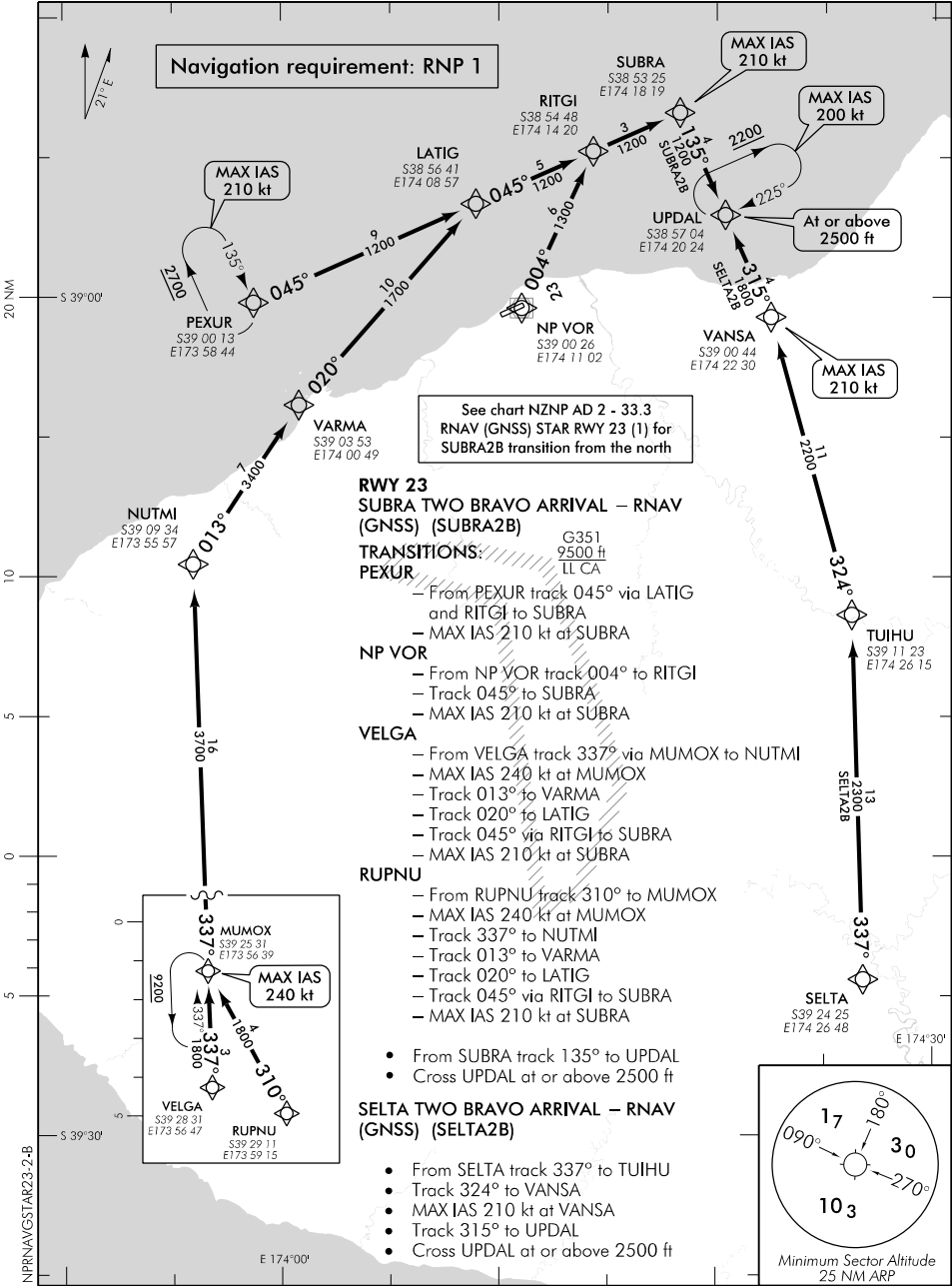
NZNP

# NEW PLYMOUTH RNAV (GNSS) STAR RWY 23 (2)

TOWER: 124.7 125.4

ATIS: 127.05

UNATTENDED: 124.7



Navigation requirement: RNP 1

MAX IAS 210 kt

MAX IAS 210 kt

MAX IAS 200 kt

At or above 2500 ft

MAX IAS 210 kt

See chart NZNP AD 2 - 33.3  
RNAV (GNSS) STAR RWY 23 (1) for  
SUBRA2B transition from the north

### RWY 23 SUBRA TWO BRAVO ARRIVAL – RNAV (GNSS) (SUBRA2B)

#### TRANSITIONS: PEXUR

- From PEXUR track 045° via LATIG and RITGI to SUBRA
- MAX IAS 210 kt at SUBRA

#### NP VOR

- From NP VOR track 004° to RITGI
- Track 045° to SUBRA
- MAX IAS 210 kt at SUBRA

#### VELGA

- From VELGA track 337° via MUMOX to NUTMI
- MAX IAS 240 kt at MUMOX
- Track 013° to VARMA
- Track 020° to LATIG
- Track 045° via RITGI to SUBRA
- MAX IAS 210 kt at SUBRA

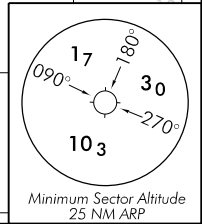
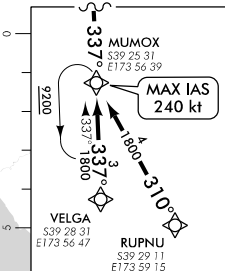
#### RUPNU

- From RUPNU track 310° to MUMOX
- MAX IAS 240 kt at MUMOX
- Track 337° to NUTMI
- Track 013° to VARMA
- Track 020° to LATIG
- Track 045° via RITGI to SUBRA
- MAX IAS 210 kt at SUBRA

- From SUBRA track 135° to UPDAL
- Cross UPDAL at or above 2500 ft

### SELTA TWO BRAVO ARRIVAL – RNAV (GNSS) (SELTA2B)

- From SELTA track 337° to TUIHU
- Track 324° to VANSAN
- MAX IAS 210 kt at VANSAN
- Track 315° to UPDAL
- Cross UPDAL at or above 2500 ft



Changes from 9 NOV 17: UPDAL crossing altitude.