

ELEV 97

CAT A,B,C

NEW PLYMOUTH

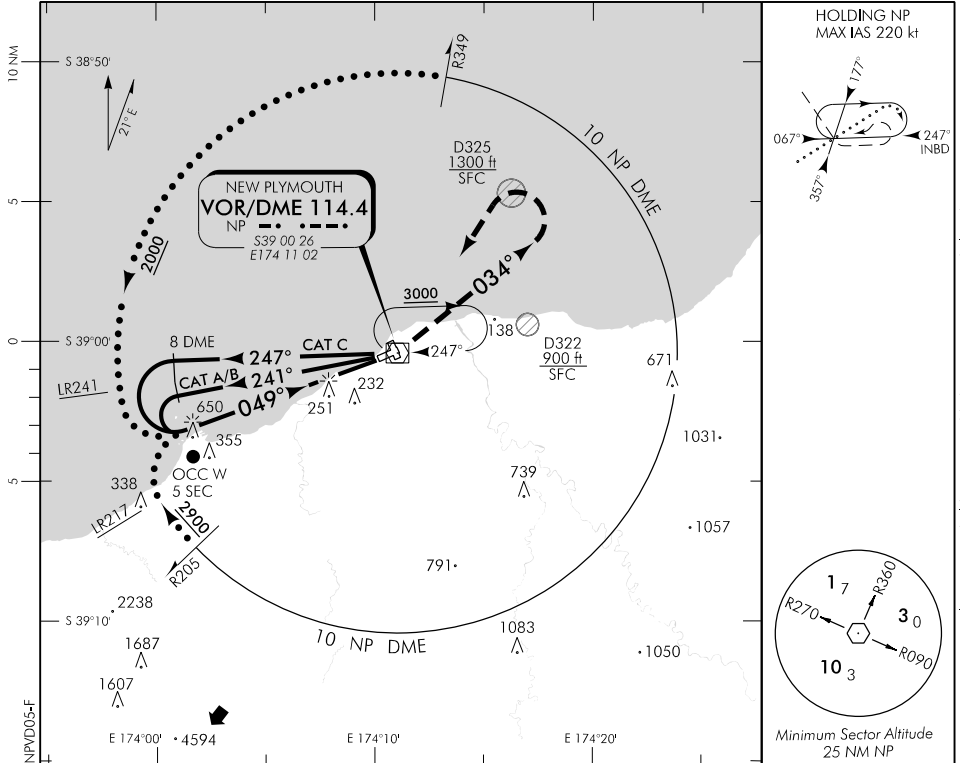
RWY 05 THR ELEV 89

VOR/DME RWY 05

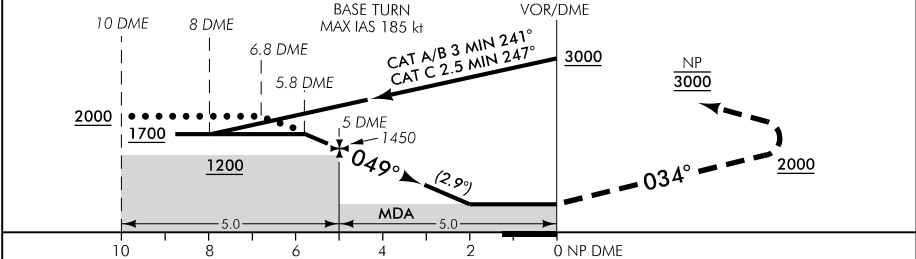
TOWER: 124.7 125.4

ATIS: 127.05

UNATTENDED: 124.7



Use New Plymouth QNH



MISSED APCH: Track 034° to 2000, turn LEFT direct to NP 3000

NP DME DIST	10	9	8	7	6	5	4	3	2	MAPt
Advisory Altitude 5%	2950	2650	2350	2050	1750	1450	1150	850	MDA	MDA
Category	A		B			C		D		
VOR/DME	530(441) – 1600					530(441) – 2400			NA	
Circling	600(503) – 2000		660(563) – 2800			* 960(863) – 4800				

* CAT C circling airspace containment south of NZNP not assured.

Effective: 9 NOV 17

Changes from 12 NOV 15: Airspace containment CAT C circling text, NP hold MAX IAS added, 10 NP DME arc radial update.

ELEV 97

CAT A,B,C

NEW PLYMOUTH

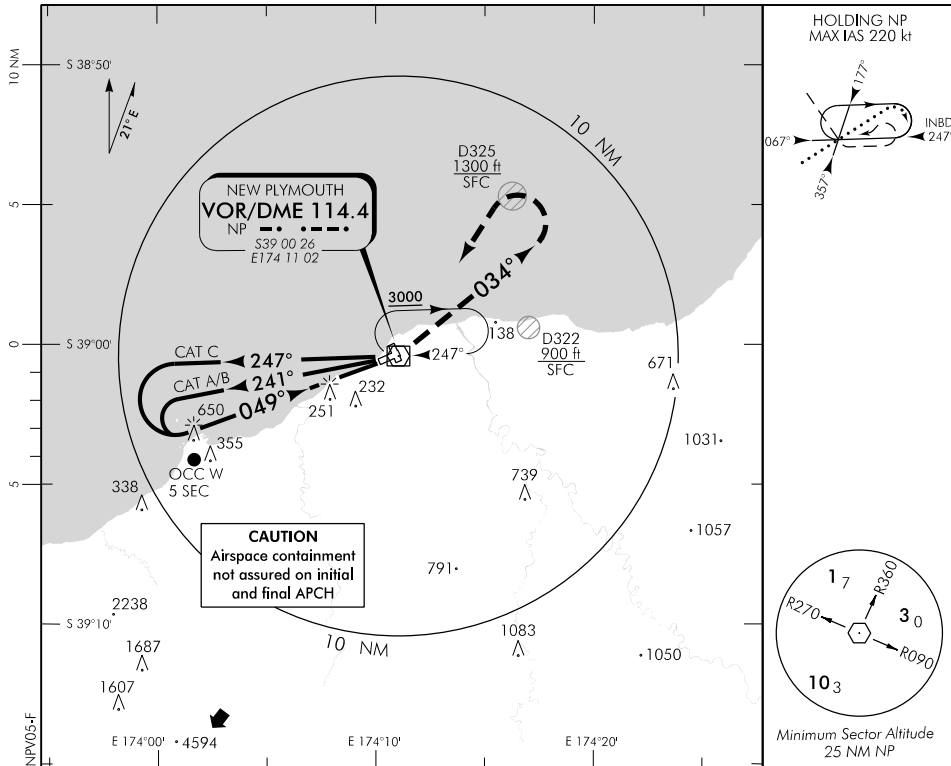
RWY 05 THR ELEV 89

VOR RWY 05

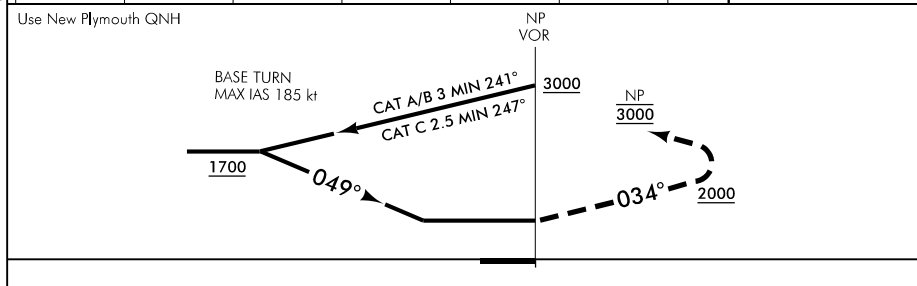
TOWER: 124.7 125.4

ATIS: 127.05

UNATTENDED: 124.7



Changes from 12 NOV 15: Airspace containment and caution box, NP hold MAX IAS added.



MISSED APCH: Track 034° to 2000, turn LEFT direct to NP 3000

Category	A	B	C	D
VOR	930(841) - 3000		930(841) - 4800	NA
Circling	930(833) - 3000		* 960(863) - 4800	

* CAT C circling airspace containment south of NZNP not assured.

Effective: 9 NOV 17