

ELEV 97

CAT A,B,C

NEW PLYMOUTH

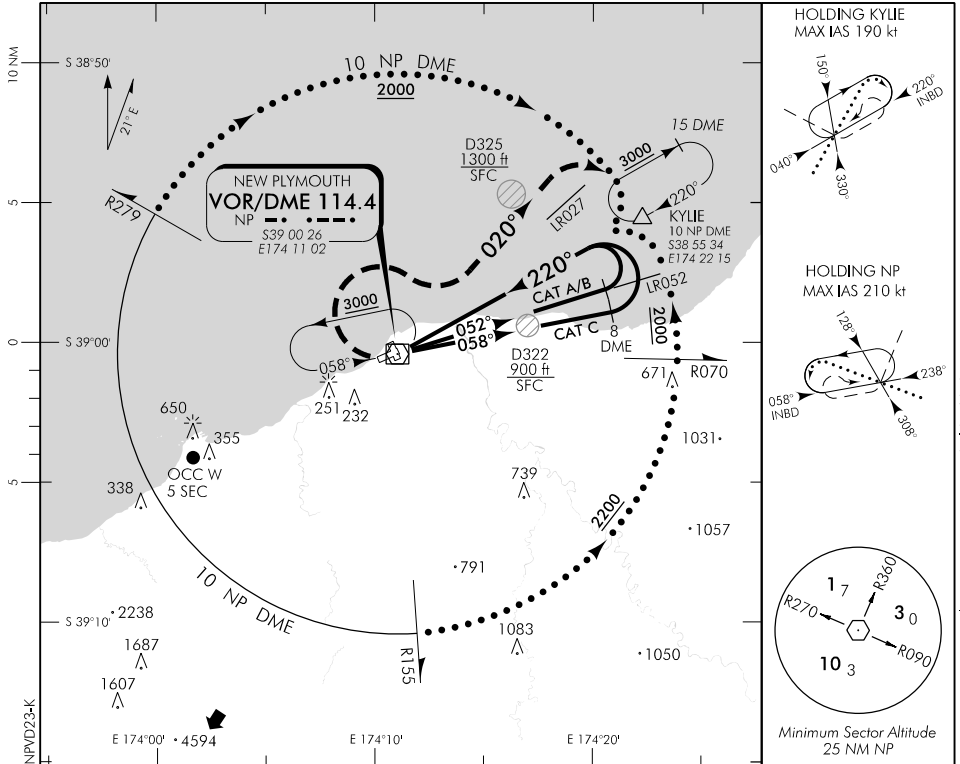
RWY 23 THR ELEV 82

VOR/DME RWY 23

TOWER: 124.7 125.4

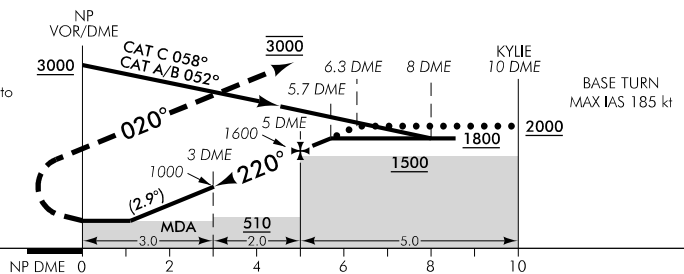
ATIS: 127.05

UNATTENDED: 124.7



Use New Plymouth QNH

HLDG ACFT may descend to **2000** when established INBD for initial APCH.



MISSED APCH: Turn RIGHT track 020°, join 10 DME arc to KYLIE **3000**

NP DME DIST	MAPt	1.1	2	3	4	5	6	7	8	9	10
Advisory Altitude 5%	MDA	MDA	700	1000	1300	1600	1900	2200	2500	2800	3100
Category		A			B			C		D	
VOR/DME		450(368) – 1600				450(368) – 2000				NA	
Circling		600(503) – 2000			660(563) – 2800			* 960(863) – 4800			

* CAT C circling airspace containment south of NZNP not assured.

Effective: 9 NOV 17

Changes from 12 NOV 15: Airspace containment CAT C circling text, MAX IAS KYLIE hold added.

ELEV 97

CAT A,B,C

NEW PLYMOUTH

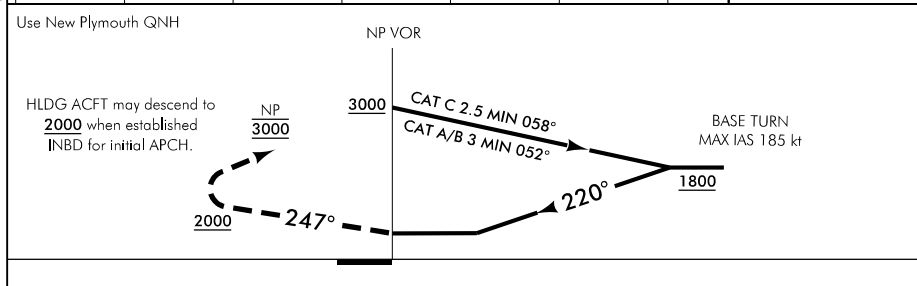
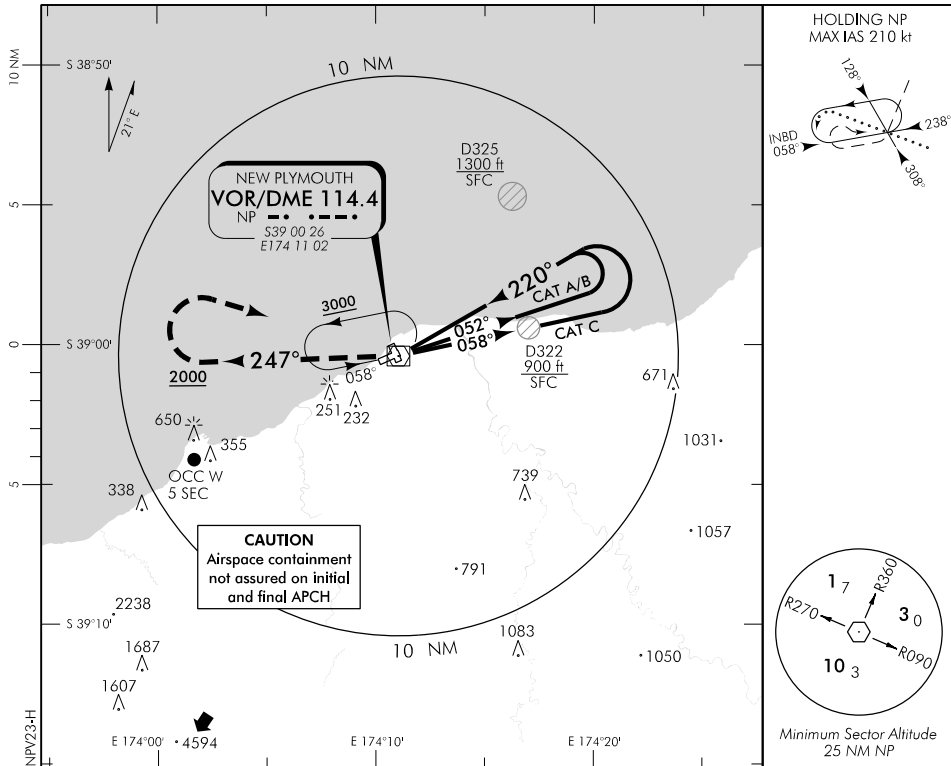
RWY 23 THR ELEV 82

VOR RWY 23

TOWER: 124.7 125.4

ATIS: 127.05

UNATTENDED: 124.7



MISSED APCH: Track 247° to **2000**, turn RIGHT direct to NP **3000**

Category	A	B	C	D
VOR	560 (478) – 2000		560 (478) – 2800	NA
Circling	600 (503) – 2000	660 (563) – 2800	* 960 (863) – 4800	

* Cat C circling airspace containment south of NZNP not assured.

Changes from 12 NOV 15: Airspace containment and caution box added.