

ELEV 97

CAT A,B,C

# NEW PLYMOUTH

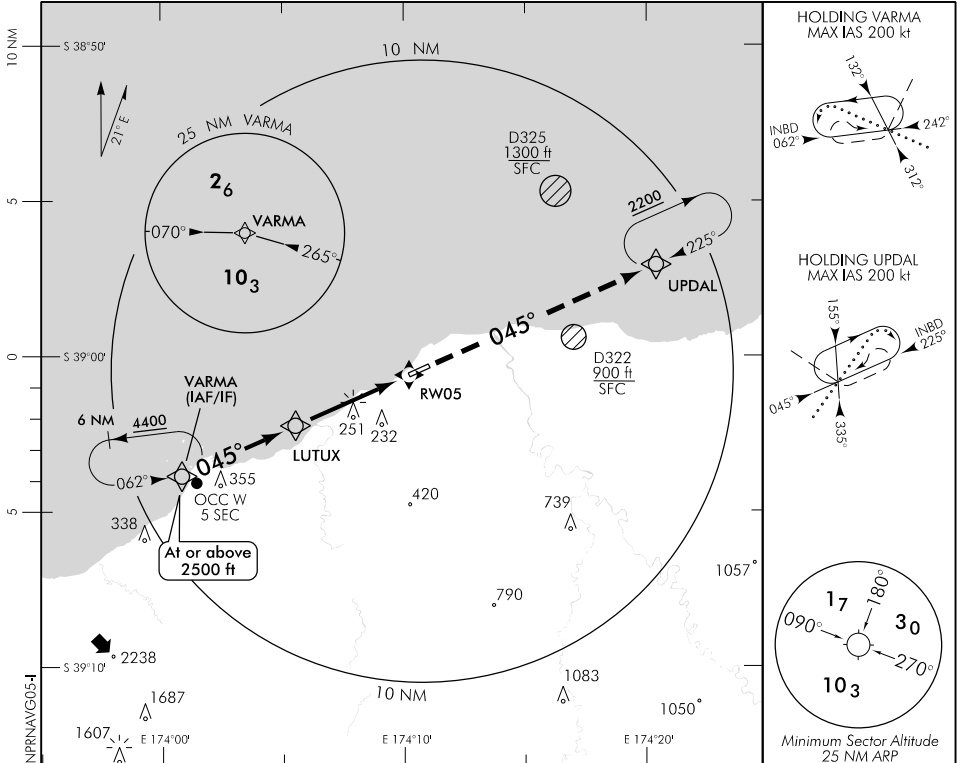
RWY 05 THR ELEV 89

## RNAV (GNSS) RWY 05

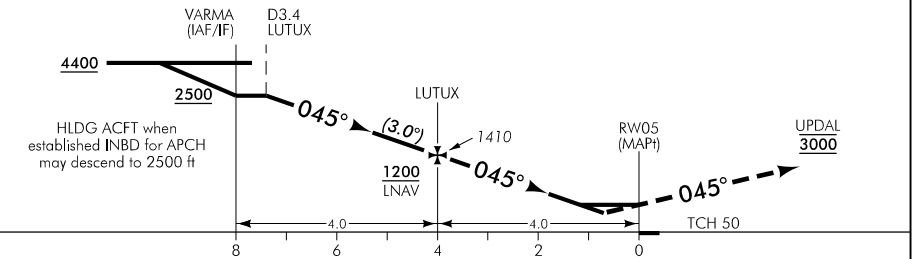
TOWER: 124.7 125.4

ATIS: 127.05

UNATTENDED: 124.7



Use New Plymouth QNH



MISSED APCH: Track 045° to UPDAL 3000

DISTANCE to WPT	VARMA	3	2	1	LUTUX	3	2	1.1	0.7	RW05
Advisory Altitude 3°	2690	2370	2050	1730	1410	1090	780	MDA	MDA/DA	MDA
Category	A			B		C		D		
LNAV/VNAV*	340(251) - 1600					350(261) - 2400			NA	
LNAV	500(411) - 1600					500(411) - 2400			NA	
Circling	600(503) - 2000		660(563) - 2800			# 960(863) - 4800				

\* Valid to AD temperature -5°C. Use of remote QNH NA.  
 # CAT C circling airspace containment south of NZNP not assured.

**Effective: 19 JUL 18**

Changes from 9 NOV 17: Procedure commencement altitude.

ELEV 97

CAT A,B,C

# NEW PLYMOUTH

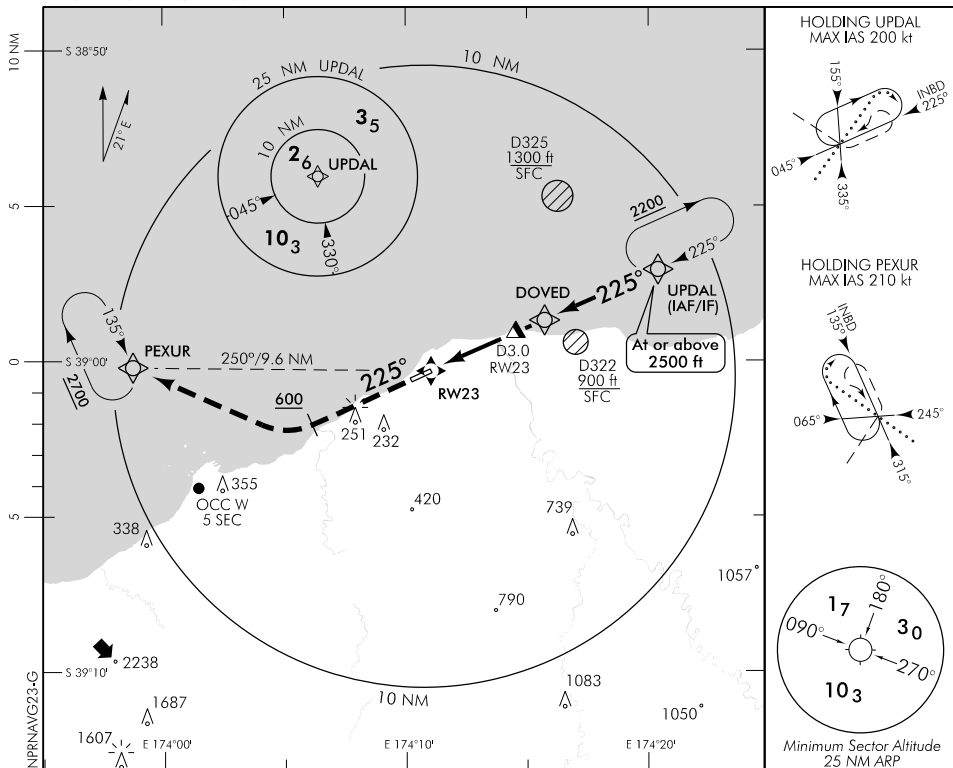
RWY 23 THR ELEV 82

## RNAV (GNSS) RWY 23

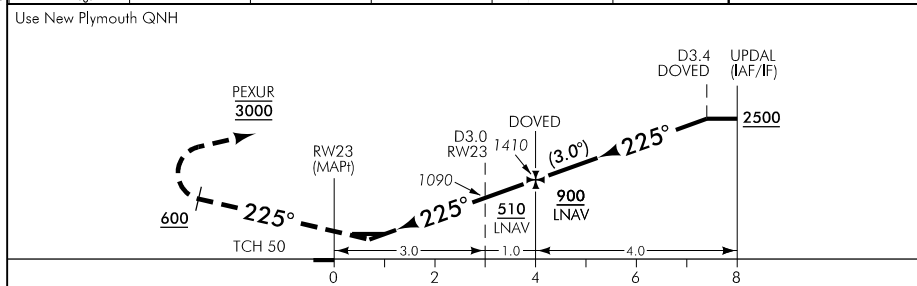
TOWER: 124.7 125.4

ATIS: 127.05

UNATTENDED: 124.7



Changes from 9 NOV 17: Procedure commencement altitude.



**MISSED APCH:** Track 225° to 600, turn RIGHT direct to PEXUR 3000

DISTANCE to WPT	RW23	0.7	1	2	3	DOVED	1	2	3	UPDAL
Advisory Altitude 3°	MDA	MDA/DA	MDA	770	1090	1410	1720	2040	2360	2680
Category	A		B			C			D	
LNAV/VNAV*	350(268) - 1600					360(278) - 2000			NA	
LNAV	450(368) - 1600					450(368) - 2000				
Circling	600(503) - 2000		660(563) - 2800			# 960(863) - 4800				

\* Valid to AD temperature -5°C. Use of remote QNH NA.  
 # CAT C circling airspace containment south of NZNP not assured.

**Effective: 19 JUL 18**