

ELEV 97

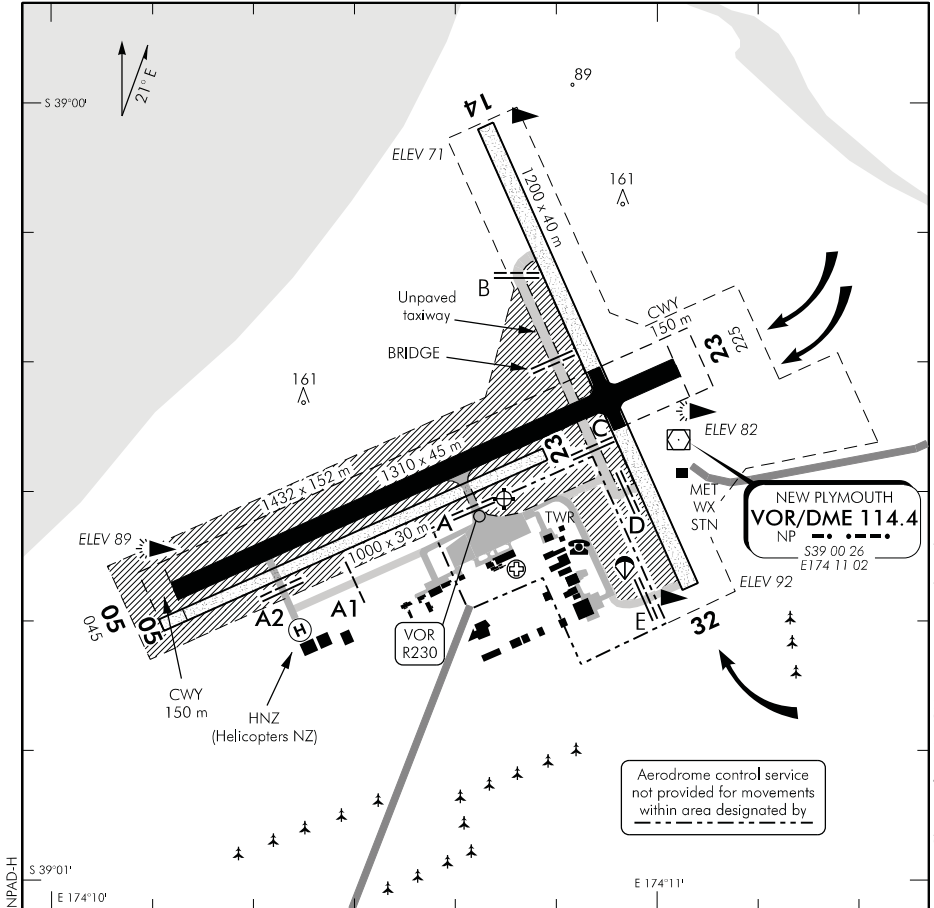
NZNP

TOWER: 124.7 125.4

ATIS: 127.05

UNATTENDED: 124.7

NEW PLYMOUTH AERODROME (1)



1. Runway holding positions A1-E on grass taxiways are marked by yellow wingbars.
2. Circuit: RWY 05, 14 Gr RWY 05 — Left hand RWY 23, 32 Gr RWY 23 — Right hand
When ATC is on watch, unless otherwise instructed, circuit altitude is 1100 ft AMSL.
3. Simultaneous operations on parallel paved and grass runway prohibited. Without ATC clearance aircraft are not to enter the grass runway while an aircraft is taking off or landing on the parallel paved runway.
4. RWY 14/32 and grass taxiway to RWY 14 available to ACFT up to 3200 kg MCTOW (weight restriction does not apply to helicopters on air taxi). Soft when wet.
5. Aircraft using RWY 14/32 should keep on seal when crossing the intersection, due to high grass shoulders and adjacent ground depressions.
6. **CAUTION:**
 - Due to obstructions and runway surface gradients, difficulty can be experienced in observing other aerodrome traffic while manoeuvring on the ground and during take-off.
 - Bird hazard. Gulls occasionally on runway at dusk. Large flocks of birds on and in the vicinity of the aerodrome.

(Continued)

S 39 00 31 E 174 10 45

Effective: 29 MAR 18

© Civil Aviation Authority

NEW PLYMOUTH AERODROME (1)

**NEW PLYMOUTH
AERODROME (2)**

7. Start-up clearance is required for all aircraft movements whilst parachuting operations are in progress.
8. Hot refuelling of helicopters on the apron is prohibited.
9. The following applies to aircraft using HNZ (Helicopters NZ) facilities:
 - call HNZ OPS on 133.65. After hours call NP Tower and advise
 - land on designated helipad
 - fuel pump at parking bay 3 to be used (Caution: obstacles in turning bay)
 - aircraft must be shut down if pilot disembarking aircraft