

ELEV 97

CAT A,B,C

NZNP

# NEW PLYMOUTH RNAV (GNSS) SID RWY 23 (5)

TOWER: 124.7 125.4

ATIS: 127.05

UNATTENDED: 124.7

**Navigation requirement: RNP 1**

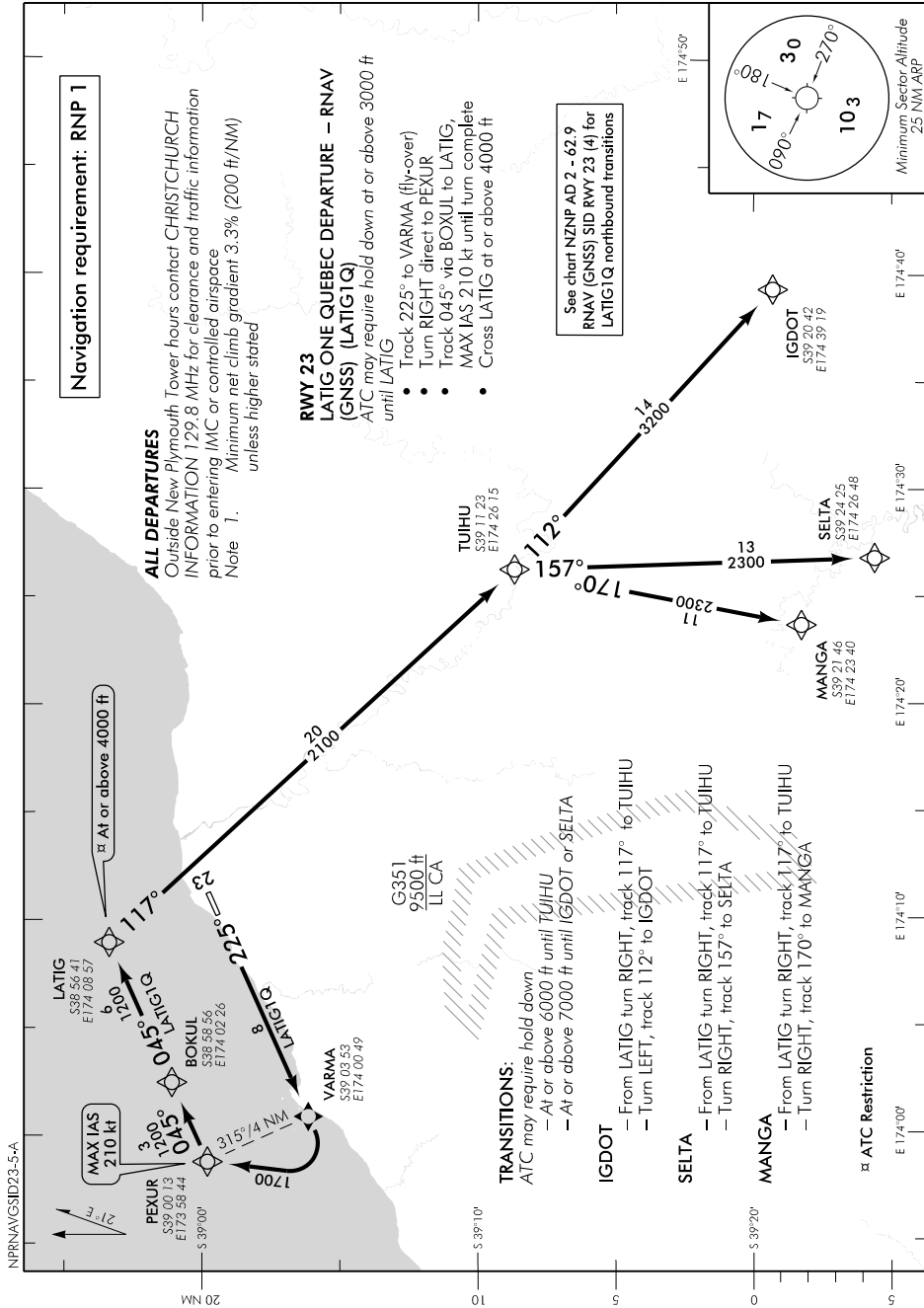
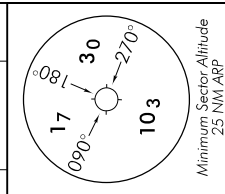
### ALL DEPARTURES

Outside New Plymouth Tower hours contact CHRISTCHURCH INFORMATION 129.8 MHz for clearance and traffic information prior to entering IMC or controlled airspace  
Note 1. Minimum net climb gradient 3.3% (200 ft/NM) unless higher, stated

**RWY 23  
LATIG ONE QUEBEC DEPARTURE – RNAV (GNSS) (LATIG1Q)**  
ATC may require hold down at or above 3000 ft until LATIG

- Track 225° to VARMA (fly-over)
- Turn RIGHT direct to PEXUR
- Track 045° via BOXUL to LATIG, MAX IAS 210 kt until turn complete
- Cross LATIG at or above 4000 ft

See chart NZNP AD 2 - 62.9  
RNAV (GNSS) SID RWY 23 (4) for  
LATIG1Q northbound transitions



Effective: 9 NOV 17

