

ELEV 97

CAT A,B,C

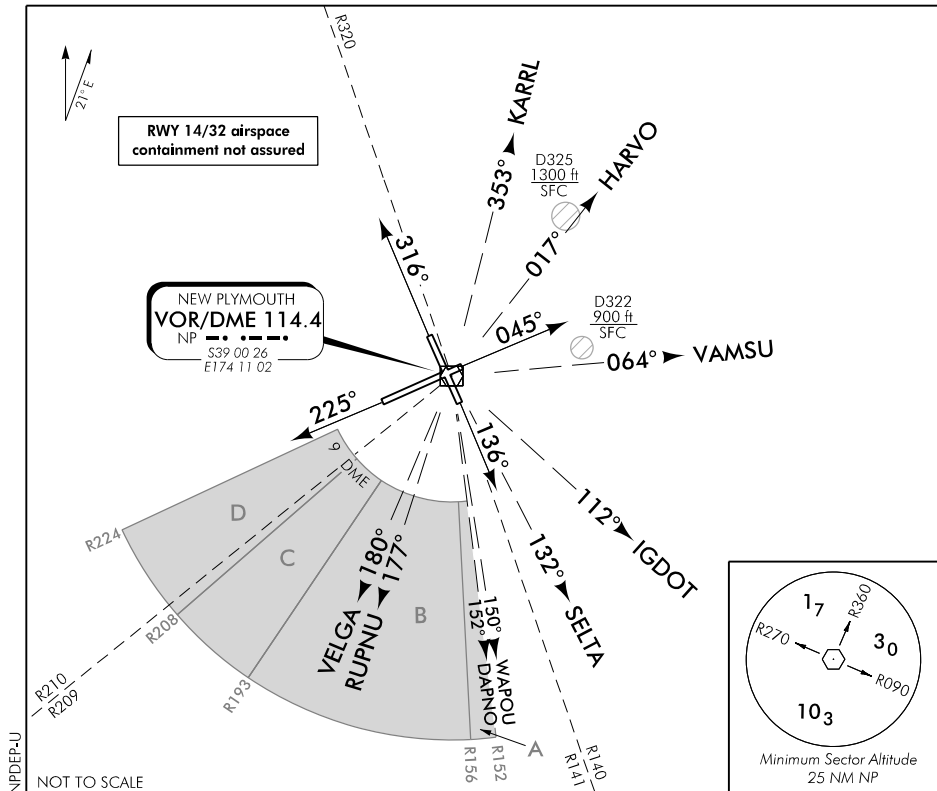
**NEW PLYMOUTH
DEPARTURES**

NZNP

TOWER: 124.7 125.4

ATIS: 127.05

UNATTENDED: 124.7



ALL DEPARTURES

Outside New Plymouth Tower hours contact CHRISTCHURCH INFORMATION 129.8 MHz for clearance and traffic information prior to entering IMC or controlled airspace.

- Note
1. Minimum net climb gradient 3.3% (200 ft/NM) unless higher stated. All climb gradients stated apply from take-off.
 2. Aircraft must be established on an evaluated track within 25 NP DME.
 3. ATC may require hold-down on NP-DAPNO and NP-WAPOU tracks at 5000 ft until passing 8 NP DME or 6000 ft until passing 12 NP DME.

NEW PLYMOUTH ONE DEPARTURE – (NP1)

MNM net climb gradient in the following sectors:

- A. Sector between R152-R156 NP VOR beyond 9 DME, MNM net climb gradient 4.2% (260 ft/NM) to 4700 ft.
- B. Sector between R156-R193 NP VOR beyond 9 DME, MNM net climb gradient 11.5% (700 ft/NM) to 10,200 ft.
- C. Sector between R193-R208 NP VOR beyond 9 DME, MNM net climb gradient 8.2% (500 ft/NM) to 6300 ft.
- D. Sector between R208-R224 NP VOR beyond 9 DME, MNM net climb gradient 4.1% (250 ft/NM) to 3000 ft.

RWY 14/32

- At MNM 500 ft, turn to intercept track

RWY 05/23

- At MNM 1100 ft, turn to intercept track

Airspace containment

- RWY 05 – For airspace containment between R320 clockwise to R140 NP VOR, MNM net climb gradient 5.6% (340 ft/NM) to 3000 ft.
- RWY 23 – For airspace containment between R320 clockwise to R140 NP VOR, MNM net climb gradient 6.1% (370 ft/NM) to 5000 ft.
- RWY 05/23 – Airspace containment between R141 clockwise to R209 NP VOR not assured.
- RWY 05/23 – Airspace containment between R210 clockwise to R320 NP VOR not assured outside 21.5 DME. MAX distance 15 NP DME on ATC-issued diversionary climb radial ensures airspace containment including subsequent turn to intercept track.
- RWY 05 – MNM net climb gradient 5.9% (360 ft/NM) to 3000 ft.
- RWY 23 – MNM net climb gradient 6.1% (370 ft/NM) to 3000 ft.

Effective: 29 MAR 18

Changes from 9 NOV 17: NP1 DEP and airspace containment text added, chart title.

ELEV 97

CAT A,B,C

NEW PLYMOUTH

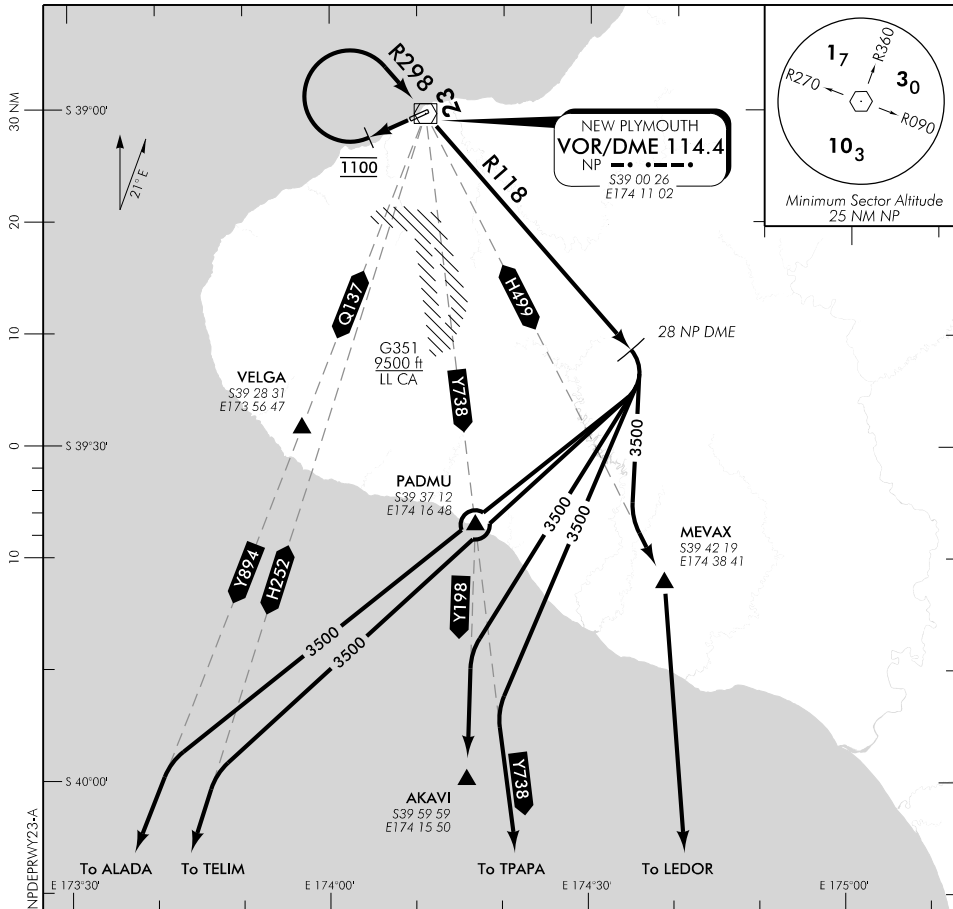
NZNP

DEPARTURES RWY 23

TOWER: 124.7 125.4

ATIS: 127.05

UNATTENDED: 124.7



ALL DEPARTURES

Outside New Plymouth Tower hours contact CHRISTCHURCH INFORMATION 129.8 MHz for clearance and traffic information prior to entering IMC or controlled airspace.

Note: 1. Minimum net climb gradient 3.3% (200 ft/NM) unless higher stated

RWY 23

SOUTH FOUR DEPARTURE – (SOUTH4)

To H252, H499, Y198, Y738 and Y894

- Maintain RWY CL to 1100 ft
- Turn RIGHT, track R298 to NP VOR
- Track R118 to 28 NP DME
- Turn RIGHT, intercept track

Effective: 29 MAR 18