

ELEV 97

CAT A,B,C

**NEW PLYMOUTH**

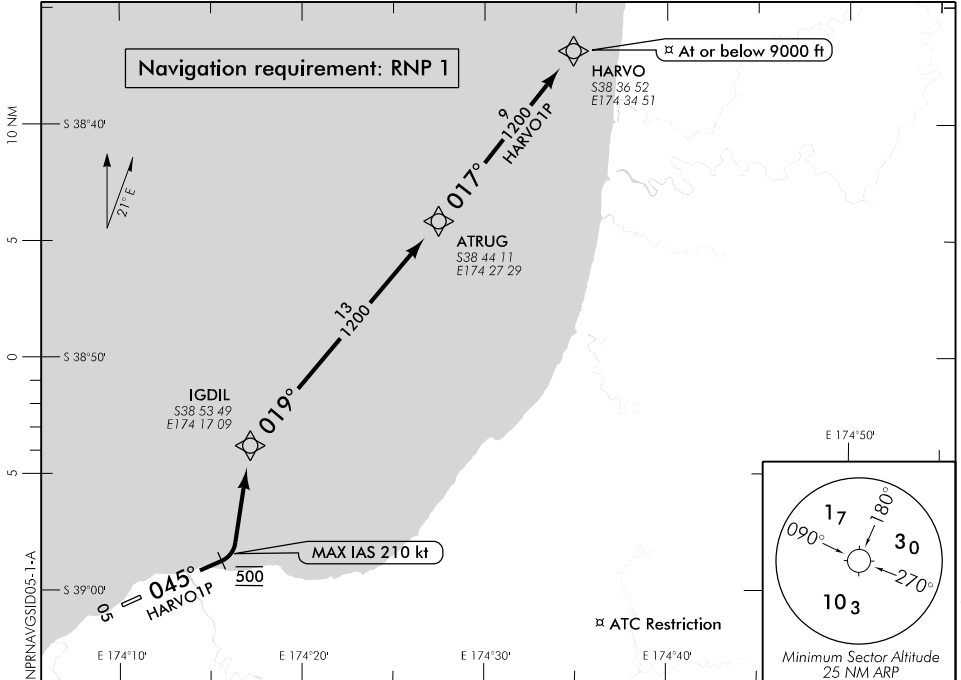
NZNP

**RNAV (GNSS) SID RWY 05 (1)**

TOWER: 124.7 125.4

ATIS: 127.05

UNATTENDED: 124.7



**ALL DEPARTURES**

Outside New Plymouth Tower hours contact CHRISTCHURCH INFORMATION 129.8 MHz for clearance and traffic information prior to entering IMC or controlled airspace

Note 1. Minimum net climb gradient 3.3% (200 ft/NM) unless higher stated

**RWY 05**

**HARVO ONE PAPA DEPARTURE – RNAV (GNSS) (HARVO1P)**

ATC may require hold down

- At or above 3000 ft until IGDIL
- At or above 6000 ft until ATRUG
- At or above 7000 ft until HARVO

- Maintain RWY CL to 500 ft
- Mandatory LEFT turn at 500 ft, direct to IGDIL, MAX IAS 210 kt until turn complete
- Turn RIGHT, track 019° to ATRUG
- Turn LEFT, track 017° to HARVO
- Cross HARVO at or below 9000 ft

**Effective: 9 NOV 17**

ELEV 97

CAT A,B,C

# NEW PLYMOUTH

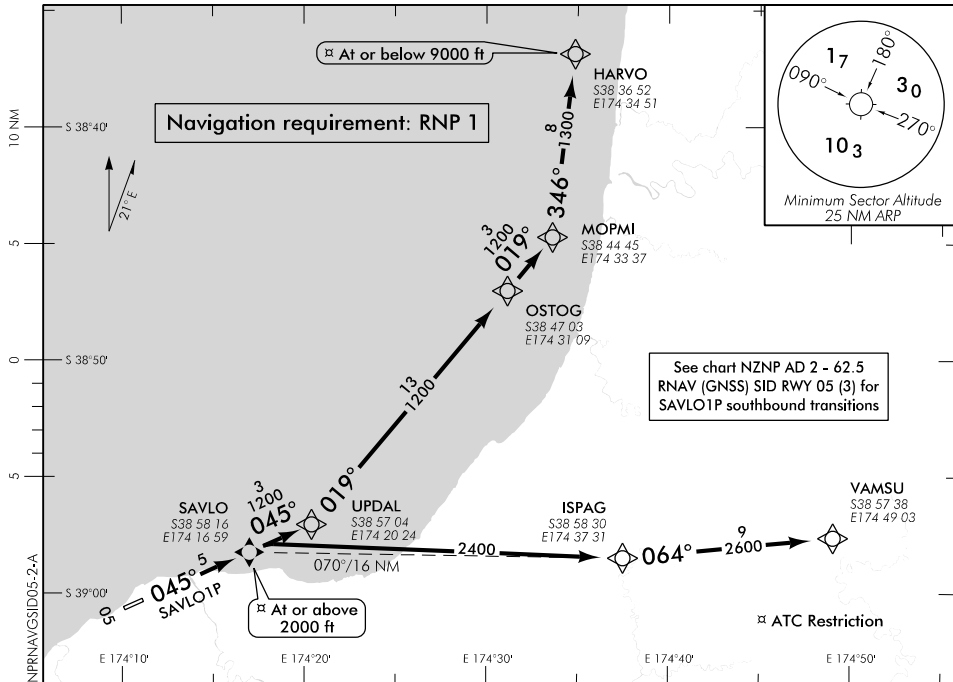
NZNP

**RNAV (GNSS) SID RWY 05 (2)**

TOWER: 124.7 125.4

ATIS: 127.05

UNATTENDED: 124.7



**ALL DEPARTURES**

Outside New Plymouth Tower hours contact CHRISTCHURCH INFORMATION 129.8 MHz for clearance and traffic information prior to entering IMC or controlled airspace

Note 1. Minimum net climb gradient 3.3% (200 ft/NM) unless higher stated

**SAVLO ONE PAPA DEPARTURE – RNAV (GNSS) (SAVLO1P)**

Minimum net climb gradient 6.3% (380 ft/NM) to 2000 ft – if unable to comply advise Tower prior to start-up

- Track 045° to SAVLO (fly-over)
- Cross SAVLO at or above 2000 ft

**TRANSITIONS:**

ATC may require hold down

- At or above 3000 ft until UPDAL
- At or above 6000 ft until OSTOG
- At or above 7000 ft until HARVO or VAMSU

**HARVO**

- From SAVLO track 045° to UPDAL
- Turn LEFT, track 019° via OSTOG to MOPMI
- Turn LEFT, track 346° to HARVO
- Cross HARVO at or below 9000 ft

**VAMSU**

- From SAVLO turn RIGHT direct to ISPAG
- Turn LEFT, track 064° to VAMSU

**Effective: 9 NOV 17**