

ELEV 97

CAT A,B,C

NEW PLYMOUTH

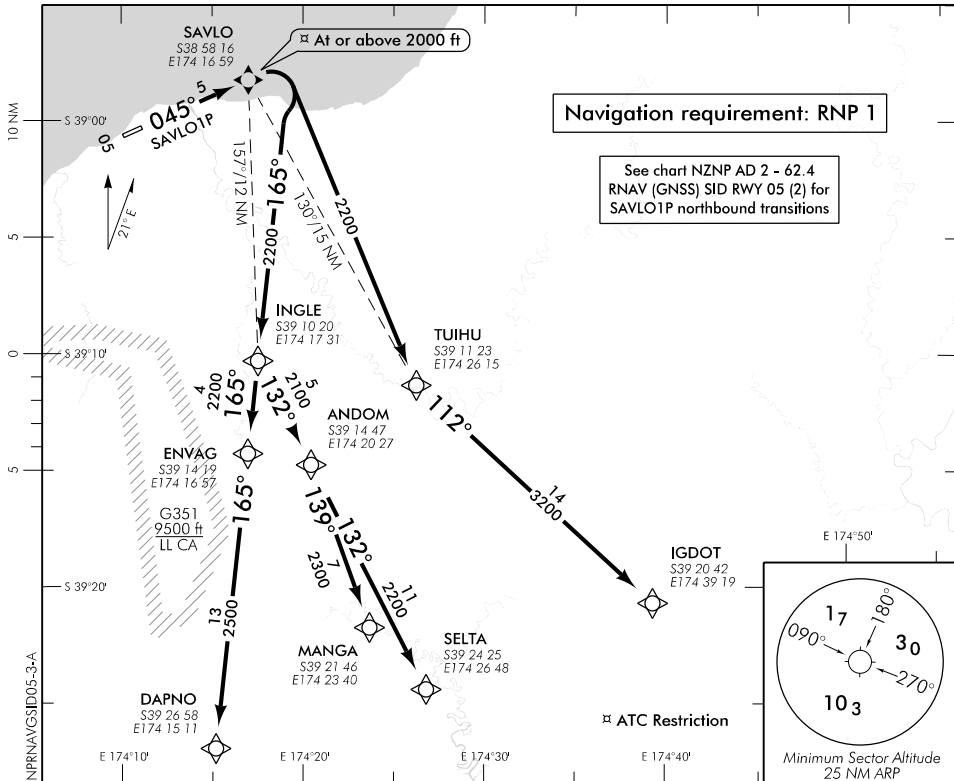
NZNP

RNAV (GNSS) SID RWY 05 (3)

TOWER: 124.7 125.4

ATIS: 127.05

UNATTENDED: 124.7



ALL DEPARTURES

Outside New Plymouth Tower hours contact CHRISTCHURCH INFORMATION 129.8 MHz for clearance and traffic information prior to entering IMC or controlled airspace

Note 1. Minimum net climb gradient 3.3% (200 ft/NM) unless higher stated

SAVLO ONE PAPA DEPARTURE – RNAV (GNSS) (SAVLO1P)

Minimum net climb gradient 6.3% (380 ft/NM) to 2000 ft – if unable to comply advise Tower prior to start-up

- Track 045° to SAVLO (fly-over)
- Cross SAVLO at or above 2000 ft

TRANSITIONS:

ATC may require hold down

- At or above 6000 ft until TUIHU, ANDOM or ENVAG
- At or above 7000 ft until IGDOT, SELTA or MANGA
- At or above 10,000 ft until DAPNO

MANGA

- From SAVLO turn RIGHT, track 165° to INGLE
- Turn LEFT, track 132° to ANDOM
- Turn RIGHT, track 139° to MANGA

DAPNO

- From SAVLO turn RIGHT, track 165° via INGLE and ENVAG to DAPNO

IGDOT

- From SAVLO turn RIGHT direct to TUIHU
- Turn LEFT, track 112° to IGDOT

SELTA

- From SAVLO turn RIGHT, track 165° to INGLE
- Turn LEFT, track 132° via ANDOM to SELTA

Effective: 9 NOV 17

