

ELEV 97

CAT A,B,C

NEW PLYMOUTH

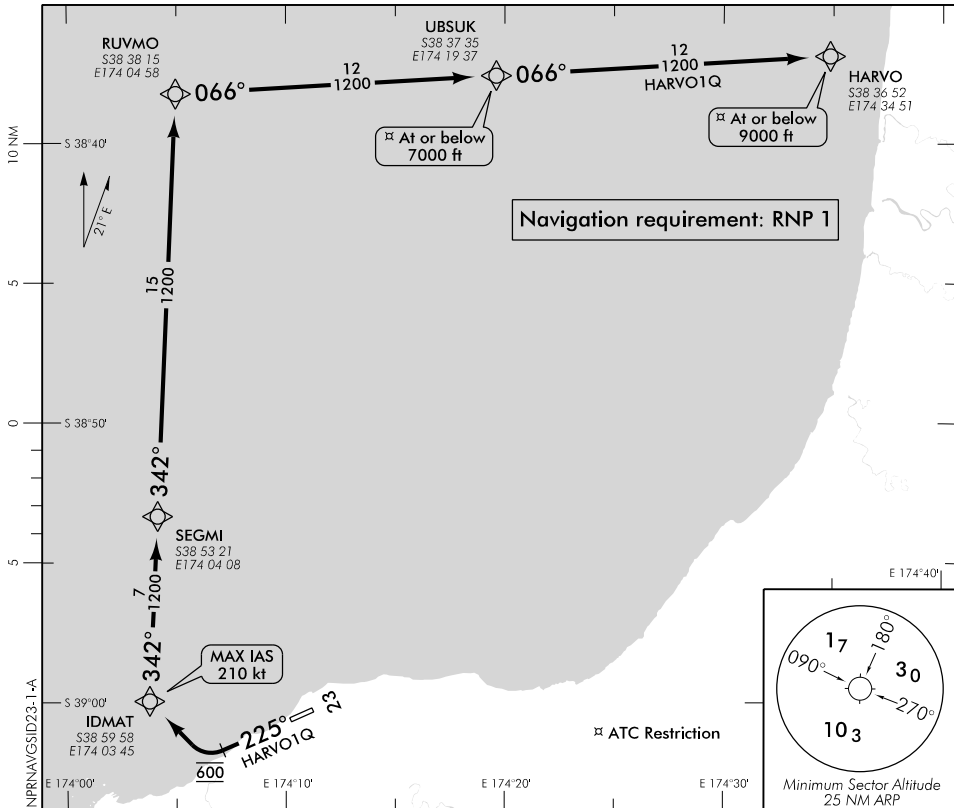
NZNP

RNAV (GNSS) SID RWY 23 (1)

TOWER: 124.7 125.4

ATIS: 127.05

UNATTENDED: 124.7



ALL DEPARTURES

Outside New Plymouth Tower hours contact CHRISTCHURCH INFORMATION 129.8 MHz for clearance and traffic information prior to entering IMC or controlled airspace
 Note 1. Minimum net climb gradient 3.3% (200 ft/NM) unless higher stated

RWY 23

HARVO ONE QUEBEC DEPARTURE – RNAV (GNSS) (HARVO1Q)

ATC may require hold down

- At or above 3000 ft until SEGMI
- At or above 7000 ft until HARVO

ATC may instruct aircraft to turn RIGHT at or above 600 ft direct to HARVO

- Maintain RWY CL to 600 ft
- Mandatory RIGHT turn at 600 ft, direct to IDMAT
- Turn RIGHT, track 342° via SEGMI to RUVMO, MAX IAS 210 kt until turn complete
- Turn RIGHT, track 066° via UBSUK to HARVO
- Cross UBSUK at or below 7000 ft
- Cross HARVO at or below 9000 ft

Effective: 9 NOV 17

ELEV 97

CAT A,B,C

NZNP

NEW PLYMOUTH RNAV (GNSS) SID RWY 23 (2)

TOWER: 124.7 125.4

ATIS: 127.05

UNATTENDED: 124.7

NPRNAVGSID23-2-A

ALL DEPARTURES

Outside New Plymouth Tower hours contact CHRISTCHURCH INFORMATION 129.8 MHz for clearance and traffic information prior to entering IMC or controlled airspace
 Note 1. Minimum net climb gradient 3.3% (200 ft/NM) unless higher stated

RWY 23

GUSUR ONE QUEBEC DEPARTURE – RNAV (GNSS) (GUSUR1Q)

Minimum net climb gradient 6.3% (380 ft/NM) to 2000 ft – if unable to comply advise Tower prior to start-up

- Track 225° to GUSUR (fly-over)
- Cross GUSUR at or above 2000 ft

TRANSITIONS:

ATC may require hold down at or above 7000 ft until HARVO or VAMSU

HARVO

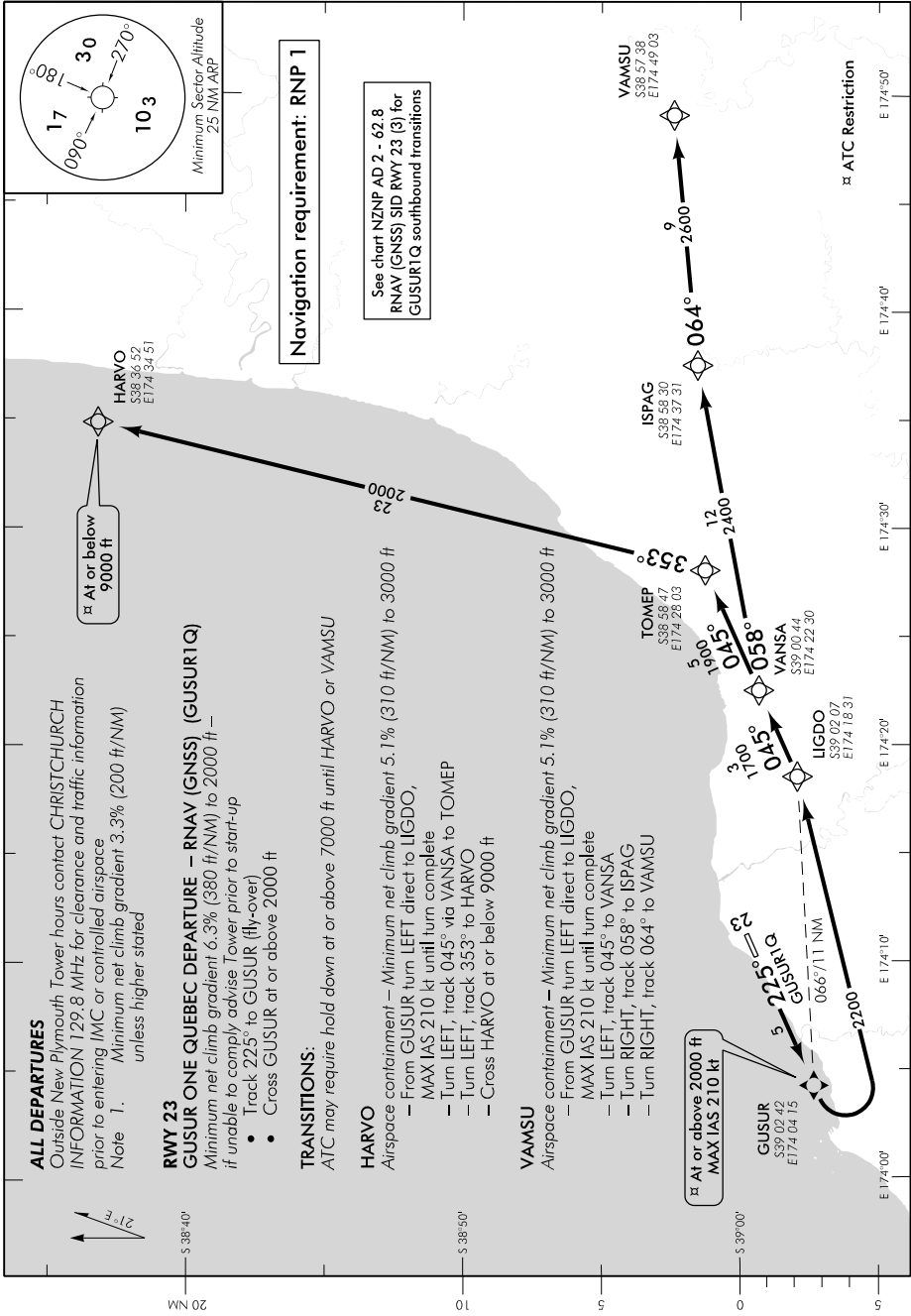
Airspace containment – Minimum net climb gradient 5.1% (310 ft/NM) to 3000 ft

- From GUSUR turn LEFT direct to LIGDO, MAX IAS 210 kt until turn complete
- Turn LEFT, track 045° via VANSA to TOMEP
- Turn LEFT, track 353° to HARVO
- Cross HARVO at or below 9000 ft

VAMSU

Airspace containment – Minimum net climb gradient 5.1% (310 ft/NM) to 3000 ft

- From GUSUR turn LEFT direct to LIGDO, MAX IAS 210 kt until turn complete
- Turn LEFT, track 045° to VANSA
- Turn RIGHT, track 058° to ISPAG
- Turn RIGHT, track 064° to VAMSU



New chart.