

ELEV 17

NZNS

TOWER: 127.4

DELIVERY: 123.3

ATIS: 129.1

UNATTENDED: 127.4

NELSON**ARRIVAL/DEPARTURE*****Instrument Training Operations***

Due to traffic congestion at times, all instrument training operations must be pre-coordinated by telephone with the Nelson ATC duty controller. Training operations may be subject to delay at times, particularly for VOR procedures (refer ENR 1.1-10.3).

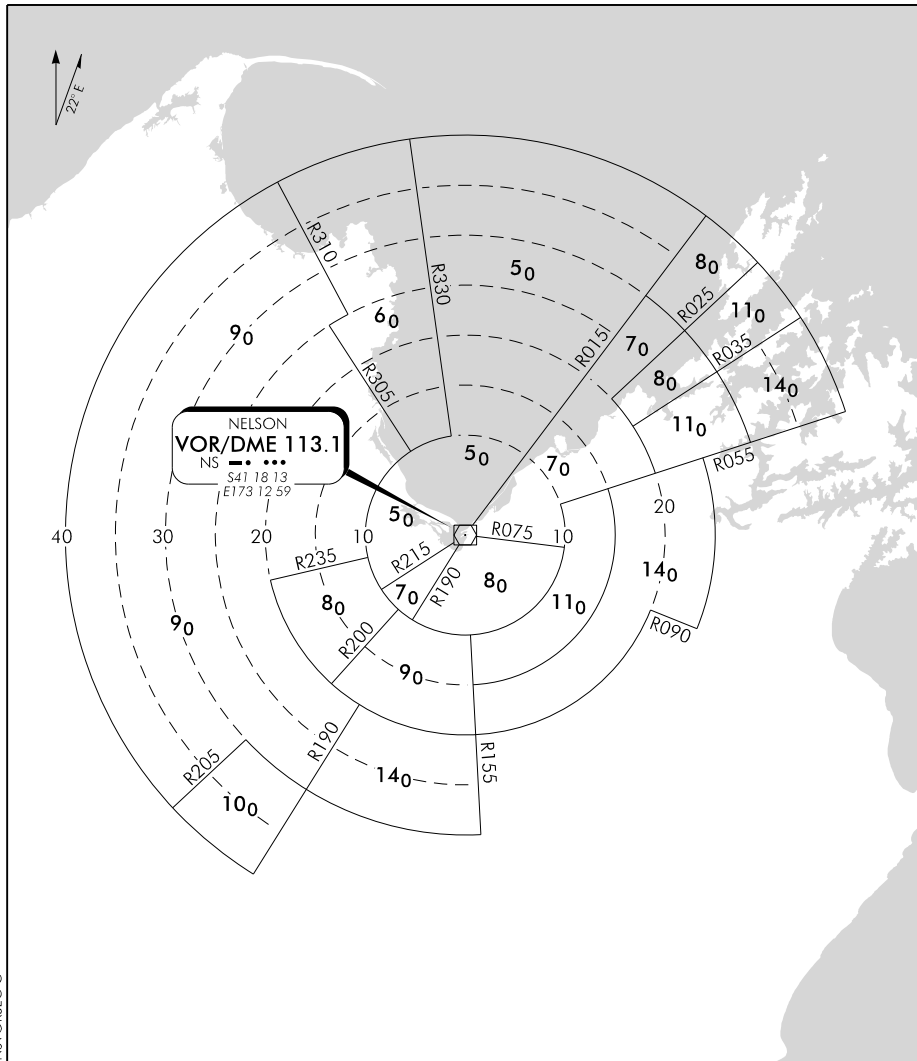
Arrival Procedures

- Aircraft inbound on H133, when cleared for VOR/DME ALFA approach, shall, upon reaching NS VOR, turn right and proceed outbound R337. In this instance the procedure may be commenced not below 5700 ft at NS VOR.
- Aircraft inbound on H133, when cleared for the VOR/DME CHARLIE approach, shall, upon reaching NS VOR, turn left and proceed outbound R235. In this instance the procedure may be commenced not below 5700 ft at NS VOR.
- Aircraft inbound on H240 or Q438 (from IGUTA) or H252 when within 35 NS DME may be cleared to intercept R360 NS VOR, when established descend as cleared to MNM 4000 ft to ELMAX REP for VOR/DME ALFA approach.

Departure Procedures

Outside Nelson Tower hours contact Christchurch Control 123.7 MHz for clearance and traffic information prior to entering IMC or controlled airspace.

NELSON VOR/DME MRA SECTORS (VORSEC)



Effective: 10 NOV 16