

ELEV 17

CAT A,B,C

NELSON

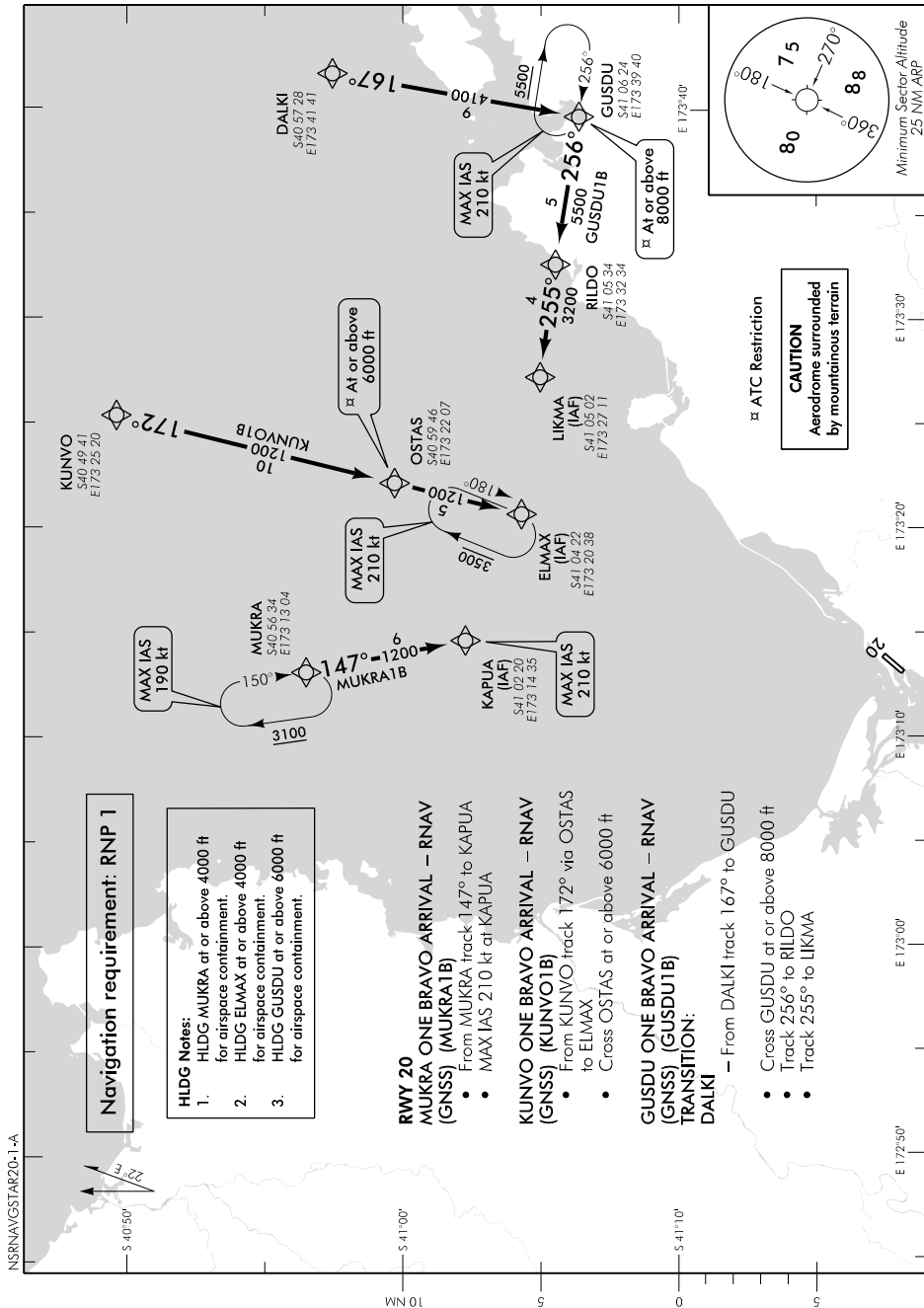
NZNS

RNAV (GNSS) STAR RWY 20 (1)

TOWER: 127.4

ATIS: 129.1

UNATTENDED: 127.4



Effective: 8 NOV 18

© Civil Aviation Authority

NELSON
RNAV (GNSS) STAR RWY 20 (1)

ELEV 17

CAT A,B,C

NELSON

NZNS

RNAV (GNSS) STAR RWY 20 (2)

TOWER: 127.4

ATIS: 129.1

UNATTENDED: 127.4

Navigation requirement: RNP 1

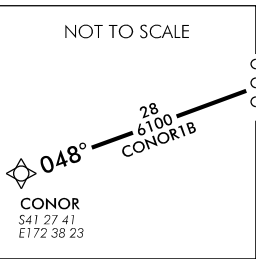
HLDG Note:

- 1. HLDG GUNEL at or above 10,000 ft for airspace containment.

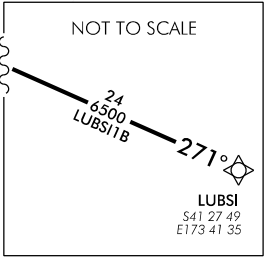
RWY 20 CONOR ONE BRAVO ARRIVAL – RNAV (GNSS) (CONOR1B)

- From CONOR track 048° to NS VOR
- Track 338° via DUGOL to IRNUX
- Cross DUGOL at or above 8000 ft
- Track 002° to KAPUA
- MAX IAS 210 kt at KAPUA

NOT TO SCALE



NOT TO SCALE



GUNEL ONE BRAVO ARRIVAL – RNAV (GNSS) (GUNEL1B)

- From GUNEL track 351° to NS VOR
- Track 338° via DUGOL to IRNUX
- Cross DUGOL at or above 8000 ft
- Track 002° to KAPUA
- MAX IAS 210 kt at KAPUA

⊠ ATC Restriction

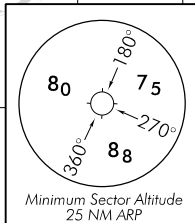
CAUTION
Aerodrome surrounded by mountainous terrain

GUNEL
S41 37 43
E173 06 57



LUBSI ONE BRAVO ARRIVAL – RNAV (GNSS) (LUBSI1B)

- From LUBSI track 271° to NS VOR
- Track 338° via DUGOL to IRNUX
- Cross DUGOL at or above 8000 ft
- Track 002° to KAPUA
- MAX IAS 210 kt at KAPUA



New chart.