

ELEV 17

CAT A,B,C

**NELSON**

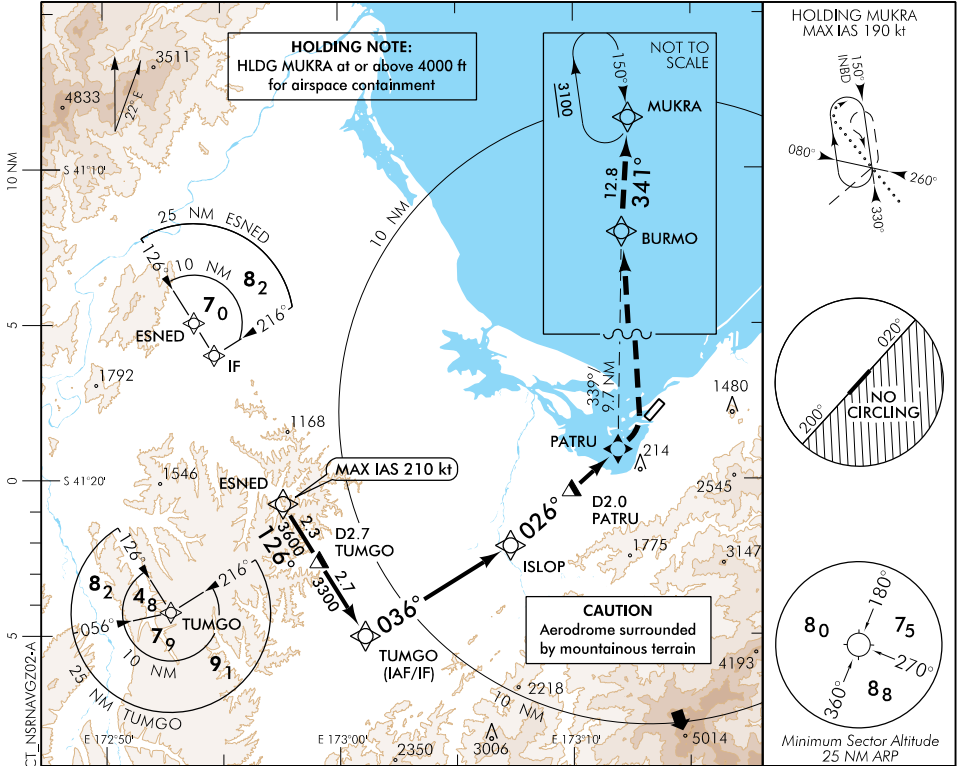
RWY 02 THR ELEV 10

**RNAV (GNSS) Z RWY 02**

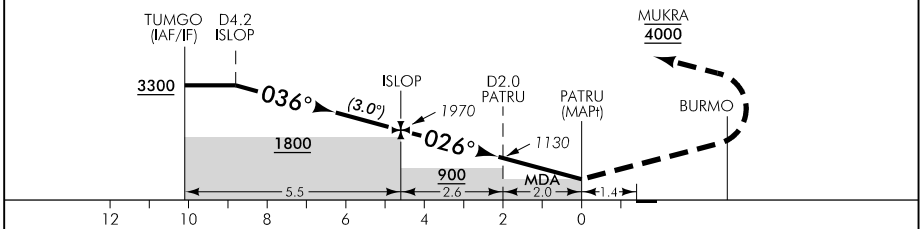
TOWER: 127.4

UNATTENDED: 127.4

ATIS: 129.1



Use Nelson QNH



**MISSED APCH:** Turn LEFT direct to BURMO, track 341° to MUKRA 4000

DISTANCE to WPT	TUMGO	5	4	3	2	1	ISLOP	4	3	2	1	PATRU
Advisory Altitude 5.2%	3720	3560	3240	2920	2600	2290	1970	1760	1450	1130	810	MDA
Category	A			B			C			D		
LNAV	490(473) - 1600						560(543) - 2800			NA		
Circling *	530(513) - 1900			630(613) - 2800			780(763) - 3700			NA		

\* Circling NA east of RWY 02/20

**Effective: 8 NOV 18**

New chart.

ELEV 17

CAT A,B,C

**NELSON**

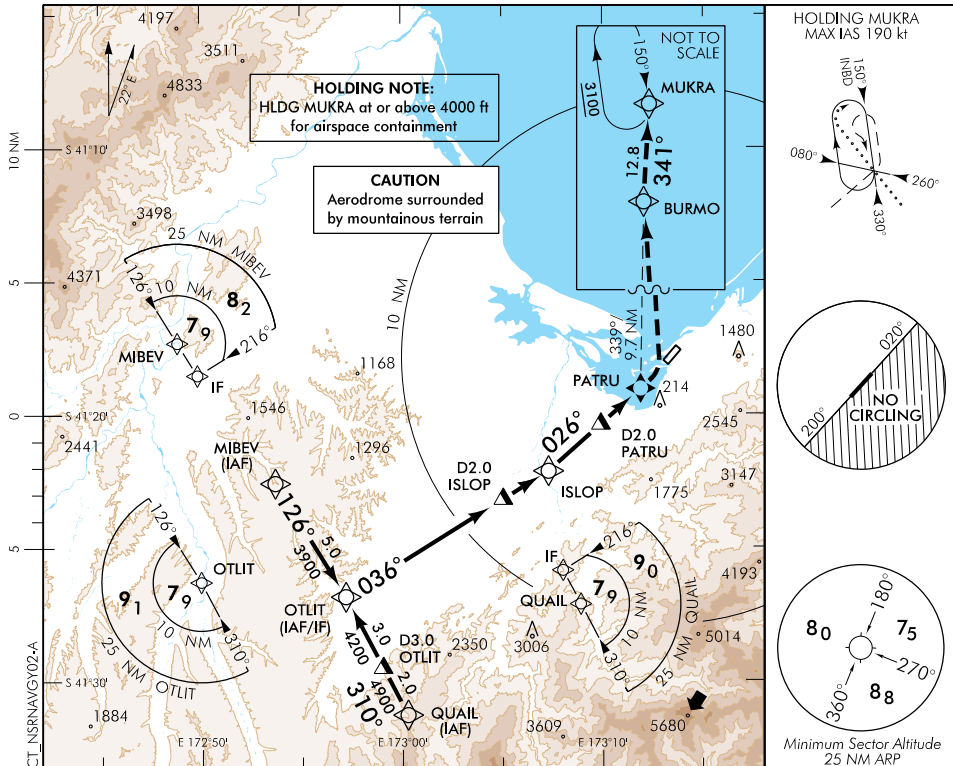
RWY 02 THR ELEV 10

**RNAV (GNSS) Y RWY 02**

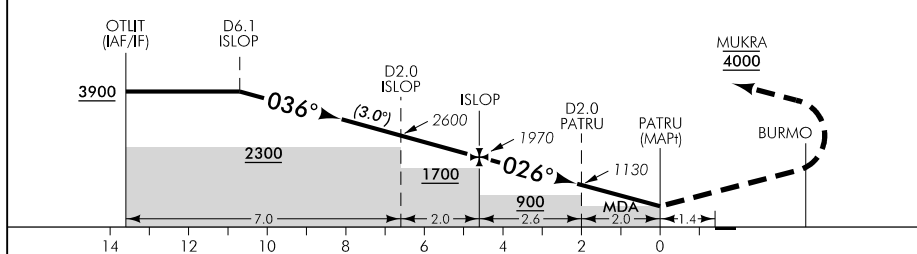
TOWER: 127.4

UNATTENDED: 127.4

ATIS: 129.1



Use Nelson QNH



New chart.

**MISSED APCH:** Turn LEFT direct to BURMO, track 341° to MUKRA 4000

DISTANCE to WPT	OTLIT	8	7	6	5	4	3	2	1	ISLOP	4	3	2	1	PATRU
Advisory Altitude 5.2%	4820	4510	4200	3880	3560	3240	2920	2600	2290	1970	1760	1450	1130	810	MDA
Category	A				B				C				D		
RNAV	490(473) - 1600								560(543) - 2800				NA		
Circling *	530(513) - 1900				630(613) - 2800				780(763) - 3700				NA		

\* Circling NA east of RWY 02/20

**Effective: 8 NOV 18**