

ELEV 17

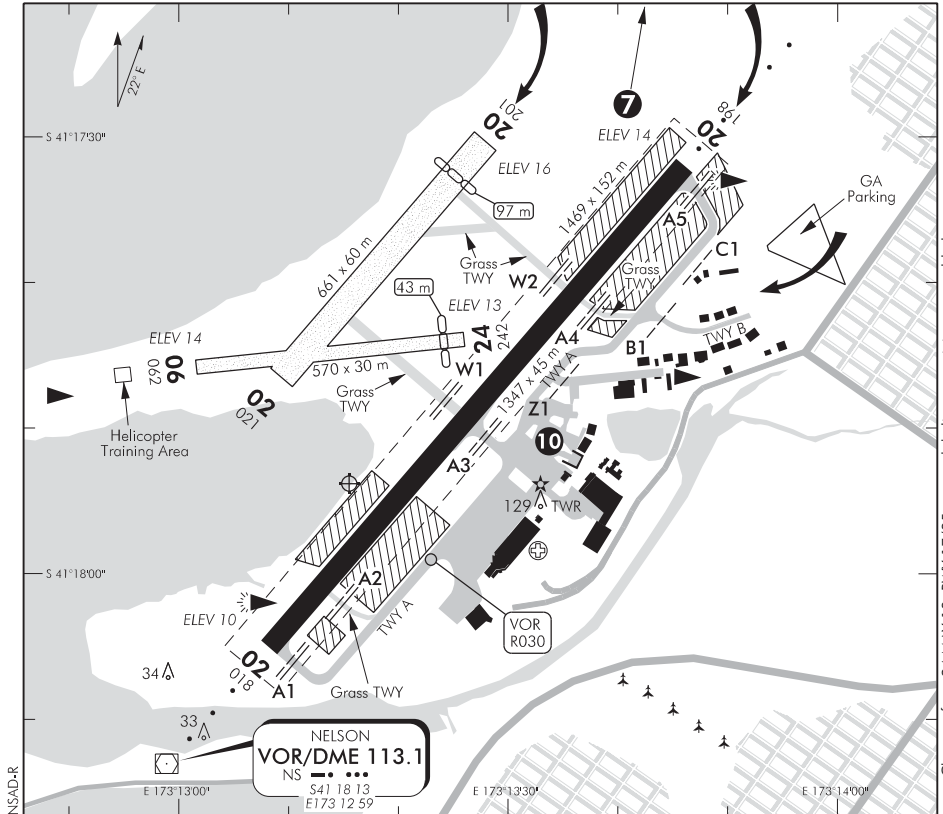
NZNS

TOWER: 127.4

DELIVERY: 123.3

ATIS: 129.1

UNATTENDED: 127.4

NELSON**AERODROME (1)**

1. Circuit: RWY 02, Gr RWY 02, — Left hand
Vector 06 — Left hand
RWY 20, Gr RWY 20 — Right hand
Vector 24 — Right hand
When ATC is on watch, unless otherwise instructed, circuit altitude is 1000 ft AMSL.
Aircraft in the circuit are to remain east of Rabbit Island.
2. Simultaneous operations on parallel paved and grass runways 02/20 permitted.
3. NORDD light aircraft use grass RWY and vectors west and clear of sealed RWY 02/20.
4. **CAUTION:** a) Departures off Vector 06 due to downdraughts in easterly wind conditions and high terrain.
b) Bird hazard. Large numbers of oystercatchers at high tide from mid January to August.
5. Night Circuit training prohibited after 2200 HR local.
6. Use of helicopter training area requires prior approval by local Air Traffic Control.
7. **CAUTION:** Kite surfing may be operating at any time during daylight hours on the western end of Tahunanui Beach (0.8 NM north) up to tree top height 100 ft.
8. Aircraft in excess of 6000 kg must not U-turn on RWY 02/20 except as directed by ATC.
9. All aircraft on the apron must call ATC for authorisation prior to starting.

(continued)

S 41 17 54 E 173 13 16

Effective: 31 JAN 19

© Civil Aviation Authority

NELSON
AERODROME (1)

Changes from 24 MAY 18: RWY 17/35 removed, helicopter training area added.

NELSON
AERODROME (2)

- ⑩ **Flashing orange light NNE of gate 11 indicates possible severe prop-wash. When light is flashing during unattended airport hours aircraft should notify intentions on 127.4 for status of taxiway between A3 and A4.**
- 11. TWY B limited to aircraft with MAUW at or below 7500 kg.
- 12. Rough patches on some grass areas. Aircraft should exercise caution or use paved movement areas.
- 13. All aircraft operations at the aerodrome are subject to the Aeronautical Conditions of Use available at www.nelsonairport.co.nz