

ELEV 17

CAT A,B,C

**NELSON**

NZNS

**DEPARTURE RWY 02**

TOWER: 127.4

DELIVERY: 123.3

ATIS: 129.1

UNATTENDED: 127.4

**Departure procedures**

**Take-off RWY 02**

Minimum net climb gradient 3.3% (200 ft/NM) unless higher stated.

Turn left visually (due terrain to the east of runway centreline).

**CAUTION: Aerodrome surrounded by mountainous terrain**

**RWY 02**

**ZULU ONE DEPARTURE (ZULU1)**

To KUNVO, SNAPA, DALKI, BOLOX, EGUSA, SIMZI, LUBSI, GUNEL, PEAKS, NESTA, ATAPO, CONOR, SKEET

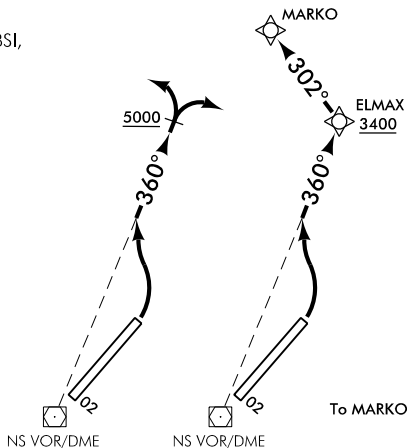
- Turn LEFT, intercept R360
- At MNM 5000 ft turn to intercept track

To SIMZI and LUBSI – ATC may require hold down at 7000 ft until established on or until south of R070

To MARKO

MNM net climb gradient 4.1% (240 ft/NM) to 3400 ft

- Turn LEFT, intercept R360 to ELMAX
- Cross ELMAX at or above 3400 ft
- Track 302° to MARKO



**RWY 02**

**XRAY ONE DEPARTURE (XRAY1)**

Available only if cruise level is 8000 ft or above

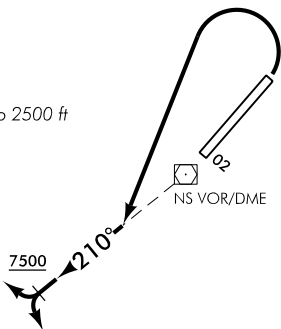
To KUNVO, SNAPA, DALKI, BOLOX, EGUSA, SIMZI, SWEET, LUBSI, GUNEL, PEAKS, NESTA, ATAPO, CONOR, SKEET

Minimum net climb gradient 3.8% (240 ft/NM) to 7500 ft

Airspace containment – MNM net climb gradient 6.0% (370 ft/NM) to 2500 ft

- Turn LEFT, intercept R210
- At MNM 7500 ft turn to intercept track

ATC may require hold down at 6000 ft until 10 NS DME on R210



NSDEP02-E

Changes from 20 JUL 17: RWY 02 ZULU1 and RWY 02 XRAY1 replace all previous RWY 02 departures.

ELEV 17

CAT A,B,C

**NELSON**

NZNS

**DEPARTURE RWY 20**

TOWER: 127.4

DELIVERY: 123.3

ATIS: 129.1

UNATTENDED: 127.4

**Departure Procedures**

**Take-off RWY 20**

Minimum net climb gradient 3.3% (200 ft/NM) unless higher stated.

Minimum turn altitude 500 ft.

**CAUTION: Aerodrome surrounded by mountainous terrain.**

**RWY20**

**XRAY ONE DEPARTURE (XRAY1)**

Available only if cruise level is 8000 ft or above

To KUNVO, SNAPA, DALKI, BOLOX, EGUSA, SIMZI, LUBSI, SWEET, GUNEL, ATAPO

Minimum net climb gradient 4.2% (260 ft/NM) to 7500 ft

Airspace containment – MNM net climb gradient 5.2% (320 ft/NM) to 8000 ft

To CONOR, SKEET

Minimum net climb gradient 4.2% (260 ft/NM) to 7500 ft

Airspace containment – MNM net climb gradient 8.0% (500 ft/NM) to 14,000 ft

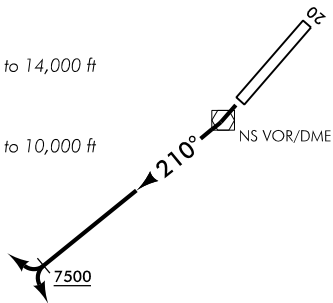
To PEAKS, NESTA

Minimum net climb gradient 4.2% (260 ft/NM) to 7500 ft

Airspace containment – MNM net climb gradient 5.2% (320 ft/NM) to 10,000 ft

- Climb on R210
- At MNM 7500 ft turn to intercept track

ATC may require hold down at 6000 ft until 10 NS DME on R210



**RWY20**

**VICTOR ONE DEPARTURE (VICTOR1)**

To DUMIK, KUNVO, SNAPA, DALKI, BOLOX, EGUSA, SIMZI, LUBSI, SWEET

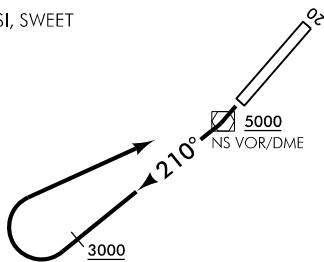
Minimum net climb gradient 4.2% (260 ft/NM) to 7900 ft

- Climb on R210 to MNM 3000 ft
- Turn RIGHT, track to NS VOR
- Cross NS VOR at or above 5000 ft, intercept track

To NS VOR

Minimum net climb gradient 4.2% (260 ft/NM) to 5000 ft

- Climb on R210 to MNM 3000 ft
- Turn RIGHT, track to NS VOR
- Cross NS VOR at or above 5000 ft
- Continue climb in hold to MNM holding altitude



NSDEP20-E

Changes from 20 JUL 17: RWY 20 XRAY1 and RWY 20 VICTOR1 replace all previous RWY 20 departures.